

Investigating what Effects Aviation Fluids Have on the Flatwise Compressive Strength of Nomex[®] Honeycomb Core Material

G. Kim, R. Sterkenburg.

Abstract—One of the disadvantages of honeycomb sandwich structure is that they are prone to fluid intrusion. The purpose of this study is to determine if the structural properties of honeycomb core are affected by contact with a fluid. The test specimens were manufactured of fiberglass prepreg for the facesheets and Nomex[®] honeycomb core for the core material in accordance with ASTM C-365/365M. Test specimens were soaked in several different kinds of fluids, such as aircraft fuel, turbine engine oil, hydraulic fluid, and water for a period of 60 days. A flatwise compressive test was performed, and the test results were analyzed to determine how the contact with aircraft fluids affected the compressive strength of the Nomex[®] honeycomb core and how the strength was recovered when the specimens were dry. In addition, the investigation of de-bonding between facesheet and core material after soaking were performed to support the study.

Keywords—Debonding, environmental degradation, honeycomb sandwich structure.

I. INTRODUCTION

THE use of composite sandwich structures has increased significantly. The main application of composite sandwich structure is in the aerospace industry because a high stiffness-to-weight ratio of a structure is one of the most critical factors during the aircraft design process [1]-[7]. An aircraft design requires the aircraft structure to resist various kinds of loads that are applied to the aircraft structure. One of the most effective ways to stiffen the structure and to resist a deforming force is to use a honeycomb sandwich structure [8]. For this reason, composite sandwich structure is used not only in primary structure of the aircraft, such as wings, fuselage, flaps, rudder, and fairings, but also for engine cowls, nacelles, radomes, floors, doors, and overhead storage bins [1], [2], [9]-[11]. Besides the high strength-to-weight ratio, composite sandwich structure has many other advantages, such as corrosion resistance, design flexibility, fatigue resistance, and high temperature resistance [1], [3], [4], [9], [12]. Because of these advantages, traditional materials such as aluminum and steel have been replaced by composite materials. Sandwich structure can be divided into three different sections; facesheets, core, and adhesive [3], [5], [9]. The facesheet is a thin rigid panel with a relatively high elasticity modulus [3], [13]. A facesheet is usually made out of fiberglass, carbon

fiber, or Kevlar reinforced laminate [3], [5], [13]. The core material is a thick and low density material that provides stiffness normal to the face direction [5], [13]. The most common core materials used are aluminum honeycomb, Nomex[®] honeycomb, and foam core [3], [5], [6], [9], [13]. Nomex[®] honeycomb core is often used in the aerospace and automotive industry [6], [10], [14]. Nomex[®] honeycomb consists of a phenolic resin coated Nomex[®] paper which is made of aramid fiber [6], [10], [12]. The mechanical property of Nomex[®] honeycomb is determined by the material properties and proportion of aramid fiber and phenolic resin of the honeycomb. The bonding strength between the fibers also affects the properties of the Nomex[®] honeycomb core material [10]. Nomex[®] honeycomb has several advantages such as: flammability, dielectric, and it is corrosion resistant with the face material [12].

Honeycomb sandwich structure used in aircraft structures is exposed to various kinds of loads during application, such as impact loading, concentrated loading, and vibration [9], [12]. In addition, composite honeycomb sandwich structure is often used in various environmental conditions during the operational use of the aircraft [2], [9], [11]. In certain conditions, the structure is exposed to fluids such as water, moisture, oil, or solvent [9]. The structural behavior of the sandwich structure under these loads with various environmental factors must be tested and analyzed before the structures are introduced to a real environment [6], [12]. There are many possible ways that fluids can intrude into a honeycomb sandwich structure. Fluid ingresses into the structure through joints, closeouts, and inserts of sandwich structure [11], [15]. Skin damage, such as a crack, can provide an intrusion path for moisture [1], [7], [11], [15], [16]. Possible pathways of moisture ingress are negative gage pressure in the cell caused during the curing process, which draws the moisture into the cell [7]. Even when there is no damage to the skin panel, moisture can diffuse through porosity and micro-cracks that are induced from thermal cycles [7], [15], [16]. When moisture ingresses into a honeycomb structure, the pattern of the infiltration is very random and unpredictable [17]. The speed of moisture infiltration through the honeycomb is very slow. Infiltration to the first row of the core on the exposed side is relatively fast, but after the first row, diffusion rates are significantly slower and inconsistent. Diffusion rates vary with the type of test samples [18]. Moisture absorption is a common behavior for composite materials [2], [3], [14], [19]. Compared to other

G. Kim is with Purdue University, West Lafayette, IN 47907 USA. (corresponding author, phone: 319-400-9760; e-mail: Kim1652@Purdue.edu).

R. Sterkenburg is with Purdue University, West Lafayette, IN 47907 USA.

structural materials, polymeric materials absorb more water, hydraulic fluid and solvents [9]. Cise and Lakes [19] reported that epoxy matrix composites can absorb water by five percentages by weight. The liquid absorption rate of the honeycomb core is higher than the facesheet laminate because the core has a lower density than the facesheets [9]. Paper honeycomb core in particular is very sensitive to temperature and humidity [20]. It changes its mechanical properties dramatically when the environment changes. Although it cannot achieve its design capability in changing environmental conditions, not many of them account for moisture ingress during the design phase [19], [20].

Several research studies have shown the adverse effects of water or fluid intrusion into honeycomb core [3]. They reported that absorbed liquids can degrade the mechanical, thermal, electrical, or physical properties of the structure [9]. If a honeycomb part is exposed to a humid environment for a long time, the moisture ingresses into the honeycomb panel and the water will cumulate inside of honeycomb core cells. This water increases the weight of the part, and it makes the honeycomb structure lose its main beneficial aspect, light weight [21]. Yeo et al. [14] showed degradation of flatwise tension strength and compression after impact strength of Nomex[®] honeycomb sandwich test specimen in hot/wet condition. Wang et al. [20] reported that a higher moisture content decreases the critical stress and plateau stress of the honeycomb during compressive test with paper honeycomb. Semple et al. [4] showed that paper honeycomb losses its flexural stiffness, shear strength, compressive strength significantly in high humidity (95% RH) compared to normal humidity (65% RH). Allred & Roynance [22] and Yin et al. [23] reported that degradation of mechanical property of Nomex[®] honeycomb core is caused by water molecules which destroy hydrogen bond network of the aramid fiber. If a composite structure absorbs moisture, the polymer matrix can be plasticized which degrades the structure (physical aging). Plasticization of the polymer matrix decreases the glass transition temperature (T_g) of a composite material, and a decreased T_g leads to a decrease in stiffness of the composite material and increases mechanical damping [19]. Moisture ingress can cause degradation of the adhesive bond of the panel and could lead to a complete debonding between facesheet and the core of the honeycomb sandwich structure [3], [11], [14], [21]. If there is moisture inside of the honeycomb cell, repeated freeze and thaw mechanism caused by temperature change causes destruction of the honeycomb core and the bond between facesheets and the core [1], [7]. However, Fogarty [15] reported that honeycomb sandwich structure can trap some moisture in a real operational environment, but it is not true that wide spread ingress of moisture for entire structure is inevitable. Fogarty [15] showed that many researchers found that moisture ingress can be prevented. Even if there is moisture ingress into the structure, it does not cause progressive weight increase and strength degradation [15]. Also, Kim et al. [24] reported that flexural strength and impact resistance strength of Nomex[®] honeycomb sandwich structure which was soaked in fuel, oil,

hydraulic fluid, and water did not show a significant degradation after 30 days of draining period. This study demonstrated the influence of aircraft fluids, such as fuel, oil, hydraulic, and water on mechanical properties, especially the compressive strength of Nomex[®] honeycomb sandwich structure. Also, it showed how the fluids affected the bonding area between facesheets and the core.

II. EXPERIMENT

Honeycomb structure test specimens were prepared in accordance with ASTM C365/C365M-16 standard. The test specimen consisted of three different components; facesheets, honeycomb core, and film adhesive. A facesheet for both sides of the specimen was needed to prevent local crush of the honeycomb core. Facesheets were made of HexPly F155 fiberglass prepreg material. Fiberglass facesheet provided transparency to see through the facesheet to check the liquid pooling in a honeycomb cell during the soaking period. Two layers of prepreg material with a [0/90] orientation were laid up and cured. The 1.27 cm thick hexagonal Nomex[®] honeycomb core was bonded to the facesheets using AX 2114 epoxy film adhesive. The density of the core was calculated using the following equation [25];

$$d = \frac{1000000W}{lwt} \quad (1)$$

where d is density of core, and W is mass of the core. l, w, t represent length, width, and thickness of core respectively [25]. The density of the core which was used in this study was 62.318 kg/m³. The cured honeycomb sandwich panel was cut into 3.175 cm x 3.175 cm specimens. All the dimensions of the specimen, including length, width and thickness were measured. ASTM C365/C365M-16 required that all the dimensions needed to be in the one percent range of the designated size of the specimen [26]. Therefore, all the specimen was checked to confirm that their dimensions were within the requirements and applicable for the test. The Grubb's statistical data analysis test was performed on specimen's length, width, thickness, and weight to find any outliers in the specimen group. According to the Grubb's test results with a significance level of 0.05, there was no significant outlier in the specimen group. Fig. 1 shows the drawing of a honeycomb sandwich panel assembly and a compressive test specimen that was ready to be tested.

Four different kinds of fluids were used for this research; Jet-A fuel, Mobile Jet oil I, Skydrol LD-4 hydraulic fluid, and distilled water. These four fluids are most commonly used in aircraft and they are prone to ingress into the core through skin panel damage [9]. The test specimens were placed in a glass container and the applicable fluid was poured in it. The jar was filled so that all specimens were completely covered. The extra honeycomb core was placed on top of the specimens inside of the container to keep the specimens covered and prevent floating of the specimens. All containers were sealed and stored for 60 days.

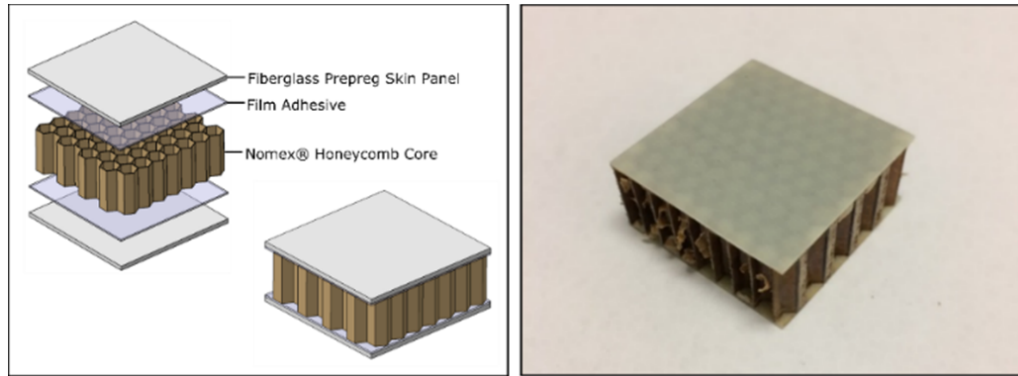


Fig. 1 Honeycomb sandwich panel assembly drawing and the test specimen

The test specimens were divided into two different groups; wet group and dry group. Wet group specimens were removed from the container after they were soaked and tested right away. Dry group specimens were left outside for one week after they were removed from the fluid container to drain the fluid out from the inside of the core before they were tested. The authors designed the test to investigate how honeycomb sandwich structure recovers its mechanical strength when it dried. Each specimen was weighted right before it was tested to check fluid content of each specimen. A MTS 810 test machine was used for the test. A self-aligning flat table was used as the bottom fixture and a fixed head flat fixture was used for the top fixture. The test speed was set at 0.50 mm/min. Time, displacement and load were measured and the sampling rate was three data records per second. Fig. 2 illustrates the test fixtures and testing process.

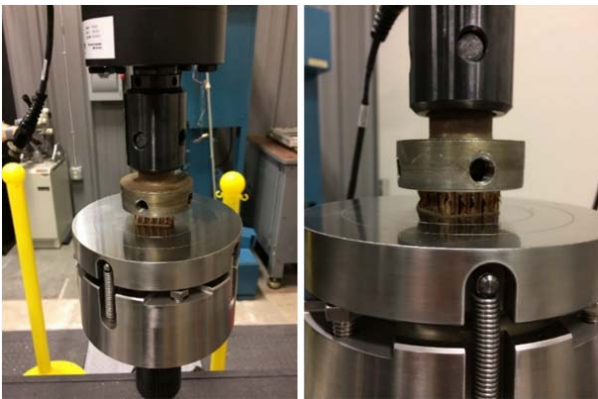


Fig. 2 Test Settings and the Compressed Test Specimen

III. RESULTS

There were nine subgroups of test specimen; fuel-wet, fuel-dry, oil-wet, oil-dry, hydraulic-wet, hydraulic-dry, water-wet, water-dry and control group. In each subgroup, there were ten test specimens, except for the control group which had only eight test specimens in the group. A total of 88 test specimens were prepared and tested. A compressive test was performed on each test specimen and the time, displacement, and load data were collected. OriginPro was used as the data analysis

program. For smoothing data and reducing the noises, a 5 points adjacent-averaging smooth function with weighted average option was used. Fig. 3 shows the load versus displacement plot for representative specimen in each group. Representative specimens were selected for the ones that had the closest ultimate strength to the average ultimate strength for each group.

ASTM C365/C365M-16 described using two different values to analyze compressive strength of the honeycomb sandwich structure; ultimate strength, and compressive modulus. Ultimate strength of the test specimen was calculated using following equation [26];

$$F_z^{fcu} = P_{max}/A \quad (2)$$

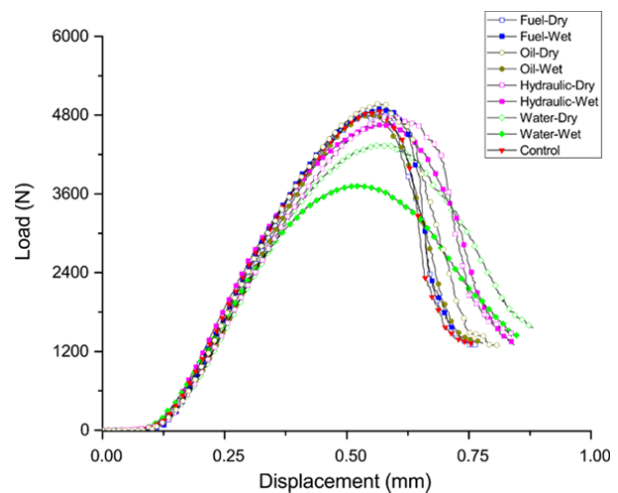


Fig. 3 Load versus displacement plot for representative specimen in each group

where F_z^{fcu} is the ultimate flatwise compressive strength, P_{max} is ultimate failure load, and A is cross sectional area of the structure that is calculated to $31.75 \text{ mm} \times 31.75 \text{ mm} = 1008.0625 \text{ mm}^2$. To calculate the compressive modulus of the specimen, stress and strain were calculated using collected data using following equations;

$$\sigma = P/A \quad (3)$$

$$\epsilon = \Delta L / L_2 \quad (4)$$

where σ is stress, and P is applied compressive load. ϵ is strain, ΔL is thickness change during compressive test, and L_2 is original thickness of specimen. Compressive modulus was calculated by finding slope of Hookean region which makes the curve linear in stress versus strain graph [26].

$$E = d\sigma / d\epsilon \quad (5)$$

where E is modulus of elasticity, $d\sigma$ is change in stress, and $d\epsilon$ is change in strain. In this research, the slope of Hookean region in test data was shown as maximum positive slope of the graph. Therefore, compressive modulus of each test specimen was calculated by finding max slope in linear portion of the stress versus strain graph. The slope was calculated using 'Movslope' function in OriginPro data analysis software which uses following equation [27];

$$b = \frac{\sum_{n=i_1}^{i_2} (x_n - \bar{x})(y_n - \bar{y})}{\sum_{n=i_1}^{i_2} (x_n - \bar{x})^2} \quad (6)$$

where b is the slope at point i , $i_1 = i - \frac{k-1}{2}$, $i_2 = i + \frac{k-1}{2}$, $\bar{x} = \sum_{n=i_1}^{i_2} x_n$, and k is width of the window. The window width of 10 was used to calculate the slope of the graph. Fig. 4 shows

the ultimate flatwise compressive strength and compressive modulus in stress versus strain graph. Table I shows mean and standard deviation of ultimate compressive strength and compressive modulus for each fluid group. Fig. 5 shows the ultimate flatwise compressive strength and compressive modulus for each test group.

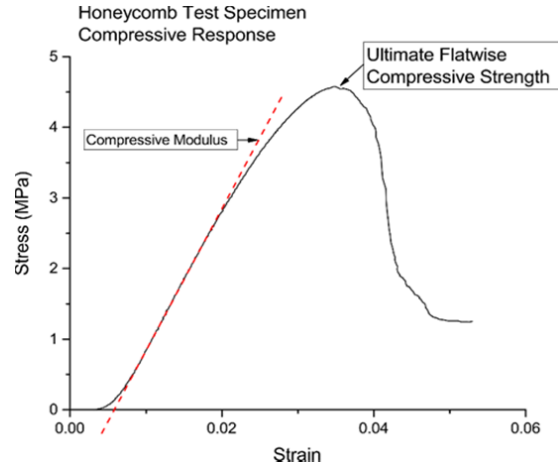


Fig. 4 Ultimate flatwise compressive strength and compressive modulus in stress versus strain graph

TABLE I
MEAN AND STANDARD DEVIATION OF ULTIMATE COMPRESSIVE STRENGTH AND COMPRESSIVE MODULUS OF EACH FLUID GROUP

Group	Number of specimen	Ultimate Compressive Strength		Compressive Modulus	
		Mean (MPa)	Standard Deviation (MPa)	Mean (MPa)	Standard Deviation (MPa)
Fuel-dry	10	4.773	0.214	220.194	5.291
Fuel-wet	10	4.894	0.215	216.701	8.981
Oil-dry	10	4.760	0.242	201.252	18.681
Oil-wet	10	4.339	0.205	199.163	10.160
Hydraulic-dry	10	4.846	0.208	221.684	5.421
Hydraulic-wet	10	4.791	0.128	217.865	6.317
Water-dry	10	4.588	0.070	207.807	17.710
Water-wet	10	3.687	0.131	194.379	7.013
Control	8	4.824	0.310	217.942	9.347

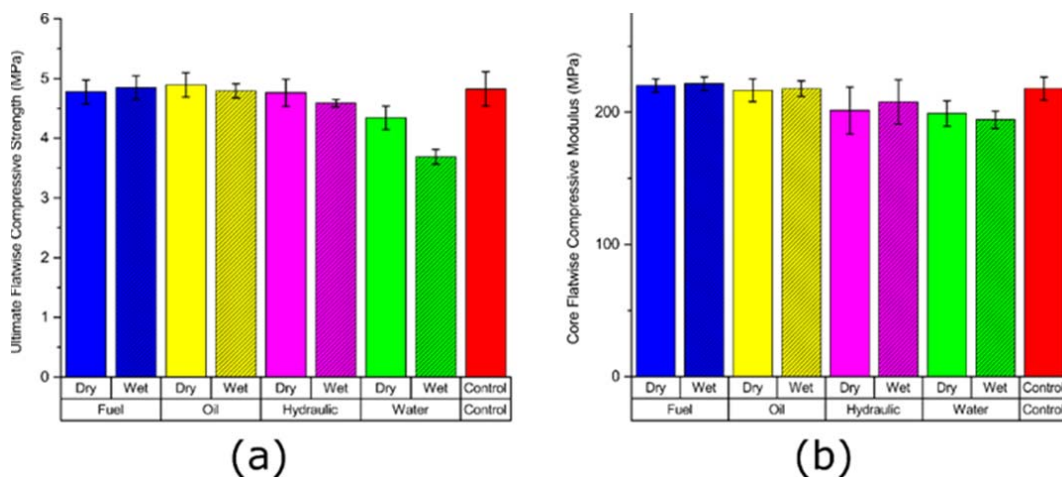


Fig. 5 Ultimate flatwise compressive strength (a) and compressive modulus (b) for each test group

Statistical analysis was performed to find if there was any significant difference on ultimate flatwise compressive strength and the compressive modulus between each specimen group. Since the normality test indicated that not all the data in each specimen group were normally distributed, the authors decided to use the Mann-Whitney test which does not need normality assumption of the data to find any significant degradation of each fluid groups compared to the control group. Significance level of 0.05 with Bonferroni correction was used, $0.05/m$, m is number of comparison=8, $0.05/8=0.00625$. According to the Mann-Whitney test, both water dry (p-value=0.00513) and wet group (p-value=4.48668E-4) had significantly lower ultimate flatwise compressive strength than control group. The mean ultimate strength of the water wet group was decreased by 23.57% compared to the control group. Also, the mean ultimate strength of water dry group was decreased by 10.05% compared to the control group. Other fluid groups did not show any significant degradation on ultimate strength of specimen. The Mann-Whitney test also showed compressive modulus of water dry group (p-value=0.00388) and water wet group (p-value=0.00161) were significantly lower than the control group. The water dry group had an 8.62% lower compressive modulus and water wet group had a 10.81% lower compressive modulus than the control group. Other fluid groups had no significantly lower compressive modulus than the control group. Water wet and water dry group showed a significantly lower ultimate compressive strength and compressive modulus. Also, the water dry group showed a higher compressive strength and modulus than the water wet group. The test results showed that a Nomex[®] honeycomb panel recovered its compressive mechanical property after a one week draining period. Therefore, the relationship between the moisture content of the test specimen and its compressive mechanical property were studied. The moisture content was calculated using:

$$MC = \frac{w_w - w_d}{w_w} \times 100 \quad (7)$$

where MC is moisture content, w_w is weight of the test sample when it is wet, and w_d is the original weight of the sample. The moisture content for each specimen in the water dry group and water wet group were calculated. The water-wet group had 6.46% of average moisture content and Water-dry group had 1.65% of average moisture content. Moisture content versus ultimate strength and moisture content versus compressive modulus for both water dry and wet group specimen were plotted and a regression analysis was performed to check if there was any relationship between the water content level and the mechanical properties of the specimen. Fig. 6 shows scatter plots of moisture content versus ultimate strength and moisture content versus compressive modulus. The regression lines for both moisture content versus ultimate strength and moisture content versus compressive modulus showed a negative relationship.

According to the linear regression analysis, the ultimate strength of the test specimen decreased by about 0.087 MPa for every 1% of moisture content increases (R-square=0.58). Also, the compressive modulus of the test specimen decreased by about 1.15 MPa for every 1% of moisture content increases (R-square=0.23). However, the scatter plots showed a non-linear pattern, therefore, non-linear regression analysis was performed to fit the line to the scatter plots. For ultimate strength versus moisture content plot, polynomial regression analysis with polynomial order of two was used. The regression analysis showed that the equation Ultimate strength = $4.67712 - 0.25111 * \text{moisture content} + 0.0133 * \text{moisture content}^2$ was fitted with R-square of 0.78. It was not realistic that the ultimate strength increases when the moisture content increases after 9% moisture content, therefore, an exponential non-linear curve regression analysis was performed. Exponential regression analysis showed the equation Ultimate strength = $3.56041 - 1.40126 * 0.66882^{(\text{Moisture content})}$ with R-square value of 0.80. The compressive modulus versus moisture content plot showed a non-constant variance issue in the plot. Therefore, the data was revised by logging both moisture content and compressive modulus. Polynomial regression analysis with polynomial order of two was also performed for the revised data. The regression analysis fitted the scatter plot to the equation $\log(\text{compressive modulus}) = 2.28896 - 0.03883 * \log(\text{moisture content}) + 0.01193 * (\log(\text{moisture content}))^2$ was fitted to the scatter plot with R-square = 0.27. Exponential non-linear regression analysis showed equation $\log(\text{compressive modulus}) = 2.26855 - 0.02813 * (1.93435E^{-4})^{\log(\text{moisture content})}$ with R-square = 0.32.

After the test, specimens in each group were cut in half and the inside of the specimens were inspected to determine how the fluids intruded into the honeycomb core. The liquid pooling in the cells was limited to the first and second row of the cells from the edge of the specimens. The cut cross-sectional area of the core showed that absorbed fluid intruded all the way to the middle section of the specimen. The honeycomb cell was discolored by the fluids. Fig. 7 shows a cut cross-sectional area of tested specimen from each fluid group. The cross-sectional area of the specimen was observed using a microscope to check if there was any significant erosion on the honeycomb wall. The microscopic picture of the specimen from each fluid group did not show any significant erosion on the honeycomb wall. Fig. 8 shows the microscopic picture of cross-sectional area of the core for each fluid group. The thickness of the wall for each specimen was measured and compared. 50 different thickness measurements for a single wall across the cut area was collected and the Mann-Whitney non-parametric test was used to compare each group to the control group with a Bonferroni correction for a significant level of 0.0125. The Mann-Whitney test showed no significant difference on the wall thickness between each group and the control group.

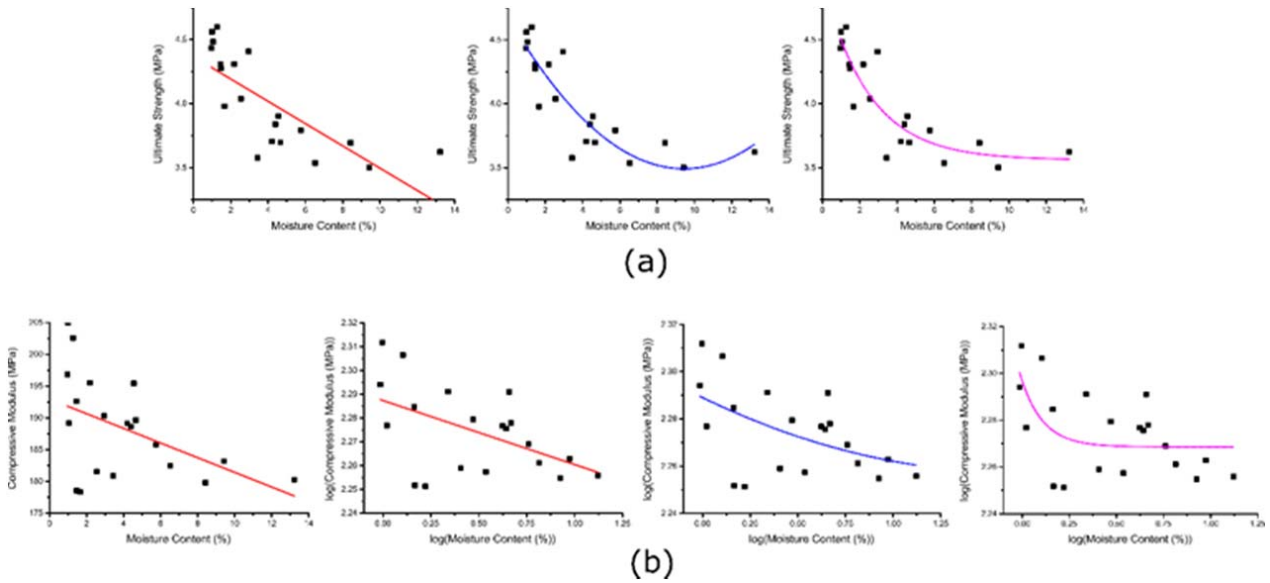


Fig. 6 Linear (a-1), polynomial (a-2), exponential (a-3) regression analysis of moisture content vs ultimate strength. Linear regression analysis of and moisture content vs compressive modulus (b-1), and linear (b-2), polynomial (b-3), exponential (b-4) regression analysis of log(moisture content) versus log(compressive modulus)

TABLE II
WALL THICKNESS MEASUREMENTS FOR EACH FLUID GROUP

Group	Number of measurements	Mean (μm)	Standard Deviation (μm)
Fuel	50	66.388	5.970
Oil	50	63.642	5.154
Hydraulic	50	64.304	4.602
Water	50	65.076	3.630
Control	50	65.283	5.283

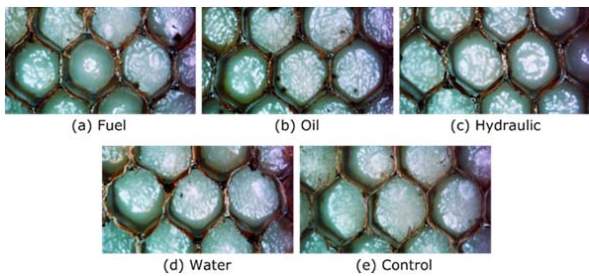


Fig. 7 The cut honeycomb test specimens after testing

After the test, it was observed that the facesheets of the specimen were detached from the core for the hydraulic group specimen. Therefore, microscopic pictures were taken on the bonding line between the core and facesheet for each group and compared. The microscopic pictures showed the deterioration of the bonding in the hydraulic group specimen, and the deterioration occurred from end tip of the core. Fig. 9 shows the microscopic pictures of bonding area for each fluid group.

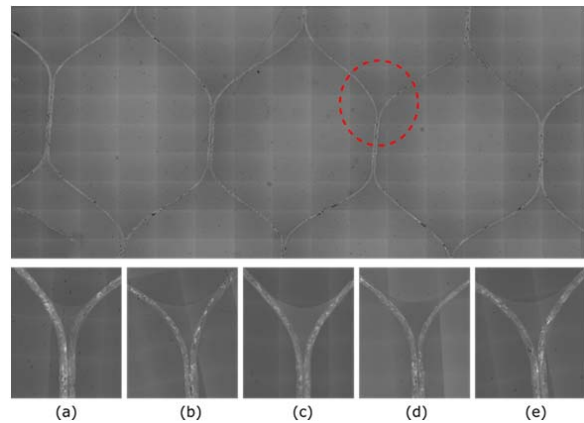


Fig. 8 The microscopic picture of cross-sectional area of honeycomb core from fuel (a), oil (b), hydraulic fluid (c), water (d), and the control group (e)

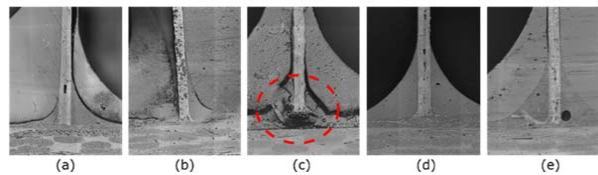


Fig. 9 Microscopic picture of the bonding line for fuel (a), oil (b), hydraulic (c), water (d), and the control (e) group

IV. CONCLUSION

The honeycomb compressive test on test specimens which were soaked in various types of aircraft fluids was successfully performed. Water ingress in honeycomb core sandwich panel significantly lowered the compressive strength and modulus of the specimens. However, jet fuel and oil did

not affect the compressive strength of the honeycomb sandwich specimen significantly. Comparing Water-Wet sample group and Water-Dry sample group showed that honeycomb core recovered its compressive strength when it dried. Although Water-Dry sample group recovered some of its mechanical property, it still had a significantly lower ultimate compressive strength and modulus than the control group. Based on the moisture content analysis, the one-week drying period was not enough to dry all the fluid inside of the core. Additional research with longer drying period will be necessary to determine if a honeycomb panel recovers its full compressive strength when it is fully dry.

The regression analysis showed that the moisture content negatively affects ultimate strength and compressive modulus of Nomex® honeycomb sandwich structure during compressive test. The ultimate strength versus moisture content and the compressive modulus versus moisture content scatter plot showed a non-linear pattern. The non-linear curve fits, polynomial and exponential regression line, showed higher R-square value than linear regression line for both ultimate strength versus moisture content and compressive modulus versus moisture content. Also, the regression analysis showed higher R-square value in the relationship between ultimate strength and moisture content than the relationship between compressive modulus and moisture content. The results showed that moisture content affects the ultimate compressive strength of Nomex® honeycomb structure more than flatwise compressive modulus.

Even the statistical analysis test did not show a significant influence of hydraulic fluid on ultimate flatwise compressive stress and flatwise compressive modulus of Nomex® honeycomb, the hydraulic group showed relatively lower ultimate flatwise compressive stress and flatwise compressive modulus than the other fluid groups. The microscopic picture analysis showed that absorbed hydraulic fluid deteriorated the bonding between facesheets and the core. Therefore, hydraulic fluid inside of a Nomex® honeycomb sandwich structure must be removed as soon as possible. In this research, only one type of fuel, oil and hydraulic fluid was used, and therefore, the results of this study cannot be generalized to all types of fluids used in aircraft systems.

REFERENCES

- [1] Synaszko P, Sałaciński M, Kornas L. The Effect of environmental flight conditions on damage propagation in composite sandwich structure. *Fatigue of Aircraft Structures*. 2015; 2015(7):24-27.
- [2] Vavilov V, Marinetti S, Pan Y, Chulkov A. Detecting water ingress in aviation honeycomb panels: Qualitative and quantitative aspects. *Polymer Testing*. 2016; 54: 270-280.
- [3] LaPlante G, Marble AE, MacMillan B, Lee-Sullivan P, Colpitts BG, Balcom BJ. Detection of water ingress in composite sandwich structures: a magnetic resonance approach. *NDT & E International*. 2005; 38(6):501-507.
- [4] Semple KE, Sam-Brew S, Deng J, Cote F, Yan N, Chen Z, Smith GD. Properties of commercial kraft paper honeycomb furniture stock panels conditioned under 65 and 95 percent relative humidity. *Forest Products Journal* 2015; 65(3-4):106-122.
- [5] Foo CC, Chai GB, Seah LK. Mechanical properties of Nomex® material and Nomex® honeycomb structure. *Composite Structures*. 2007;80(4):588-594. C. J. Kaufman, Rocky Mountain Research Lab., Boulder, CO, private communication, May 1995.
- [6] Zinno A, Prota A, Di Maio E, Bakis CE. Experimental characterization of phenolic-impregnated honeycomb sandwich structures for transportation vehicles. *Composite structures*. 2011;93(11):2910-2924.
- [7] Larobina D, Mensitieri G, Aldi A, Calvi E, Iannone M, Manzi F, Nicolais L. An integrated approach to analyze long-term moisture transport in honeycomb-core sandwich panels. *Journal of Composite Materials*. 2010;44(21):2473-2486.
- [8] Herrmann AS, Zahlen PC, Zuardy I. Sandwich structures technology in commercial aviation. *Sandwich Structures: Advancing with Sandwich Structures and Materials, Proceedings of the 7th International Conference on Sandwich Structures, Aalborg, 29-31 August 2005*. p.13-26.
- [9] Kececi E, Asmatulu R. Effects of moisture ingressions on mechanical properties of honeycomb-structured fiber composites for aerospace applications. *The International Journal of Advanced Manufacturing Technology* 2017;88(1):459-470.
- [10] Liu L, Meng P, Wang H, Guan Z. The flatwise compressive properties of Nomex® honeycomb core with debonding imperfections in the double cell wall. *Composites Part B: Engineering*. 2015;76:122-132.
- [11] Edwards AK, Savage S, Hungler PL, Krause TW. Examination of F/A-18 honeycomb composite rudders for disbond due to water using through-transmission ultrasonics. *Ultrasonics* 2011;66(2):36-44.
- [12] Roy R, Park SJ, Kweon JH, Choi JH. Characterization of Nomex® honeycomb core constituent material mechanical properties. *Composite Structures*. 2014;117:255-266.
- [13] Davies JM. *Lightweight Sandwich Construction*. Hoboken, NJ: John Wiley & Sons, 2008.
- [14] Yeo ES, Wang J, Mirabella L, Rider AN. Effect of humidity and thermal cycling on carbon-epoxy skin/aramid honeycomb structure. In *Materials Science Forum 2010 (Vol. 654, pp. 2600-2603)*. Trans Tech Publications.
- [15] Fogarty J. Honeycomb core and the myths of moisture ingress. *Applied Composite Materials* 2010;17(3):293-307.
- [16] Radtke TC, Charon A, Vodicka R. Hot/wet environmental degradation of honeycomb sandwich structure representative of F/A-18: Flatwise tension strength. *Defence Science and Technology Organisation, Melbourne*. 1999.
- [17] Hungler PC, Bennett LG, Lewis WJ, Schulz M, Schillinger B. Neutron imaging inspections of composite honeycomb adhesive bonds. *Nuclear Instruments and Methods in Physics Research Section A: Accelerators, Spectrometers, Detectors and Associated Equipment*. 2011;651(1):250-252.
- [18] Rider A. The durability of metal-honeycomb sandwich structure exposed to high humidity conditions. *Defence Science Technology Organisation Victoria Aeronautical Maritime Research Lab. Fisher Bend*. 2002.
- [19] Cise DM, Lakes RS. Moisture ingress in honeycomb core sandwich panels: Directional aspects. *Journal of Composite Materials*. 1997;31(22):2249-2263.
- [20] Wang DM, Wang J, Liao QH. Investigation of mechanical property for paper honeycomb sandwich composite under different temperature and relative humidity. *Journal of Reinforced Plastics and Composites*. 2013;32(13):987-997.
- [21] Marble AE, LaPlante G, Mastikhin IV, Balcom BJ. Magnetic resonance detection of water in composite sandwich structures. *NDT & E International*. 2009;42(5):404-409.
- [22] Allred RE, Roylance DK. Transverse moisture sensitivity of aramid/epoxy composites. *Journal of Materials Science*. 1983;18(3):652-656.
- [23] Yin F, Tang C, Li X, Wang X. Effect of moisture on mechanical properties and thermal stability of meta-aramid fiber used in insulating paper. *Polymers*. 2017;9(10):537.
- [24] Kim G, Sterkenburg R, Tsutsui W. Investigating the effects of fluid intrusion on Nomex® honeycomb sandwich structures with carbon fiber facesheets. *Composite Structures*. 2018;206:535-549.
- [25] ASTM C271/C271M-16 Standard Test Method for Density of Sandwich Core Materials, ASTM International, West Conshohocken, PA, 2016.
- [26] ASTM C365/C365M-16 Standard Test Method for Flatwise Compressive Properties of Sandwich Cores, ASTM International, West Conshohocken, PA, 2016.
- [27] OriginLab. Help Online – LabTalk Programming - Movslope (Internet). (cited 31 August 2018). Available from: <https://www.originlab.com/doc/LabTalk/ref/Movslope-func>.