

# Flood Scenarios for Hydrological and Hydrodynamic Modelling

Md. Sharif Imam Ibne Amir, Mohammad Masud Kamal Khan, Mohammad Golam Rasul, Raj H Sharma, Fatema Akram

**Abstract**—Future flood can be predicted using the probable maximum flood (PMF). PMF is calculated using the historical discharge or rainfall data considering the other climatic parameters remaining stationary. However climate is changing globally and the key climatic variables are temperature, evaporation, rainfall and sea level rise are likely to change. To develop scenarios to a basin or catchment scale these important climatic variables should be considered. Nowadays scenario based on climatic variables is more suitable than PMF. Six scenarios were developed for a large Fitzroy basin and presented in this paper.

**Keywords**—Climate change, rainfall, potential evaporation, scenario, sea level rise (SLR), sub-catchment.

## I. INTRODUCTION

AUSTRALIA has an extremely variable climate [1]-[3]. Extreme weather events like floods will become more severe and frequent due to climate change [4]. Rainfall, drought and stream flow variability in Australia is more than the rest of the world [5], [6]. Between 1910 and 2004, average maximum and minimum land surface temperatures in Australia have rose by 0.6°C and average minimum temperatures rose by 1.2°C [7], [8]. Most of the rise increase has occurred since 1950.

References [9], [10] found that the frequency of high sea level is increasing significantly around Australia. Sea level rise (SLR) along the Australian coastline is more rapid at present than in the past [11]-[13]. Rising sea levels will continue to rise and as a result frequency and intensity of coastal flooding, inundation, flood and storm damage, and drainage congestion will increase during the 21<sup>st</sup> century [14]. For instance, eastern Australia was extremely wet during late November and December 2010. Widespread flooding on many rivers, especially in Queensland and New South Wales, was observed due to major rain events. Extreme flooding occurred from the last week of December 2010 to first week of January 2011 in Queensland. These floods were the most significant floods in Australia since the 1970s. The Murrumbidgee and Lachlan catchments of inland New South Wales also experienced considerable flooding in December 2010. Record-breaking floods also occurred in western and north-western Victoria in January 2011. For Queensland and eastern Australia, December 2010 was the wettest December on

Md. Sharif Imam Ibne Amir, Mohammad Masud Kamal Khan, Mohammad Golam Rasul, Raj H Sharma and Fatema Akram are with the School of Engineering and Technology, Central Queensland University, Rockhampton, QLD 4700, Australia (e-mail: m.amir@cqu.edu.au, m.khan@cqu.edu.au, m.rasul@cqu.edu.au, r.sharma@cqu.edu.au, f.akram@cqu.edu.au)

record. Water levels in many of the affected catchments were already high due to rainfall in July to October before the heavy rainfall in late November and December 2010 [15].

Reference [16] developed a data set for severe tropical cyclones in an area extending from Cairns to 1,600 km southward. They found that the number of severe cyclones in the last 20 years was lower than the number in all other twenty-year periods since 1880. This suggests that the number of tropical cyclone events along the eastern coastline is likely to be higher in future decades. Similarly, severe tropical cyclone along the east coast of Australia was projected to increase by 56% by 2050 [17], 22% by 2050 [18] and 140% by 2070 [19]. Besides, reference [19] found an increase in intensity (Category 3-5) and duration of cyclone which will create severe flood.

The traditional approach for future flood is the probable maximum flood (PMF) which has been used in several studies [20]-[27]. PMF is the limiting value of flood that could reasonably be expected to occur. It is based on observations of extreme events in the current climate with a design period. For example, if the design period is 100 years or 500 years, then PMF can happen only once in every 100 years or once in every 500 years respectively. This PMF is calculated from measured historical data which is rarely longer than 100 years. Consequently, statistical extrapolation (i.e. extreme value distribution) is required for the calculation outside the historical measured data. The climate is considered stationary for this statistical extrapolation which seems inappropriate now a day [28]. In contrast, climate scenarios are more appropriate rather than PMF for use in studies exploring the impacts of climate change [29]-[31]. Scenarios based on climate change provide information on the chance of weather extremes. They are neither long term weather forecast nor prediction of weather on a certain day. Rather, these scenarios are consistent and plausible pictures of possible future climate. Therefore, scenarios based on climate change are viewed more suitable than the PMF to explore the impact of climate change on future flood. In this paper functional scenarios are presented based on climate change in a case study area of the Fitzroy Basin.

## II. STUDY AREA

The study area is the Fitzroy basin, which is located in the east part of Queensland, Australia (Fig. 1). This area lies geographically between latitude 21°S and 27°S and longitude 147°E and 151°E [32]-[33]. The Fitzroy river catchment covers an area of 144,000 km<sup>2</sup> [33]. A total of 6 sub-

catchments have been defined based on six major rivers of this basin. All of the sub-catchments and major river systems are presented in Fig. 1. Development of scenario for flood modelling of a large basin like the Fitzroy is a difficult task due to its large catchment size, the long duration flood events, the non-uniform spatial distribution of rainfall and the lack of required data for modelling. Therefore, the whole Fitzroy basin was divided into two parts. Probability based statistical analysis was carried out in the five upstream sub-catchment to upper Fitzroy sub-catchment and developed six scenarios for hydrological modelling. The climatic variables rainfall, potential evaporation, temperature and SLR were analysed to develop the scenarios in the area of interest – the lower Fitzroy sub-catchment. The scenarios developed for the lower Fitzroy basin was applied for integrated hydrological and hydrodynamic modelling. Both the area is presented in Fig. 1.

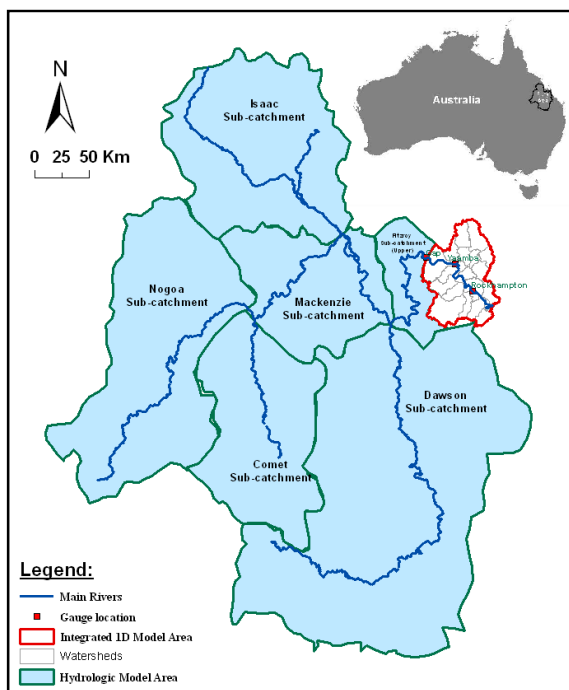


Fig. 1 Study area

### III. METHODOLOGY

Three impacts were considered to formulate the flood scenarios. These were:

- i) upstream catchment flooding effect,
- ii) local climatic fluctuation on rainfall, potential evaporation

- and temperature due to climate change, and
- iii) SLR due to climate change.

#### A. Impact of Flooding in Upstream Sub-Catchments

The weighted daily rainfall data of five sub-catchments were analysed for the period 1 January 1909 to 31 March 2011 to find out the probability of the synchronisation of maximum rainfalls in two or more sub-catchments using joint probability distribution. According to the Bureau of Meteorology (BOM), the Rockhampton area experiences significant moderate to major flooding if the average sub-catchment rainfall exceeds 200 mm in 2 days. As the available rainfall data is daily, the days when 100 mm or more rainfall occurred in one day were identified. A spreadsheet-based macro was used for this analysis. In the 100 years of rainfall data, a total of 274, 241, 195, 176 and 208 independent days were found in the Isaac, Nogoa, Mackenzie, Comet and Dawson sub-catchments respectively. Daily rainfall in each sub-catchment was considered as an independent event.

#### B. Impact of Climatic Variables in Local Sub-Catchment

Projections calculating the impact of climate change on rainfall, potential evaporation and temperature for all over the Australia were carried out by CSIRO based on the results from 23 Global Climate Models (GCMs) [34]. Queensland Climate Change Centre for Excellence (QCCCE) has extracted the GCMs dataset to get the projection of rainfall, potential evaporation and temperature for the Central Queensland region (Rockhampton Aero station). The base period for the calculated projections was taken as 1980–1990 and three emission scenarios for 2030, 2050 and 2070 were projected. Little difference was found in the results for low, medium and high emissions scenarios for 2030 of the GCMs. Therefore, for 2030, climate change projections have been considered only for a mid-range emissions scenario. However, the 2050 and 2070 projections are based on low and high emissions scenarios because of divergence of GCM results.

The projected change of rainfall, potential evaporation and temperature is shown in Table I for the summer season of the Rockhampton region for the year 2030, 2050 and 2070. The numbers presented in Table I indicate the range of the results from the GCMs. As the study was intended to generate the extreme flood events from cyclones which normally occur during the summer season, the projected increase to rainfall, potential evaporation and temperature during the summer season were used for the development of the scenarios.

TABLE I

PROJECTED CHANGES OF RAINFALL, POTENTIAL EVAPORATION AND TEMPERATURE FOR THE ROCKHAMPTON STATION FOR DIFFERENT EMISSION SCENARIOS

Variable	2030	2050		2070	
	(Medium Range)	Low	High	Low	High
Rainfall	-12 to +8	-14 to +10	-23 to +16	-19 to +13	-34 to +26
Potential Evaporation	+2 to +5	+2 to +4	+3 to +10	+3 to +8	+5 to +15
Temperature	+0.6 to +1.4	+0.8 to +1.8	+1.3 to +2.9	+1.0 to 2.4	+2.0 to +4.7

### C. Impact of SLR

CSIRO developed global SLR projections for 2030-2100 for the three emission scenarios (low: B1, medium: A1F1 and high-end: AR4) which are presented in Table II. Table II shows global sea level rises (SLRs) of 0.5 m, 0.8 m and 1.1 m in 2100 for low, medium and high scenarios respectively.

TABLE II  
GLOBAL SLR SCENARIOS BETWEEN 2030-2100 (METRES)

Year	Low scenario (B1)	Medium scenario (A1F1)	High-end scenario (AR4)
2030	0.13	0.15	0.20
2070	0.30	0.50	0.70
2100	0.50	0.80	1.10

Projected regional SLRs vary from the global mean trend due to several effects including meteorological, oceanographic, and geological influences [35]. Besides, global mean sea level reconstruction is based on satellite radar altimeters which is theoretically less effective [14]. Therefore it is important to use the regional projections of SLRs for simulating the hydrodynamic model to obtain appropriate predictions of future extreme events.

Reference [14] estimated relative sea level trends for 47 tide gauges around Australia which have more than 25 years of recorded data. To the best of our knowledge, this is the most up-to-date and accurate study of sea level trends for this study area. Therefore for this study a 1.95 mm/year projected SLR has been taken for the simulation of climate change scenarios according to the recommendation of reference [14].

## IV. RESULTS

### A. Upstream Catchment Flooding Effect

To calculate the probability of two or more sub-catchments experiencing maximum rainfall simultaneously, all possible combinations of sub-catchments were analysed. The results of the analysis are presented in the Table III. This table shows the probability of synchronisation for two, three, four and five sub-catchments. The first ten rows represent the different combinations of synchronisation of maximum rainfalls in two sub-catchments. From the 26 combinations, four combinations were selected for four scenarios.

The mean rainfalls of the sub-catchments were analysed for the historical flood events of 1918, 1928, 1954, 1988, 1991, 2008 and 2011. This analysis is presented in Table IV. This analysis was carried out to identify the synchronisation of two or more sub-catchments during the flood events, and to select the scenarios.

Table III shows that the Mackenzie and the Comet sub-catchments have the greatest probability of synchronisation. However, the Isaac and the Nogoia sub-catchments were synchronised during the historic flood events of 1988. Therefore the combination of the Isaac and the Nogoia sub-catchments was selected as a scenario due to this historical flood event. Similarly, the three sub-catchments: Isaac, Mackenzie and Comet were selected for a scenario although the maximum probability was not found for the combination

of these three sub-catchments. Another scenario was selected for maximum rainfall in four sub-catchments: Isaac, Nogoia, Mackenzie and Comet which is similar with the the 1918 flood event. It is evident from the historical data that the five upstream sub-catchment flows have never synchronised. Though the possibility of occurrence such a situation is very low, it is felt that the impact of such a situation should be assessed.

TABLE III  
PROBABILITY OF SYNCHRONISATION OF MAXIMUM RAINFALL IN TWO OR MORE SUB-CATCHMENTS

Sl.	Combination of sub-catchment*	Probability	Return period
1	I and N	0.034	29
2	I and M	0.068	15
3	I and C	0.034	29
4	I and D	0.024	41
5	N and M	0.049	20
6	N and C	0.103	10
7	N and D	0.049	20
<b>8</b>	<b>M and C</b>	<b>0.112</b>	<b>9</b>
9	M and D	0.054	19
10	C and D	0.054	19
11	I, N and M	0.010	102
12	I, N and C	0.015	68
13	I, N and D	0.005	205
14	I, M and C	0.029	34
15	I, M and D	0.005	205
16	I, C and D	0.005	205
17	N, M and C	0.039	26
18	N, M and D	0.015	68
19	N, C and D	0.024	41
20	M, C and D	0.020	51
21	I, N, M and C	0.010	102
22	I, N, M and D	0.005	205
23	I, N, C and D	0.005	205
24	I, M, C and D	0.005	205
25	N, M, C and D	0.010	102
26	I, N, M, C and D	0.000	-

\* I, N, M, C and D denote Isaac, Nogoia, Mackenzie, Comet and Dawson respectively.

TABLE IV  
SYNCHRONISATION OF MAXIMUM RAINFALL OCCURRENCE IN TWO OR MORE SUB-CATCHMENTS

Historical flood events	Peak water level at Rockhampton	Synchronised sub-catchments
1918	10.11	Isaac, Nogoia, Mackenzie and Comet
1988	8.4	Isaac, Nogoia
2011	9.2	Isaac, Mackenzie and Comet

### B. Scenario Design

Considering above three important factors, six scenarios were formulated to evaluate the impacts of flooding in Rockhampton area. It was important to calculate normal flow year for the development of baseline scenario (Scenario-1). For that reason, a flood frequency analysis was carried out using yearly maximum discharge time series data for the last 50 years. HYMOS [36], a hydrological data management and processing tool developed by Delft Hydraulics, was applied to analyses the data. Log Pearson III distribution was used for

frequency analysis because this method is recommended for catchments in Australia [37]. Gumbel distribution was carried out to validate the results of the Log Pearson III distribution. The yearly maximum peak discharge data from the Gap station were used for the frequency analysis. These data are presented in Fig. 2. The maximum peak discharges were 14,549 m<sup>3</sup>/s and 13,274 m<sup>3</sup>/s in the years 1991 and 2011 respectively. The results of frequency analysis for the Gumbel and the Log Pearson III distribution are shown in Figs. 3 and 4 respectively. The flow event which has a frequency of occurrence 2.33 years is considered as a normal flow year [38]. It can be seen from Figs. 3 and 4 that discharges values greater than 3,500 m<sup>3</sup>/s and less than 4,000 m<sup>3</sup>/s correspond a normal flow year. It was found from Fig. 2 that this discharge value was similar to that for the years 1977, 1997, 1998, and 2003. Therefore, years 1997 and 1998 were considered as normal flow years. The chosen simulation period was two years from 1 January 1997 to 31 December 1998 for this study in order to overcome the instability error involved in using short duration simulation. Scenarios 2 to 4 were chosen similar to three historical flood events. Though historical data shows that five upstream sub-catchments have never synchronised, the impact of such a situation was assessed in Scenario-5. According to reference [17], the frequency of severe tropical cyclones is projected to increase 56% in future decades. Therefore, in Scenario-6 rainfall was increased by 56% in all sub-catchments.

Scenarios (2 to 6) were simulated by replacing the summer (December 1997 to February 1998) rainfall with the corresponding maximum historical rainfall. After the simulation of six scenarios, discharge at the Gap station was used as the upstream model boundary for the integrated model. Hydrologic model of 21 watersheds were linked with the integrated model. The weight for rainfall, evaporation and temperature of these watersheds were increased according to projected rainfall, evaporation and temperature changes projected to occur by 2070 for different emission scenarios during the summer season only, as floods normally happen during this season. A constant SLR of 1.404 m was used as the downstream model boundary. The six scenarios are presented in Table IV.

#### V. CONCLUSION AND DISCUSSION

Rockhampton city is renowned as the beef capital of Australia and famous for its position on the tropic of Capricorn. It is located downstream of the Fitzroy Basin and has a long history of flooding. During the severe flood event all upstream flood water passes through the Fitzroy River in Rockhampton. Functional scenarios based on the combined impacts of climate change and synchronization of severe rainfall on upstream sub-catchments is presented in this paper to explore the impact of climate change on future flood. The whole Fitzroy basin was divided into two parts. A probability based scenarios were developed in the upstream part. In the downstream part the climatic variable rainfall, potential evaporation, temperature and SLR were considered. These scenarios were applied in the hydrological and hydrodynamic

modelling to predict the future extreme flood in Rockhampton and surrounding areas.

The methodology proposed here is a case study and can be applied in any other catchment. Development of climate scenarios can be applied to other catchments which have the impact from upstream catchment and SLR. However, scenarios will vary due to different hydrological and meteorological condition and different climate change impacts.

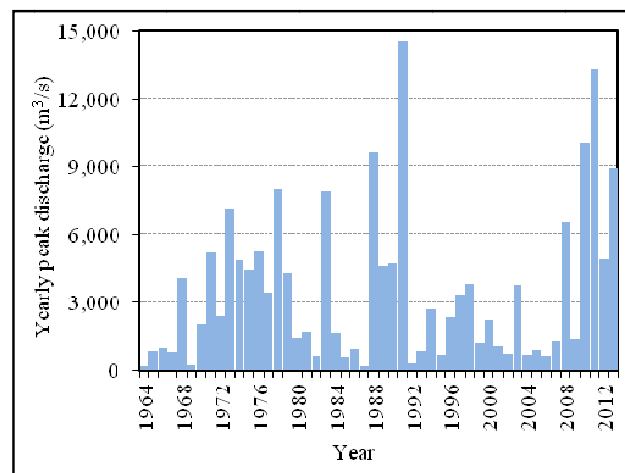


Fig. 2 Yearly peak discharge at Gap station

TABLE V  
GENERATION OF DIFFERENT SCENARIOS

Scenarios	Similarity with historical flood event	Probability	Hydrological model considerations		HD model considerations		
			Normal flow year	Historical maximum	Rainfall (%)	Potential Evaporation (%)	Temperature (°C)
Scenario-1 (Normal flow)	-	-	all upstream five sub-catchments		-	-	-
Scenario-2 (Low flow)	1988	0.034	Mackenzie, Comet and Dawson	Isaac, Nogoia	13	3.0	1.00
Scenario-3 (Medium flow)	2011	0.029	Nogoia and Dawson	Isaac, Mackenzie and Comet	15	3.5	1.25
Scenario-4 (High flow)	1918	0.010	Dawson	Isaac, Nogoia, Mackenzie and Comet	20	4.0	1.50
Scenario-5 (Very high flow)	-	-	-	all upstream five sub-catchments	26	5.0	2.00
Scenario-6 (Extreme high flow)	-	-	-	1.56 times in all upstream five sub-catchments	26	5.0	2.00

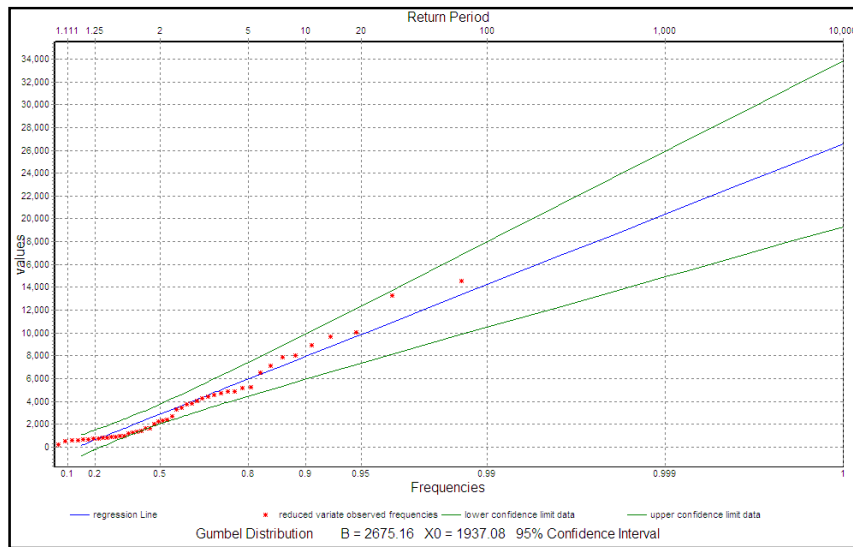


Fig. 3 Frequency analysis using Gumbel distribution for Gap station

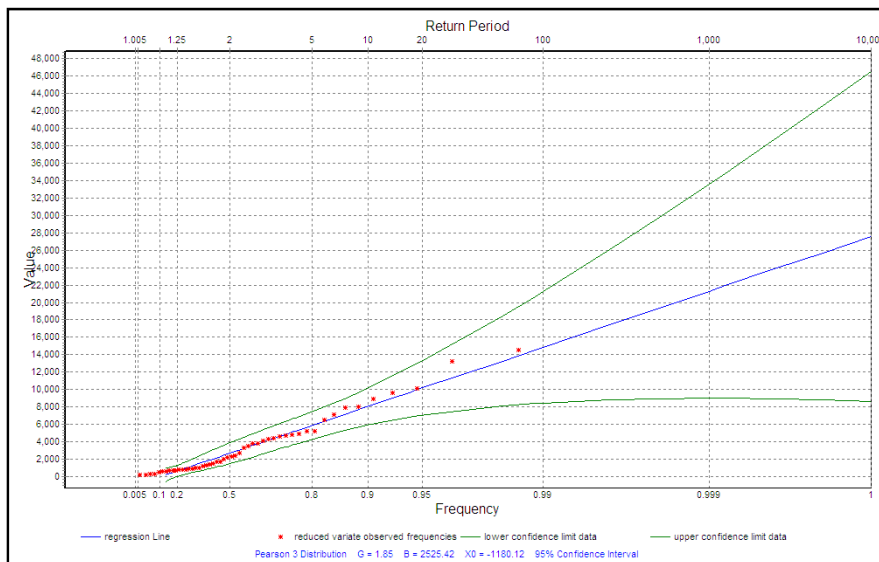


Fig. 4 Frequency analysis using Log Pearson III distribution for Gap station

## ACKNOWLEDGMENT

The author gratefully acknowledges the Bureau of Meteorology, Australia for the time series rainfall, temperature and evaporation data.

## REFERENCES

- [1] J. J. McCarthy, *Climate change 2001: impacts, adaptation, and vulnerability: contribution of Working Group II to the third assessment report of the Intergovernmental Panel on Climate Change*: Cambridge University Press, 2001.
- [2] M. S. I. I. Amir, M. M. K. Khan, M. G. Rasul et al., "Numerical modelling for the extreme flood events in the Fitzroy basin, Queensland, Australia," *International Journal of Environmental Science and Development*, vol. 4, no. 3, pp. 346-350, June 2013.
- [3] M. S. I. I. Amir, M. M. K. Khan, M. G. Rasul, R. H. Sharma, and F. Akram, "Watershed delineation and cross-section extraction from DEM for flood modelling," In 19<sup>th</sup> Australasian Fluid Mechanics Conference, Melbourne, Australia, 8-11 December 2014.
- [4] IPCC, *Intergovernmental Panel on Climate Change; The Fourth Assessment Report of the Climate Change*, 2007.
- [5] B. L. Finlayson, and T. A. McMahon, "Runoff variability in Australia. Causes and environmental consequences," Perth, Australia, 1991, pp. 504-511.
- [6] Australian Bureau of Meteorology, *Annual Sea Level Data Summary Report, July 2010-June 2011*, The Australian Baseline Sea Level Monitoring Project, National Tidal Centre (Internet), <http://www.bom.gov.au/ntc/IDO60202/IDO60202.2011.pdf> (accessed 28.01.2015).
- [7] N. Nicholls, and D. Collins, "Observed climate change in Australia over the past century," *Energy and Environment*, vol. 17, no. 1, pp. 1-12, 2006.
- [8] M. S. I. I. Amir, M. M. K. Khan, M. G. Rasul, R. H. Sharma, and F. Akram, "A review of downscaling and 1-D/2-D hydraulic model for flood studies," In *Proceedings of the Central Region Engineering Conference*, Rockhampton, Queensland, Australia, 10-11 August 2012, pp. 80-85.
- [9] Australian Federal Government's Climate Commission, 2011. *The Critical Decade* (Internet). [http://climatecommission.files.wordpress.com/2013/09/the-critical-decade-2013\\_website.pdf](http://climatecommission.files.wordpress.com/2013/09/the-critical-decade-2013_website.pdf) (accessed 28.01.2015).
- [10] T. A. McMahon, B. L. Finlayson, A. T. Haines, and R. Srikanthan, *Global runoff: continental comparisons of annual flows and peak discharges*: Catena Verlag, 1992.
- [11] Australian Bureau of Meteorology, *Australian Baseline Sea Level Monitoring Project* (Internet). [www.bom.gov.au/oceanography/projects/abslmp/abslmp.shtml](http://www.bom.gov.au/oceanography/projects/abslmp/abslmp.shtml) (accessed 28.01.2015).
- [12] J. Church, N. White, J. Hunter, K. McInnes, P. Cowell, and S. O'Farrell, *Sea-level rise*: CSIRO Publishing, Collingwood, Victoria, 2008.
- [13] J. A. Church, J. R. Hunter, K. L. McInnes, and N. J. White, "Sea-level rise around the Australian coastline and the changing frequency of extreme sea-level events," *Australian Meteorological Magazine*, vol. 55, no. 4, pp. 253-260, 2006.
- [14] A. Parker, M. Saad Saleem, and M. Lawson, "Sea-level trend analysis for coastal management," *Ocean & Coastal Management*, vol. 73, pp. 63-81, 2013.
- [15] T. D. Keenan, and H. A. Cleugh, *Climate science update: a report to the 2011 Gamaut review*, Technical Report No. 036, Centre for Australian Weather and Climate Research, 2011.
- [16] J. Callaghan, and S. Power, "Variability and decline in the number of severe tropical cyclones making land-fall over eastern Australia since the late nineteenth century," *Climate Dynamics*, vol. 37, no. 3-4, pp. 647-662, 2011/08/01, 2011.
- [17] K. Walsh, K.-C. Nguyen, and J. McGregor, "Fine-resolution regional climate model simulations of the impact of climate change on tropical cyclones near Australia," *Climate Dynamics*, vol. 22, no. 1, pp. 47-56, 2004.
- [18] L. Leslie, D. Karoly, M. Leplatrier et al., "Variability of tropical cyclones over the southwest Pacific Ocean using a high-resolution climate model," *Meteorology and Atmospheric Physics*, vol. 97, no. 1-4, pp. 171-180, 2007.
- [19] D. Abbs, S. Aryal, E. Campbell, J. McGregor, K. Nguyen, M. Palmer, T. Rafter, I. Watterson, and B. Bates, *Projections of extreme rainfall and cyclones*, A report to the Australian Greenhouse Office, Canberra, Australia, 2006.
- [20] J. Sammut, and W. D. Erskine, "Age and hydrological significance of lichen limits on sandstone river channels near Sydney, Australia," *Geografiska Annaler: Series A, Physical Geography*, vol. 95, no. 3, pp. 227-239, 2013.
- [21] D. Patel, and P. Srivastava, "Application of Geo-Spatial Technique for Flood Inundation Mapping of Low Lying Areas," *Remote Sensing Applications in Environmental Research*, Society of Earth Scientists Series P. K. Srivastava, S. Mukherjee, M. Gupta et al., eds., pp. 113-130: Springer International Publishing, 2014.
- [22] L. S. Kuchment, and A. N. Gelfan, "Assessment of extreme flood characteristics based on a dynamic-stochastic model of runoff generation and the probable maximum discharge," *Journal of Flood Risk Management*, vol. 4, no. 2, pp. 115-127, 2011.
- [23] W. Yizgaw, F. Hossain, and A. Kalyanapu, "Comparison of PMP-Driven Probable Maximum Floods with Flood Magnitudes due to Increasingly Urbanized Catchment: The Case of American River Watershed," *Earth Interactions*, vol. 17, no. 8, pp. 1-15, 2013.
- [24] D. B. Wright, J. A. Smith, G. Villarini et al., "Estimating the frequency of extreme rainfall using weather radar and stochastic storm transposition," *Journal of Hydrology*, vol. 488, no. 0, pp. 150-165, 2013.
- [25] M. C. Casas, R. Rodríguez, M. Prohom et al., "Estimation of the probable maximum precipitation in Barcelona (Spain)," *International Journal of Climatology*, vol. 31, no. 9, pp. 1322-1327, 2011.
- [26] D. Patel, and P. Srivastava, "Flood Hazards Mitigation Analysis Using Remote Sensing and GIS: Correspondence with Town Planning Scheme," *Water Resources Management*, vol. 27, no. 7, pp. 2353-2368, 2013.
- [27] J. Yazdi, and S. A. A. Salehi Neyshabouri, "Optimal design of flood-control multi-reservoir system on a watershed scale," *Natural Hazards*, vol. 63, no. 2, pp. 629-646, 2012.
- [28] Royal Netherlands Meteorological Institute, *Climate Change in the Netherlands* (Internet). <http://www.knmi.nl/bibliotheek/klimaatbrochures/supplementsto06scenarios.pdf> (accessed 28.01.2015).
- [29] N. W. Arnell, and S. N. Gosling, "The impacts of climate change on river flow regimes at the global scale," *Journal of Hydrology*, 2013.
- [30] A. Bakker, B. Van den Hurk, J. Bessembinder et al., "Standard years for large-scale hydrological scenario simulations," *Environmental Modelling & Software*, vol. 26, no. 6, pp. 797-803, 2011.
- [31] J. Houghton, Y. Ding, D. Griggs et al., "IPCC, 2001: Climate Change 2001: The Scientific Basis. Contribution of Working Group I to the Third Assessment Report of the Intergovernmental Panel on Climate Change," Cambridge, United Kingdom, New York, USA, Cambridge University Press, vol. 881, pp. 9, 2001.
- [32] M. S. I. I. Amir, M. M. K. Khan, M. G. Rasul, R. H. Sharma, and F. Akram, "Rainfall, temperature and evaporation trends in the Fitzroy Basin, Queensland, Australia," In 34<sup>th</sup> Hydrology and Water Resources Symposium, Sydney, Australia, 19-22 November 2012.
- [33] M. S. I. I. Amir, M. M. K. Khan, M. G. Rasul, R. H. Sharma, and F. Akram, "Automatic Multi-Objective Calibration of a Rainfall Runoff Model for the Fitzroy Basin, Queensland, Australia," *International Journal of Environmental Science and Development*, vol. 4, no. 3, pp. 311-315, June 2013.
- [34] Commonwealth Scientific and Industrial Research Organisation and Bureau of Meteorology, *Climate Change in Australia, Technical Report 2007* (Internet). <http://www.csiro.au/Organisation-Structure/Divisions/Marine--Atmospheric-Research/Climate-Change-Technical-Report-2007.aspx> (accessed 28.01.2015).
- [35] X. Zhou, J. Zheng, D.-J. Doong et al., "Sea level rise along the East Asia and Chinese coasts and its role on the morphodynamic response of the Yangtze River Estuary," *Ocean Engineering*, vol. 71, pp. 40-50, 10/1/, 2013.
- [36] HYMOS 4, User Manual.
- [37] IEAust, *Australian Rainfall and Runoff - A Guide to flood estimation*, Engineers Australia, 1997.
- [38] R. Alam, Z. H. Khan, M. S. I. I. Amir, and S. Akhter, "Model Study for prediction of thermal discharge diffusion for proposed 360 MW combined cycle power plant at Haripur," In 2<sup>nd</sup> International Conference on Water and Flood Management, Dhaka, Bangladesh, 15-17 March 2009.