

Autonomous Virtual Agent Navigation in Virtual Environments

Jafreezal Jaafar and Eric McKenzie

Abstract—This paper presents a solution for the behavioural animation of autonomous virtual agent navigation in virtual environments. We focus on using Dempster-Shafer's Theory of Evidence in developing visual sensor for virtual agent. The role of the visual sensor is to capture the information about the virtual environment or identify which part of an obstacle can be seen from the position of the virtual agent. This information is required for virtual agent to coordinate navigation in virtual environment. The virtual agent uses fuzzy controller as a navigation system and Fuzzy α - level for the action selection method. The result clearly demonstrates the path produced is reasonably smooth even though there is some sharp turn and also still not diverted too far from the potential shortest path. This has indicated the benefit of our method, where more reliable and accurate paths produced during navigation task.

Keywords—Agent, Navigation, Dempster Shafer, Fuzzy Logic.

I. INTRODUCTION

Navigation is the process where people control their movement using environment cues and artificial aids such as maps so that they can achieve their goal without getting lost [1]. Autonomous virtual agent navigation in a virtual environment can be described as the ability of a virtual agent to move purposefully without user intervention. The navigation task may be decomposed into three sub-tasks: mapping and modeling the environment; path planning and selection; path following and collision avoidance [2]. Virtual agent navigation can occur in known and unknown environments. For a known environment, the virtual agent will have knowledge about the environment and can generate the navigation path. The methods used are based on optimization and computational intelligence. In contrast, in an unknown environment in which the virtual agent does not have any knowledge about the environment, the navigation path is generated according to user specifications and the virtual agent cannot be prepared ahead of time [3].

II. PREVIOUS WORK

The basic problem of navigation is moving from one place to another by the coordination of planning, sensing and control. The challenge is generating an optimal traversing sequence through the user-specified locations of interests and computation of a collision free path. [3] had shown an example of a path traversing through all user-specified locations. In order to navigate in an unknown environment, a virtual agent needs to deal with the environment in a timely manner.

Jafreezal Jaafar is a lecturer with Computer and Information Sciences Department, Universiti Teknologi PETRONAS, Malaysia (email: jafreez@petronas.com.my).

Eric McKenzie is a Senior Lecturer at School of Informatics, University of Edinburgh

Approaches such as discrete grid based [4], central path computation [5] and roadmap with tactical information approaches [6] have been used for collisions free path planning. For example [7] studied navigation among static and movable obstacles. The planner takes advantage of the navigational structure through state-space decomposition and a heuristic search. The planning complexity is reduced to the difficulty of the specific navigation task, rather than the dimensionality of the multi-object domain.

Inspired by studies in human behaviour, [8] proposed a general model to simulate the navigation process inside indoor and outdoor environments. Techniques such as set hierarchy, regular graph, artificial potential field and corner graph have been used but are only suitable for 2D environments. One of the reasons is those algorithms require high computational resource in 3D environments. For a 3D environment, navigation mesh and waypoint graph techniques are very popular. A navigation mesh technique is a representation that covers the walkable surface of the world with convex polygons [9]. Waypoint is a set of points in the 3D environment with reachability links between them [10], where we can place a waypoint at any point in 3D space. The disadvantages of these two techniques are large memory usage, and they require a powerful processor. Even though some of these techniques have been used in computer games, it is still not clear that these approaches have been used in autonomous navigation in virtual environments [11].

Artificial intelligence techniques, for example neural networks [12], genetic algorithms [13] and reinforcement learning [14] have been used. [15] presented a multi-agent based evolutionary artificial neural network (ANN) for general navigation. The virtual creature explores unknown environments as far as possible with obstacle avoidance. Through constant interaction with the environment, the virtual agent systems co-decide and consult with each other for the move decision. [12] have integrated attention and navigation skills in a 3D virtual agent. They divided their neural model into two main phases. First of all, the environment categorization phase, online pattern recognition and categorization of the virtual agent current input sensor data is carried out by an adaptive resonance driven self organizing neural network. Then, the model must learn how and when to map the current short term memory state into navigation and the attention of the virtual agent. However the majority of 3D virtual agents focus on low cost global techniques to solve navigation problems and attention is less frequently considered in virtual worlds.

The reactive virtual agent [16] is capable of carrying out autonomous navigation. The virtual agent extends the artificial potential field approach, used for trajectory formation,

Then, the virtual agent moves and scans the environment. If n cells exist in the vision field sector, the basic probability assignment for the vision field sector is as follows:

$$m_{i,j}(F) = \frac{1}{n}, m_{i,j}(E) = 0, \forall \text{cells}(i,j) \in \text{sector} \quad (5)$$

$$m_{i,j}(F) = 0, m_{i,j}(E) = 0, \forall \text{cells}(i,j) \notin \text{sector} \quad (6)$$

By adding subscripts S and M to basic probability masses m , we can describe the basic probability assignment of the sensor as equations 8 and 9:

$$K = 1 - m_M(E)m_S(F) - m_M(F)m_S(E) \quad (7)$$

$$m_M \oplus m_S(E) = \frac{\{m_M(E)m_S(E) + m_M(E)m_S(\{E,F\}) + m_M(\{E,F\})m_S(E)\}}{K} \quad (8)$$

$$m_M \oplus m_S(F) = \frac{\{m_M(F)m_S(F) + m_M(F)m_S(\{E,F\}) + m_M(\{E,F\})m_S(F)\}}{K} \quad (9)$$

However, the number of states can be reduced to two $(m_{i,j}(E), m_{i,j}(F))$, assuming that $m_{i,j}(\phi) = 0$ and applying equation 2. The state $(0,0)$ means total ignorance, and so $m_{i,j}(\{E,F\}) = 1$. When the virtual agent is sure about cell occupancy, $m_{i,j}(F) = 1$, the other labels are made equal to zero. On the other hand, $m_{i,j}(E) = 1$ when the virtual agent is sure that the cell is empty.

The input value Θ of the virtual agent, which is a real number normalized in the interval $[0,1]$, then results from a weighted sum of all the points in the visual field.

$$\Theta = \sum_x (2^{-2d(x)} \mu(x)) \quad (10)$$

summed over all x in visual field

where $d(x)$ is the distance of a point x from the current position of the virtual agent, and $\mu(x)$ indicates the availability of the point x . Since the visual sensor is related to availability of spaces in the visual field, it is independent of specific environments and objects. The result is that the occupancy of cells is increased. This process will be carried on until the virtual agent reaches the goal.

B. Fuzzy Controller

A Fuzzy Associative Memory (FAM) is used as a process of encoding and mapping the input fuzzy sets to the output fuzzy set [21]. The fuzzy controller is based on our proposed method [22], [23]. Consider a set of fuzzy rules, $R = \{R_1, R_2, \dots, R_i, \dots, R_k\}$, where R_m is the m^{th} rule of the fuzzy controller. The rule R_m is given as follows:

$$\text{IF } X_1 \text{ is } A_1^m \text{ AND } X_2 \text{ is } A_2^m \text{ AND } \dots \text{ AND } X_n \text{ is } A_n^m \text{ THEN } Z \text{ is } C_n^m \quad (11)$$

The following fuzzy relation will implement R_i :

$$R_m \left(\begin{matrix} X_1, X_2, \\ \dots, X_n, Z \end{matrix} \right) = \left[\begin{matrix} A_1^m(X_1) \wedge A_2^m(X_2) \\ \wedge \dots \wedge A_n^m(X_n) \end{matrix} \right] \rightarrow C_n^m(Z) \quad (12)$$

where X_1, X_2, \dots, X_n are input variables which are the sensor data of the virtual agent, $A_1^m, A_2^m, \dots, A_n^m$ are the input fuzzy sets, C_n^m is the output fuzzy set, Z is the output variable, n is the dimension of the input vector.

The weighted sum C for each individual membership can be defined by using *minmax* aggregation [24] operators as given below:

$$C = \sum_{m=1}^k U_m C'_m = \sum_{m=1}^k U \left(\left[\begin{matrix} A_1^m(X_1) \wedge A_2^m(X_2) \wedge \dots \wedge A_n^m(X_n) \end{matrix} \right] \Rightarrow C_m(Z) \right) \quad (13)$$

where the non-negative weight U_m , summarises the strength of the m^{th} FAM rule for the m^{th} FAM entry and $n \times m$ is the number of rules in the system. In order to relate the n^{th} fuzzy set of the m^{th} fuzzy rule, the fuzzy implication model using the Mamdani *min* operator [25] interprets the logical rules for rule firing. we obtain the final defuzzification response for a k output membership function $\mu_C(z)$ is defined as:

$$\mu_C(z) = \max_{m=1}^k \left[\min_{x=U} \left[\mu_{A_n^m}(X_n), \mu_{R_m}(X_1, X_2, \dots, X_n, Z) \right] \right] \quad (14)$$

Equations (12) and (14) are used to derive the FAM model and the output fuzzy system, respectively.

C. Action Selection Method

In the decision making process multiple conflicting objectives should be considered simultaneously, subject to certain constraints dictated by the virtual agent limitations [26]. A major issue in the design of systems for controlling an autonomous virtual agent is the formulation of an effective mechanism for the combination of multiple objectives into strategies for rational and coherent behaviour [26]. For example, given a set of actions, $X = \{x_1, x_2, \dots, x_n\}$, the virtual agent has to decide which is the most appropriate or the most relevant next action to take at a particular moment, when facing a particular situation [27].

The fuzzy action selection method is inspired by the ranking method of [28], [29] and [30] and uses α -level and fuzzy subtraction operations to calculate the area of a new fuzzy number, which is produced by the comparison of two fuzzy numbers. If there are m fuzzy numbers, then $m(m-1)/2$ pairs of fuzzy numbers must be compared to determine overall rank. Our proposed method will reduce the redundancy of calculating $m(m-1)/2$ pairwise comparisons to m pairwise comparisons by the fuzzy subtraction operation.

In general, when comparing m different fuzzy numbers produced by each behaviour the height and common maximizing and minimizing barriers are used. Let $\mu_{\tilde{X}}(x)$ be the membership function of a fuzzy number, \tilde{X} (behaviour output), defined on R . Unlike convexity, assumptions about the normality of $\mu_{\tilde{X}}(x)$ are made.

In Figure 3, an arbitrary, bounded fuzzy number \tilde{X} has given. Suppose $\tilde{X}_{\alpha_0}, \tilde{X}_{\alpha_1}, \dots, \tilde{X}_{\alpha_n}$ are the α -level interval numbers of \tilde{X} and they have the following properties:

- 1) $\tilde{X}_{\alpha_i} = [l_i, r_i]$, $i = 0, 1, \dots, n$, where l_i is the left spread of \tilde{X}_{α_i} , and r_i is the right spread of \tilde{X}_{α_i} .
- 2) $\alpha_0 = 0, \alpha_n = 1$ and $\alpha_0, \alpha_1, \dots, \alpha_n$ is strictly increasing sequence.

- 3) The distance between each two adjacent α - level values are equal, i.e. $\alpha_i - \alpha_{i-1} = \alpha_i - \alpha_{k-1}, \forall i, k \in \{1, 2, \dots, n\}$.

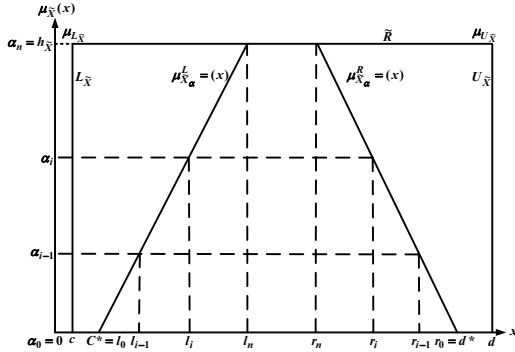


Fig. 3. Trapezoidal fuzzy number

Based on [31], the loci of the left or right spreads and the maximum and minimum barriers of the α - cut of the fuzzy number, \tilde{X} , are $\mu_{\tilde{X}_\alpha}^L(x)$ and $\mu_{\tilde{X}_\alpha}^R(x)$, $0 \leq \alpha \leq h_{\tilde{X}}$, respectively, where $h_{\tilde{X}}$ is the height. If \tilde{X}_α is denumerable or connected, then:

$$\begin{aligned} \mu_{\tilde{X}_\alpha}^L(x) &= \min_{\alpha} \{x | x \in \tilde{X}_\alpha\}, 0 \leq \alpha \leq h_{\tilde{X}}, \text{ and} \\ \mu_{\tilde{X}_\alpha}^R(x) &= \max_{\alpha} \{x | x \in \tilde{X}_\alpha\}, 0 \leq \alpha \leq h_{\tilde{X}} \end{aligned} \quad (15)$$

In addition the maximizing and minimizing barriers can be defined as:

- The crisp maximizing barrier, $U_{\tilde{X}}$, of the membership function for the fuzzy number \tilde{X} is defined as $\mu_{U_{\tilde{X}}}(x) = \frac{h_{\tilde{X}}}{d}$, where $\max_{\alpha} \{\mu_{\tilde{X}_\alpha}^R(x)\} = d^* \leq d \leq \infty$.
- The crisp minimizing barrier, $L_{\tilde{X}}$, of the membership function for the fuzzy number \tilde{X} is defined as $\mu_{L_{\tilde{X}}}(x) = \frac{h_{\tilde{X}}}{c}$ where $0 \leq \alpha \leq \alpha^* = \min_{\alpha} \{\mu_{\tilde{X}_\alpha}^L(x)\}$.

The height, maximizing and minimizing barriers are set to:

$$\begin{aligned} h_{\tilde{X}}(x) &= \max_i \{\mu_{\tilde{X}_i}(x) | i = 1, 2, \dots, m\}, \\ c &= \min_{\alpha} \left\{ \mu_{\tilde{X}_\alpha}^L(x) | i = 1, 2, \dots, m; 0 \leq \alpha \leq h_{\tilde{X}} \right\} \quad (6) \\ d &= \min_{\alpha} \left\{ \mu_{\tilde{X}_\alpha}^R(x) | i = 1, 2, \dots, m; 0 \leq \alpha \leq h_{\tilde{X}} \right\}. \end{aligned}$$

Based on equation 16, $h_{\tilde{X}}(x)$ is the maximum value of the height of all m fuzzy numbers. The variables c and d are at the minimum value of the left spread and the minimum right spread of all fuzzy numbers, respectively. To simplify the fuzzy subtraction between the fuzzy number \tilde{X} and referential rectangle \tilde{R} , at α_i level, interval subtraction is used:

$$\begin{aligned} \tilde{X}_{\alpha_i} \langle - \rangle \tilde{R} &= [l_i, r_i] [-] [c, d] \\ &= [l_i - d, r_i - c], i = 1, 2, \dots, n \end{aligned} \quad (17)$$

then, the behaviour weight, ω of equation (17) becomes:

$$\omega(\tilde{X}_i, \tilde{R}) = \frac{\sum_{i=0}^n (r_i - c)}{\sum_{i=0}^n (r_i - c) - \sum_{i=0}^n (l_i - d)} \quad (18)$$

where n is the number of α - levels. As n approaches to ∞ , the summation becomes the area measurement.

In equation (18), $\sum_{i=0}^n (r_i - c)$ is a positive value and $\sum_{i=0}^n (l_i - d)$ is a negative value. Here, the denominator represents the total area as n approaches ∞ . In addition, if all of the aggregated fuzzy numbers are normal and within the unit interval, then $h_{\tilde{X}} = 1, c = 0, d = 1$, and equation (18) becomes:

$$\omega(\tilde{X}_i, \tilde{R}) = \frac{\sum_{i=0}^n r_i}{\sum_{i=0}^n r_i - \sum_{i=0}^n (l_i - 1)}, \text{ and } n = \infty \quad (19)$$

In our case, the behaviour weight value ω from equation (19) will be used. For every ω , we use the Hurwicz criterion, which selects the lowest value from each behaviour as δ_1 ; and then selects the highest value from each behaviour as δ_2 . The index of optimism [32], σ , is used to represent the level of optimism of the virtual environment.

When selecting one particular action from a range of possible actions, the selection is based on the Hurwicz criterion [31] which is defined as:

$$\eta = \sigma \cdot (\min_{i=1}^m \omega_{ij_0}) + (1 - \sigma) \cdot (\max_{i=1}^m \omega_{ij_0}) \quad (20)$$

$$\text{where } \eta = \begin{cases} \sigma = 0 \rightarrow \text{max-min criterion} \\ 0 < \sigma < 1 \rightarrow \text{compromise opinion} \\ \sigma = 1 \rightarrow \text{max-max criterion} \end{cases} \quad (21)$$

Based on the above discussion, the following algorithm has been developed. Let $\tilde{X}_1, \tilde{X}_2, \dots, \tilde{X}_j, \dots, \tilde{X}_m$ be m arbitrary bounded fuzzy numbers produced by each behaviour.

Step 1: Set the height $h_{\tilde{X}}(x)$, common maximizing barrier d and minimizing barrier c for referential rectangle \tilde{R} .

Step 2: Determine the subtracted interval numbers $[l - d, r - c]$, $i = 1, 2, \dots, n$ by calculating the n α -levels for each fuzzy number $\tilde{X}_j \langle - \rangle \tilde{R}$, $j = 1, 2, \dots, m$.

Step 3: Determine the behaviour weight, ω for each \tilde{X}_j , by equation (19).

Step 4: Repeat Steps 2 and 3, for every j , $j = 1, 2, \dots, m$ and the m behaviour weights for fuzzy numbers are obtained.

Step 5: For every ω , use the minimax (maximin) criterion, which selects the lowest value from each behaviour as δ_1 and selects the highest value from each behaviour as δ_2 .

Step 6: Determine the index of optimism σ . The final action

is selected based on the Hurwicz criterion using equation (20).

IV. RESULTS

Experiments were also conducted to observe the effect of using different degrees of optimism, σ , by the virtual agent to navigate in complex environments. Figure 4 shows the result of the experiment conducted in a cluttered environment using different degrees of optimism, σ , which are (a), $\sigma = 0.9$ and (b) $\sigma = 0.4$. The environments contain different sizes of obstacle and narrow passages. The virtual agent in Figure 4(a) has produced a shorter path compared to the virtual agent in Figure 4(b). However the number of steps is higher compared to Figure 4(b). The main reason is that the virtual agent is required to go through a narrow passage in order to produce the shortest path. In Figure 4(b), the virtual agent has made a sharp turn and high number of time steps at this point. As a result the virtual agent take a big turn to the wider passage before turning and reaching the goal. Time steps at the rest of the path are consistent since there is no complex obstacle to avoid. The results show that the decision process by the virtual agent is affected by the degree of optimism. Using a higher value of σ makes the virtual agent enter the narrow passage compare to a low value of σ which makes the agent prefer to select the wider passage. However the number of decisions and steps might vary depending on the complexity of the environment.

Further experiments with complex environments have been conducted. The environments contain a combination of maze and cluttered obstacles and three random goals have been selected. The degree of optimism, $\sigma = 0.5$, was used for the first trial. Unfortunately this value did not give a very promising result as in Figure 5. The virtual agent had successfully reached the goal, but paths produced are long with many sharp turns and a high number of time steps.

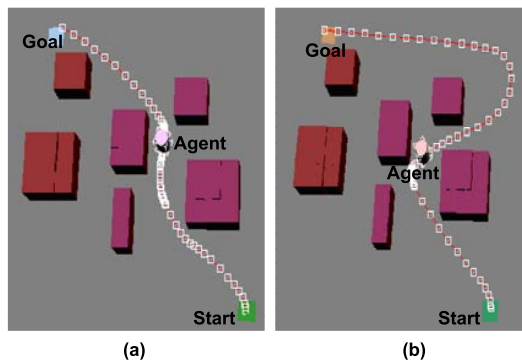


Fig. 4. Different Degrees of Optimism (a) $\sigma = 0.9$ and (b) $\sigma = 0.4$.

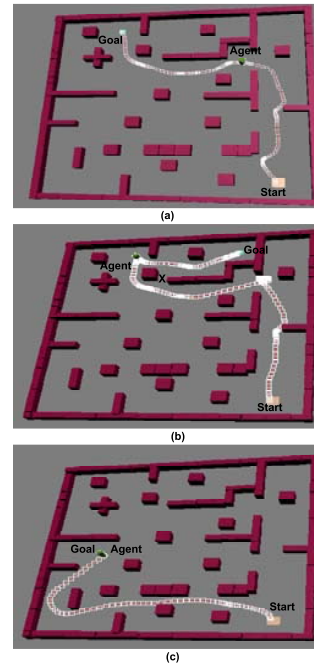


Fig. 5. Navigating in combination of cluttered and maze environment ($\sigma = 0.5$).

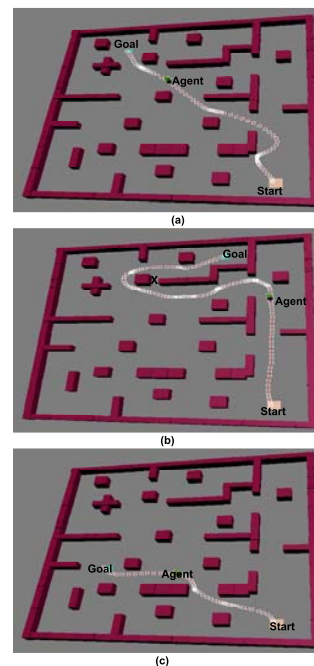


Fig. 6. Navigating in combination of cluttered and maze environment ($\sigma = 0.8$).

Based on result in Figure 4, using a higher value of σ will give a better result. A new value of $\sigma = 0.8$ has been selected. Figure 6(a) and (c) produce smooth and short paths compared to the results in Figure 5(a) and (c). In Figure 6(b), the virtual

agent follows a similar path compared to Figure 5(b) but with a small number of sharp turns. From the figures, we also notice that the virtual agent does not take the narrow path at **X**. One probable is that the passage is too narrow and might require a higher value of σ . However having a higher value of σ , the virtual agent might follow a longer and unsafe path.

Also in Figure 5(b) and Figure 6(b), notice that the virtual agent does not produce the shortest path. The virtual agent moves forward to the goal even though there are a walls and a dead-end. Then the virtual agent makes a left turn to escape from dead-end and follow the wall toward the goal. The virtual agent tried to reach the goal by moving straight ahead towards the goal by having a high value for Goal-Seeking behaviour. The virtual agent starts to switch to Path-Planning behaviour and Obstacle-Avoidance behaviour when it encounters an obstacle and needs to make a turn to reach the goal. This shows that the virtual agent has imitated how a human might make decisions during a navigation task in an unknown environment by making a good assumption that the path to the goal is ahead of them even though they cannot see the goal.

The experiment has shown that the σ value might vary depending on complexity of the environment. This is because some environments might have many narrow passages or two walls. With a high value of σ , the virtual agent can go through the narrow passage. Alternatively, with a low value of σ , the virtual agent might look for a wider passage. The paths produced might not be the shortest paths but they are safe paths (no collision). This is due to the ability of the virtual agent to identify its goal and the capability of the visual sensor in detecting potential obstacles.

A central issue in the design of reactive control architectures for autonomous virtual agents is the formulation of effective action selection mechanisms (ASMs) to coordinate the behaviours. Experiments will evaluate the Fuzzy-ASM method and compare the results with the behaviour fusion method (FBF) by Cang [33].

Four test cases have been used which are the virtual agent being moved from the same start point to different target points as in Figure 7 to 10 (Test Case 1, 2, 3 and 4). Figure 10 shows the example of the path produced by the virtual agent in Test Case 4. Figure 10(a) is the path produced by Cang's Method and Figure 10(b) shows the path produced by our Fuzzy-ASM. The path produced by the Fuzzy-ASM is shorter than Cang's method even though the smoothness of the path is similar.

Further testing has also been conducted with nine different goal locations. Figure 11 shows the result of (a) Time (t_n), (b) Distance (d_t), and (c) Decisions (K) taken by the virtual agent for all nine goal locations. The results show that Fuzzy-ASM has taken less time and a shorter distance to complete the task. The average percentages of Δt_n and Δd_t are 16% and 17.4%, respectively. When we compare the number of decisions made by each method, Fuzzy-ASM has made fewer decisions. The average number of decisions is 8.04% less than Wang's method. Fewer decisions leads to a faster and more reliable decision making process.

Our tests also show that the success rate for the Fuzzy-ASM is higher than Wang's method, as shown in Figure 12. Success

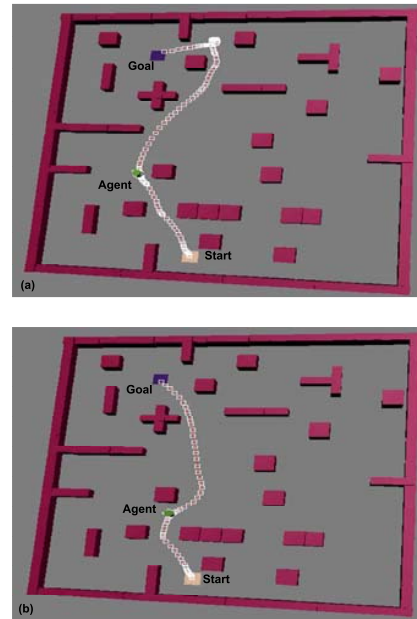


Fig. 7. Test Case 1

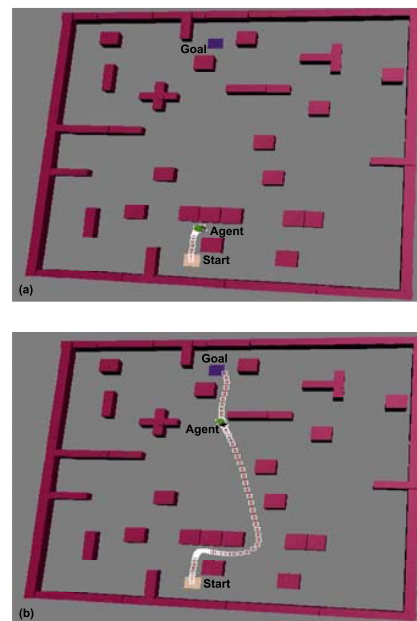


Fig. 8. Test Case 2

rate refers to the percentage of test runs (total of 25 runs) for each test where the virtual agent successfully reached the goal. In test 1 to test 4, the fuzzy ASM had a 100% success rate. Wang's method starts to decrease at test 2. The lowest success rate is 90% compared to Wang's method at 70%. This suggests that the Fuzzy-ASM is more reliable.

V. CONCLUSIONS

Our visual sensor had show that how information is captures in virtual environment and identifies which part of an obstacle

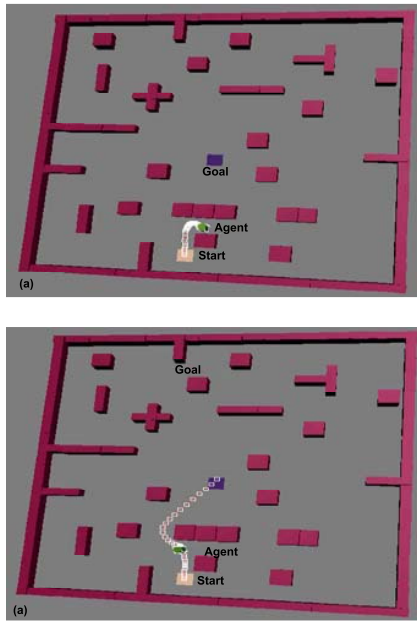


Fig. 9. Test Case 3

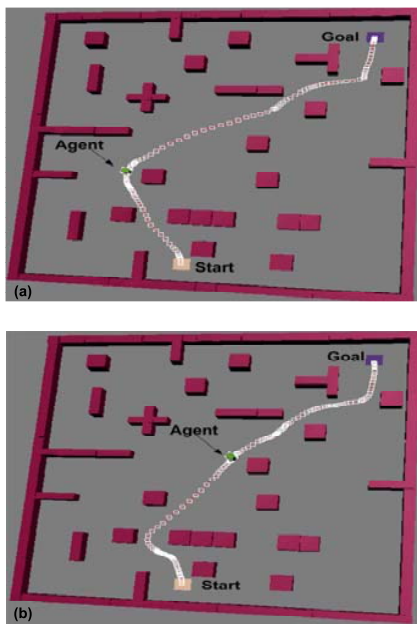


Fig. 10. Test Case 4

can be seen from the position of the virtual agent. Also, the visual sensor only identifies whether a square (cell) in the vision range is occupied by an obstacle or not. This information is critical for virtual agent in coordination its navigation task. The visual sensor also easy to integrate with our fuzzy controller. The evaluation results show that the virtual agent has deviated with minimum distance when avoiding the obstacles. The results also clearly demonstrate the mapping of inputs to output with a smooth path in a navigation task. This presents a natural way of dealing with a virtual

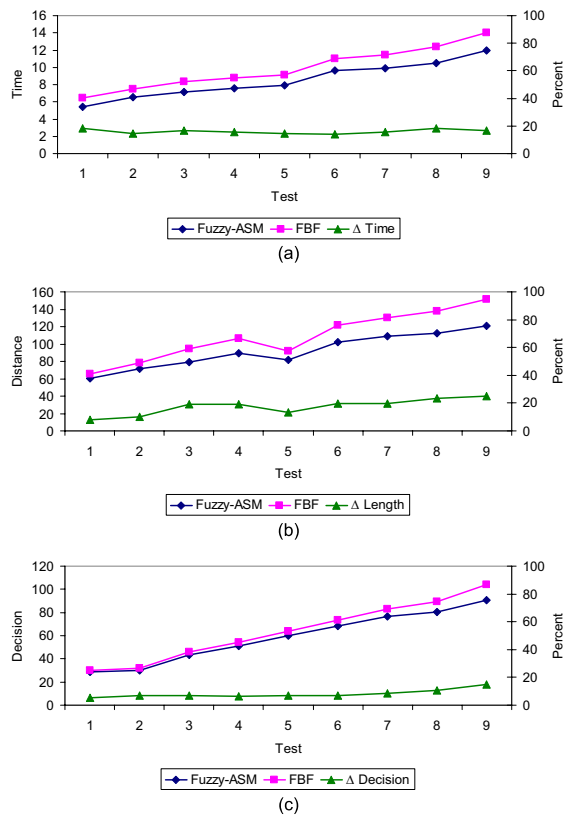
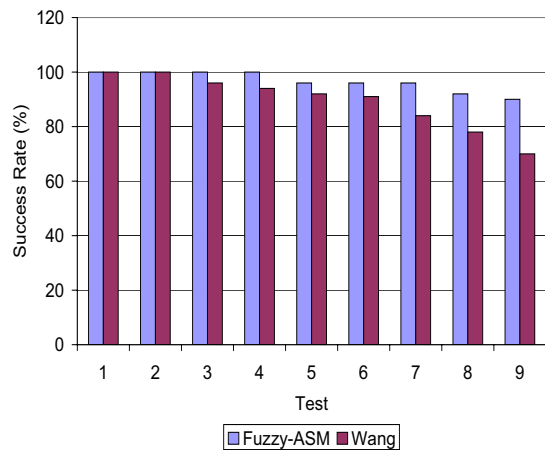
Fig. 11. (a) Time (t_n), (b) Distance (d_t) and (c) Decisions (K).

Fig. 12. Test Success Rate.

environment without having to use a complex mathematical model.

REFERENCES

- [1] R. P. Darken and J. L. Sibert, "A toolset for navigation in virtual environments," in *Proceedings of the 6th annual ACM symposium on User interface software and technology*, (Atlanta, Georgia, United States), pp. 157–165, ACM Press, 1993.

- [2] T. R. Wan, H. Chen, and R. Earnshaw, "Real-time path planning for navigation in unknown environment," in *Theory and Practice of Computer Graphics 2003 (TPCG 03)*, (Birmingham, UK), p. 138, IEEE Computer Society, 2003.
- [3] T. Y. Li, J. M. Lien, S. Y. Chiu, and T. H. Yu, "Automatically generating virtual guided tours," in *'99 Computer Animation Conference*, (Geneva, Switz), p. 99, IEEE, 1999.
- [4] S. Bandi and D. Thalmann, "Path finding for human motion in virtual environments," *Computational Geometry: Theory and Applications*, vol. 15, no. 1-3, p. 103, 2000.
- [5] P. Chaudhuri, R. Khandekar, D. Sethi, and P. Kalra, "An efficient central path algorithm for virtual navigation," in *International Computer Graphics (CGI04)*, (Crete, Greece), p. 188, IEEE, 2004.
- [6] M. Rook and A. Kamphuis, "Path finding using tactical information," in *Eurographics/ACM SIGGRAPH Symposium on Computer Animation (2005)* (K. Anjo and P. Faloutsos, eds.), (Los Angeles, USA), pp. 18–19, ACM SIGGRAPH, 2005.
- [7] M. Stilman and J. J. Kuffner, "Navigation among movable obstacles: Real-time reasoning in complex environments," in *4th IEEE-RAS International Conference on Humanoid Robots, 2004*, vol. 1, (Santa Monica, USA), p. 322, IEEE Inc., 2004.
- [8] F. Lamarche and S. Donikian, "Crowd of virtual humans: a new approach for real time navigation in complex and structured environments," *Computer Graphics Forum*, vol. 23, no. 3, pp. 509–518, 2004.
- [9] P. Tozour, "Search space representations," in *AI Game Programming Wisdom 2* (S. Rabin, ed.), USA: Charles River Media Inc., 2003.
- [10] Elusive, "Omicron bot," 1998.
- [11] B. Salomon, M. Garber, C. L. Ming, and M. Dinesh, "Interactive navigation in complex environments using path planning," in *2003 Symposium on Interactive 3D graphics*, (Monterey, California), pp. 41–50, ACM Press, 2003.
- [12] M. Lozano and J. Molina, "A neural approach to an attentive navigation for 3D intelligent virtual agents," in *2002 IEEE International Conference on Systems, Man and Cybernetics*, vol. 6, (Hammamet, Tunisia), p. 5, IEEE, 2002.
- [13] J. Velagic, B. Lacevic, and B. Perunicic, "A 3-level autonomous mobile robot navigation system designed by using reasoning/search approaches," *Robotics and Autonomous Systems*, vol. 54, no. 12, p. 989, 2006.
- [14] H.-S. Seo, Y. So-Joeng, and O. Kyung-Whan, "Fuzzy reinforcement function for the intelligent agent to process vague goals," in *Annual Conference of the North American Fuzzy Information Processing Society - NAFIPS*, (Atlanta, GA, USA), p. 29, IEEE, Piscataway, NJ, USA, 2000.
- [15] F. Wang, *Study of an Adaptive and Multifunctional Computational Behaviour Generation Model for Virtual Creature*. PhD thesis, University of Edinburgh, 2002.
- [16] M. Piaggio, A. Sgorbissa, G. Vercelli, and R. Zaccaria, "Autonomous robot navigation using a reactive agent," in *AI*IA 97: Advances in Artificial Intelligence*, p. 96, 1997.
- [17] J. J. Kuffner, *Autonomous Agent for Real-Time Animation*. PhD thesis, Stanford University, 1999.
- [18] F. Wang and E. McKenzie, "A multi-agent based evolutionary artificial neural network for general navigation in unknown environments," in *Third Annual Conference on Autonomous Agents*, (Seattle, United States), pp. 154–159, ACM Press, 1999.
- [19] G. Shafer, *A Mathematical Theory of Evidence*. Princeton, NJ: Princeton University Press, 1976.
- [20] Y.-C. Kim, S.-B. Cho, and S.-R. Oh, "The dempster-shafer approach to map-building for an autonomous mobile robot with fuzzy controller," in *2002 AFSS International Conference on Fuzzy Systems*, vol. 2275 of *Lecture Notes in Artificial Intelligence - Advances in Soft Computing*, (Calcutta, India), p. 40, Springer-Verlag, 2002.
- [21] B. Kosko, *Neural Networks and Fuzzy Systems: A Dynamical Systems Approach to Machine Intelligence*. New Jersey: Prentice-Hall inc., 1992.
- [22] J. Jaafar and E. McKenzie, "A reactive architecture for autonomous agent navigation using fuzzy logic," in *Artificial Intelligence and Soft Computing 2007*, (Palma de Mallorca, Spain), pp. 57–62, IASTED, 2007.
- [23] J. Jaafar and E. McKenzie, "Behaviour coordination of virtual agent navigation using fuzzy logic," in *International Conference on Fuzzy Systems (Fuzz-IEEE 2006)*, (Vancouver, Canada), pp. 1139–1145, IEEE, 2006.
- [24] T. J. Ross, *Fuzzy Logic with Engineering Application*. West Sussex: John Wiley & Sons, 2 ed., 2004.
- [25] L.-X. Wang, *A Course on Fuzzy System and Control*. London: Prentice-Hall International Inc., 1997.
- [26] P. Pirjanian and H. I. Christensen, "Behavior coordination using multiple-objective decision making," in *SPIE Conference on Intelligent Systems and Advanced Manufacturing*, (Pittsburgh, USA), 1997.
- [27] P. Maes, "How to do the right thing," *Connection Science Journal, Special Issue on Hybrid Systems*, pp. 291–323, 1989.
- [28] C. Huang, *A Study on The Fuzzy Ranking and Its Application on The Decision Support System*. PhD thesis, Tamkang University, 1989.
- [29] S. Mabuchi, "An approach to the comparison of fuzzy subsets with an alpha-cut dependent index," *IEEE Transactions on Systems, Man and Cybernetics*, vol. 18, no. 2, p. 264, 1988.
- [30] Y. Yuan, "Criteria for evaluating fuzzy ranking methods," *Fuzzy Sets and Systems*, vol. 43, no. 2, pp. 139–157, 1991.
- [31] F. Choobineh and H. Li, "An index for ordering fuzzy numbers," *Fuzzy Sets and Systems*, vol. 54, no. 3, p. 287, 1993.
- [32] T. Y. Chen and Y. T. Yu, "On the criteria of allocating test cases under uncertainty," in *Fourth Asia-Pacific Software Engineering and International Computer Science Conference (APSEC'97 / ICSC'97)*, (Hong Kong), p. 405, IEEE, 1997.
- [33] Y. Cang and W. Danwei, "Novel behavior fusion method for the navigation of mobile robots," in *2000 IEEE International Conference on Systems, Man and Cybernetics*, vol. 5 of *Proceedings of the IEEE International Conference on Systems, Man and Cybernetics*, (Nashville, USA), p. 3526, IEEE, 2000.