

# MABENA Strategic Management Model for Local Companies

Kaveh Mohammad Cyrus, Shadi Sanagoo

**Abstract**—MABENA model is a complementary model in comparison with traditional models such as HCMS, CMS and etc. New factors, which have effects on preparation of strategic plans and their sequential order in MABENA model is the platform of presented road map in this paper. Study review shows, factors such as emerging new critical success factors for strategic planning, improvement of international strategic models, increasing the maturity of companies and emerging new needs leading to design a new model which can be responsible for new critical factors and solve the limitations of previous strategic management models. Preparation of strategic planning need more factors than introduced in traditional models. The needed factors includes determining future Critical Success Factors and competencies, defining key processes, determining the maturity of the processes, considering all aspects of the external environment etc. Description of aforementioned requirements, the outcomes and their order is developing and presenting the MABENA model's road map in this paper. This study presents a road map for strategic planning of the Iranian organizations.

**Keywords**—Competitive Advantage, Process Maturity, Strategic Planning, Strategic potential

## I. INTRODUCTION

THIS paper is a template for an appropriate model for strategic planning. It has firstly presented by the time of the entrance of Iran to the world trade organization (WTO). With response to this request some efforts had done to recognize and apply the world strategic management models. By surveying the new models and some researches, some of the strategic management models were used. Every model had technical weaknesses and on the other hand deploying them needed special infrastructures and appropriate conditions. So, by the combination of the classic models such as BCG, SPACE, Porter, Portfolio, Freeman, Ronald Rosen, Philips, ADL and Pro, CMS model has been improved [1]. This model has been developed, presented and evaluated on 1997 and used for developing strategies for several Iranian organizations. Regarding to the existence of the newer key success factors for strategic models, increase in the maturity of the organization and new development on Iranian and international trade evolutions, CMS model improved to HCMS and finally MABENA model.

K.M. Cyrus is with the Industrial Engineering Department, Amirkabir University of Technology, Tehran, IRAN, (e-mail: cyrusk@aut.ac.ir).  
Phone: +9821 2276 6873-4; Fax: +9821 2254 0556

Shadi Sanagoo is studying MSc in Industrial Engineering Department, Amirkabir University of Technology, Tehran, IRAN.(e-mail: shadisanagu@gmail.com).

Our try is designing a comprehensive model which consider the success factors of the strategic management models In this paper first a comprehensive survey has been accomplished about all the models and the process of getting to the MABENA model is described by analyzing the industrial circumstances of Iran and at last this model is designed for the Iranian companies.

### A. History of the subject

Improvement of the CMS model has been the basis of this research. CMS model has been designed based on the analysis of some strategic models [1], considering the environmental aspects of industrial companies of Iran, in 1376. The results of the implementation of this model in industry has been presented in various reports. The CMS model needed doing 25 operational steps.

- 1) Studying the mission of the organization
- 2) Identification of goals and setting objectives Study and analysis of the external environment, using the PEST analysis
- 3) Study and analysis of the external environment, using the PEST analysis
- 4) Identification of opportunities and threats
- 5) Strategic group analysis in order to to evaluate the position of the organization comparing to competitors.
- 6) Study and analysis of the internal environment
- 7) Obtaining the strengths and weaknesses of the
- 8) Vulnerability analysis
- 9) Forming the evaluation matrix (IEFE)
- 10) Study of the internal strategic position
- 11) Study of the external strategic position
- 12) Formation of the SPACE diagram
- 13) Measurement and analysis of the productivity indicators
- 14) Determination of the position of the organization in the lifecycle diagram.
- 15) Determination of the position of the organization in the portfolio lifecycle.
- 16) Making strategies and action plans using the ADL matrix .
- 17) Strategy formulation using the SWOT matrix .
- 18) Gathering premiere strategies resulted from the ADL matrix.
- 19) Making ETOP table, in order to predict the future trend of external factors

- 20) Study of the effects of environmental trends on the selected strategies
- 21) Making SAP table, in order to predict the future trend of internal factors.
- 22) Evaluation of the selected strategies, considering the future trends of internal factors
- 23) Prioritization of the strategies using the QSPM method.
- 24) Presenting the final strategies.
- 25) Developing action plans for executing strategies

By considering the researches which has been done regarding the models and the trend of globalization of national companies, is the need of the CMS model for improving the current components of adding new ones. Fulfilling this need is done by identifying components, factors, stages and new formulations. Consequently, a new model has been developed as a result of this improvement, which is called the HCMS model.

#### B. CMS model improvement

In order to improve CMS model, the success factor of the nowadays strategic management were studied. Some of them presented below:

- Recognizing right bottlenecks in achieving the goals.
- Considering all excellence aspects in setting strategies.
- Reflection of believes, thoughts and senior managers values in setting strategies.
- Considering life cycle of the organization in setting competitive strategies
- Notifying the ability of the performance appraisal (implementation aspect) in strategic model
- Considering all stakeholders in setting strategies
- Economical and scientific society infrastructures

After considering the strengths and weaknesses of strategic management models, CMS model improved to HCMS model.

The improvement trend of the CMS model presented below:



Fig. 1 CMS model improvement trend

The HCMS model has defined in 4 basic area and 12 steps.

These four areas are:

- 1- Identification and preparation
- 2- Recognizing internal and external environment
- 3- Identifying and setting goals and strategies
- 4- Identifying action plans, projects and KPIs

1-Identification and preparation:

- 1-1 -forming steering committee
- 1-2 -Identifying the current status of the organization with strategic view and Writing the value principles

1-3- editing mission and vision of the organization, Which show the main reason of existence of the organization and determines the direction of the strategies.

1-4- Identifying the critical success factors by using CSF method and identifying the capabilities and achievable competencies.

2-Recognizing internal and external environment

2-1- Study and analysis of the internal environment, in order to examine the internal factors of the organization by using the EFQM model, life cycle analysis and functional analysis of the organization.

2-2- Study and analysis of the external environment, using the PESTLE analysis, the position of the organization studied regarding economical, political, legal, socio-cultural, technological and environmental factors in order to recognize remote environment, analysis of the close environment by porter model and also analysis of the stakeholders.

3-Identifying and setting goals and strategies

3-1-determining the aspects of balanced score card through identifying goals and objectives, strategies and tactics.

3-2- designing the strategy map and goal map

3-3- selecting and prioritizing the strategies

4- Identifying action plans, projects and KPIs

4-1- defining key performance indicators for strategic goals

4-2- determining the targets and project or action plan

4-3- prioritizing and planning for projects

4-4- designing the chart top

Nowadays, companies for entering the global competitive aspects need to recognize more.

Researches improved that Missions are presented totally different from their traditional definitions. Opportunities and threats change drastically. Strengths and weaknesses need new definitions at any point of time, and their combination for achieving strategies needs different formulation.

Examining the article shows that, evaluating the performance of strategies, determining the importance of different competitive alternatives and evaluation of competences, much work hasn't been done, so it necessitates more research on the subjects mentioned above.

Considering the researches done regarding the models and the trend of globalization of national companies, is the need of the HCMS model for improving the current components of adding new ones. Fulfilling this need is done by identifying components, factors, stages and new formulations, which are presented in the following pages. Consequently, a new model has been developed as a result of this improvement, which is called the MABENA model.

#### C. HCMS model improvement

By studying and surveying, the HCMS model improved to MABENA model. In MABENA model the sequence of the steps which had been done in HSMS model changed and also some features which appeared necessary were added.

MABENA model consist of 6 areas:

- 1- Identification and strategic analysis
- 2- Determining vision and mission
- 3- Identifying Strategies and goals
- 4- Analysis and diagnose Key processes
- 5- Designing the balanced scorecard
- 6- Creating infrastructure for deployment

Features which have changed in different areas of the MABENA model are:

*1-Identifying the mission and vision and valuable principles:*

It is necessary to note that in MABENA model regarding to the fact that vision shows the understanding of the organization against the stakeholders (customers, employees, community and shareholders), identifying the vision of the organization will be done after the internal and external analysis. On the other hand, regarding the fact that missions are determined based on the strengths and capabilities of the organization and needed indentifying the future opportunities in order to deciding for the future and also the customers, competitors, geographic area, future market of the company and the future challenges are affected the missions, therefore determining the missions will be done after the internal and external analysis [20].

*2-Determining the competencies and critical success factors in current and future situations:* Various resources have explained the critical success factors, such as [20]-[24]. Since, by improving the event tree consideration, the role of CSFs has become more important, and in the previous model, identification of the future critical success factors did not exist. The organization should perform well at some key levels to reach its mission. These key levels are exclusively for the industry in which the organization competes. They can be called the critical success factors (CSFs) of the organization. In the traditional models of management and strategic planning, the definition and concept of the future CSFs, strategic potential, competitive advantage and in summary comparing our abilities against competitors are not mentioned directly. On the other hand, Different resources have explained the core competencies and their relationship with internal factors, for example [30]- [33], [35]. In HCMS model at the time of indentifying the critical success factors, the core competencies are indentified by using the porter model based on the strategies and organization capabilities in order to determine the appropriate strategy for improve, eliminate or retain the abilities and capabilities of the organization regarding to the circumstances of the organization and market. In MABENA model extracting these competencies have done after determining the goals and strategies and also in this model by indentifying the general success factors and their importance level of them, the competencies and bottlenecks of the organization has identified and after comparing them with competitors, the competitive advantages, strategic commitments, strategic potential and strategic weaknesses will extracted.

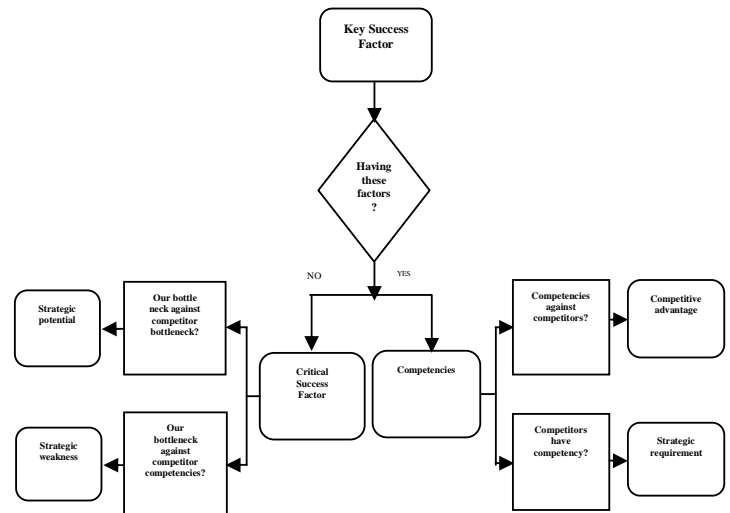


Fig. 2 Determining the competencies and critical success factors

*3-Analyzing the internal factors:*

Various references have explained the internal factors such as [11]- [14]. Identifying and analyzing the internal factors of the organization in the strategic planning process done in order to identify the strengths and weaknesses and the ways of improvement. This action prepares the basis for SWOT analysis and gaining the related strategies. knowledge resulted from the study of internal factors [11]- [14], [35].

Three approaches for internal factors analysis were found:

- functional analysis
- life cycle analysis
- competency and critical success factors analysis

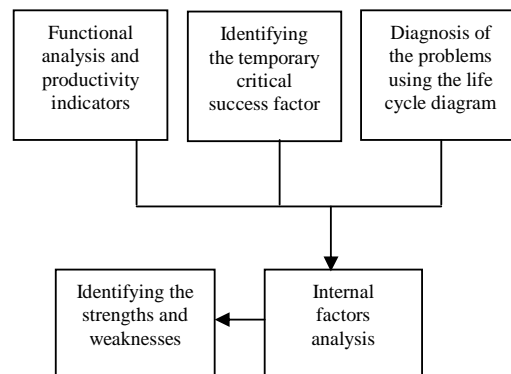


Fig. 3 internal factors analysis

As mentioned in reference [35], one of the essential construct of internal factor is related to competencies better than competitors, so in MABENA model the temporary critical factors have considered. The result of the studies was the improvement of the functional factors of the both approaches, by adding new parameters, in a way to meet the internal factors by the functional view. The concentration of this study was on the addition of core competencies and critical success

factor analysis for the internal factors analysis. In HCMS model internal factors analysis has done by using EFQM, functional analysis and life cycle.

In MABENA model EFQM uses for identifying the current situation of the organization and identifying the critical success factors is used in recognizing the strengths and weaknesses of the organization.

#### 4-Analyzing the stakeholders:

Stakeholders are important part of the environment factors. Different references have explained environmental factors [9]-[10].

Also, various references have explained the stakeholders [15] - [19], [34], [35]. "Stakeholders", are people or groups which for achieving part of their goals or needs, are dependent on the organization, and in a way the organization is also dependent upon them.

It is notable that paying attention to managing a specific set of stakeholders will have a powerful effect on achieving strategic goals and long-term viability [8].

An important dual aim of the organization is to both identify and manage those stakeholders who are important for the specific organization's strategic future.

To achieve this, focusing on a series of linked such below are necessary:

\_Identifying who the stakeholders really are in the specific situation (rather than relying on generic stakeholder lists). Recognizing the uniqueness of an organization's context and its goals allows managers to identify specific stakeholders and be clear about their significance for the future of the organization [8].

\_Exploring the impact of stakeholder dynamics; acknowledging the multiple and interdependent interactions between stakeholders and potential stakeholders [8].

\_ Developing stakeholder management strategies; determining how and when it is appropriate to intervene to alter or develop the basis of an individual stakeholder's significance, which itself is determined through in depth consideration of stakeholder's power to, and interest in, influence the organization's direction.[8]

By doing researches about the concept of the stakeholders, the need for the more precise and structured stakeholders analysis in the strategic planning process, was revealed.

In HCMS model analysis of stakeholders has been done in three stages:

1- Determining key stakeholders. 2- Determining the key expectations. 3- Classifying and determining the method for behaving with them

In MABENA model after the 3 stages mentioned, stakeholders are classified by power and tendency level. Then some strategies will be presented for managing them.

The model, which used for identifying key stakeholders of the organization, shown in Fig 4:

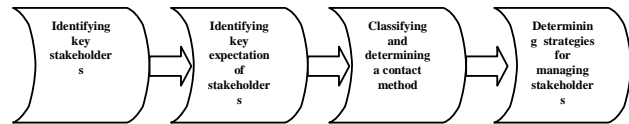


Fig. 4 stakeholders' identification

On the other hand, due to the convenience of this model in the analysis of the remote and close environment, it was decided to use this model for the analysis of the environment as a complementary part for the PEEST and Porter model.

Some parameters for estimating political, economical, social, cultural, analysis were changed and added (to the extent to do more precise estimations). Moreover, cultural, aesthetical, customers and sectored seems necessary to consider in environmental factors. So in the MABENA model, it has tried to act precisely by updating mentioned factors.

After studying and doing researches, levels and expected results of the analysis of the environment of the organization for the MABENA strategic planning factors are presented in Fig 5:

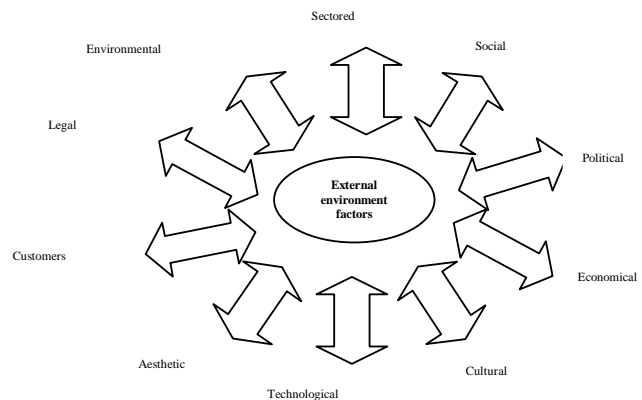


Fig. 5 external factors analysis

#### 5- Designing the balanced score card:

Various references have explained the balanced scorecard [3]- [4], [25], [29], [30], [37]- [39].

The Balanced Scorecard are one of the most important and common systems of performance measurement. As a result, if we want to clarify the position of the criteria for performance measurement in the model, we use it as a tool for quantifying the goals and converting them into objectives, we use the critical success factors and goals setting in the form of the balanced scorecard framework in the strategic planning model.

The BSC proposal applies the goal question (Indicator) measurement methodology to derive quantitative sub-objectives from strategy objectives allocated in the quadrants of the BSC [3].

In HCMS model, determining the balanced scorecard aspects is done through determining the goals and objectives and setting the strategies and tactics.

The most strength point of BSC is its ability to illustrate the cause and effect relations between strategies and processes through four perspectives [34].

In MABENA model, [2] the results of the implementation of BSC included the strategy maps and the KPIs, designing the balanced score card will be done after identifying the key performance indicators and strategy map and key processes. Fig 6 shows the BSC aspects:

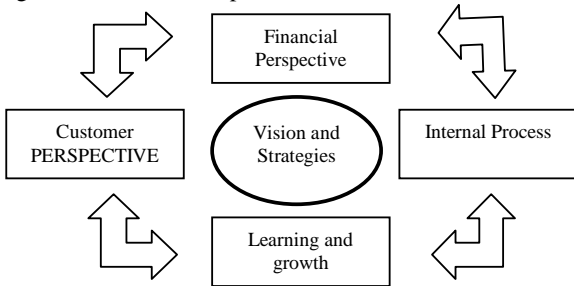


Fig. 6 Kaplan and Norton BSC Perspective

6- Methods for determining the strategies and solution:

In MABENA model for determining the short term and long term strategies, several methods are used.

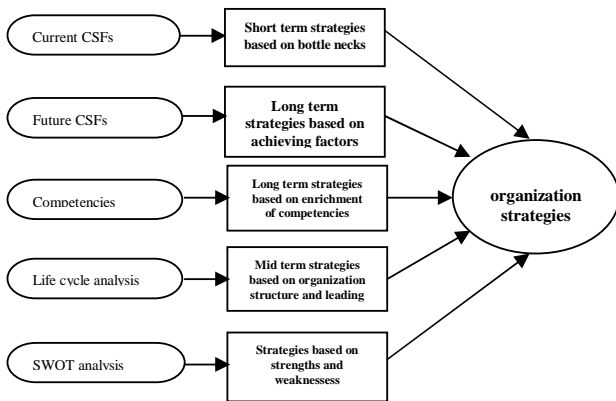


Fig. 7 determining strategies and solution

7-Analysis and diagnosis of the key processes

Different references have explained process maturity, that some are mentioned here [3],[5],[6]-[7],[40].

One of the difficulties in formulating the strategy quantitatively is to link the strategic or business objectives with the product and process measurements and the expected values for improvement based on an appropriate analysis of the current situation [3].

One important reason for the failure of measurement program implementation is that the maturity of companies as regards measurement has not been taken into account during the definition phase [5].

The maturity capability level of the organization (N) Suggested measurement goals that the company is ready to implement according to its measurement maturity. The measurement goals which belong to level N+1 should be implemented with care, and the implantation of measurement goals related to higher measurement maturity levels is not recommended [5].

If one accepts that enterprise business process management [EBPM] is essentially about improving performance, it may even be a misnomer to talk about 'Process Maturity.' After all, neither wisdom nor skill necessarily accompanies maturity. If it is performance that really counts, then we need to go beyond maturity to look at how an organization develops business process competence [6].

In MABENA model identifying and diagnosing the key processes is an important area. In this model after identifying the key processes, they diagnose by using the maturity model and the gaps will be identified.

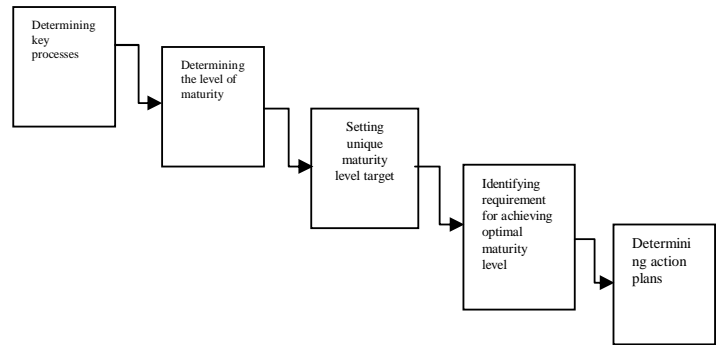


Fig. 8 determining key processes

Description of the MABENA diagram

The MABENA model roadmap presented in Fig 9. This roadmap is drawn in the form of separate, but related elements, which show the strategic planning process in the MABENA model from the very beginning to the end.

REFERENCES

- [1] Kaveh. M. Cyrus; S. M. Moattar Hosseini; A. Seifi; "Strategic Plan's Road Map for Iranian Companies", Amirkabir Journal of Science and Technology (2006),
- [2] Hamid Tohidia , Aida Jafarib, Aslan Azimi Afsharb, "Strategic planning in Iranian educational organizations", Procedia Social and Behavioral Sciences (2010),
- [3] Arash Najmaeii ,Macquarie Graduate School of Management, Sydney, Australia, "STRATEGIC MANAGEMENT OF STRATEGIC INNOVATION", (2010)
- [4] Javier Garcí a Guzmá n, Hugo A. Mitre, Antonio Amescua, Manuel Velasco, "Integration of strategic management, process improvement and quantitative measurement for managing the competitiveness of software engineering organizations", Springer Science, (2010)
- [5] Serkan Tu` rkeli, Mehmet Erc` ek, "Designing a Capability-Focused Strategic Management Model for a Turkish Public Hospital: Learning from Failure", (2010)
- [6] Maia Diaz-Liy a, Félix Garcia b, Mario Piattini, "MIS-PyME software measurement capability maturity model – Supporting the definition of software measurement programs and capability determination", (2010).
- [7] Haryanto Tanuwijaya1 and Riyanarto Sarno, "Comparison of CobiT Maturity Model and Structural Equation Model for Measuring the Alignment between University Academic Regulations and Information Technology Goals", (2010).
- [8] Rogier van de Wetering · Ronald Batenburg Reeva Lederman, Evolutionistic or revolutionary paths? A PACS maturity model for strategic situational planning, (2010).
- [9] Fran Ackermann and Colin Eden, "Strategic Management of Stakeholders: Theory and Practice", (2010), Elsevier
- [10] Stead, W.E.; STRATEGIC DECISION MAKING AND THE ENVIRONMENTS, Sage Publications, 1996.
- [11] Environmental Scanning; "THE BETTER MANAGEMENT PRACTICES", Council on the Cost and Quality of Government, NSW Premier's Department, www.ccqg.nsw.gov.au, May 2004.
- [12] Zon M.R.; "CORPORATE SOCIAL RESPONSIBILITY, EFQM EXCELLENCE MODEL", University of ULSTER, www.ulster.ac.uk, 2001.
- [13] Härje F.; "MANAGEMENT QUALITY AND THE GOOD WORK-PLACE", Knowledge- Base Web- Directory, www.themanager.org, February 2004.
- [14] Härje F.; "MANAGEMENT QUALITY AND LEARNING ORGANIZATIONS", Knowledge- Base Web- Directory, www.themanager.org, 2001.
- [15] Finalay, P.N.; STRATEGIN MANAGEMENT: AN INTRODUCTION TO BUSINESS AND CORPORATE STRATEGY", Pearson Education, 2000.
- [16] Weiss J.W.; BUSINESS ETHNICS: A STAKEHOLDERS AND ISSUES MANAGEMENT APPLICATIONS, Southwestern Publications, 2002.
- [17] Frost, F.; GENERIC PROMOTION OF DAIRY PRODUCTS: A STAKEHOLDER PERSPECTIVE, School of marketing. Curtin university of Technology, 2001.
- [18] Mintzberg, H.; "STAKEHOLDER MANAGEMENT", Dagmar Recklies, www.themanager.org, April 2001.
- [19] Marr J.W. & Walker, S.; STAKEHOLDER POWER, Perseus Books Group, 2001.
- [20] Kelsey, K. D.; "WHO ARE YOUR STAKEHOLDERS?" AGED 6224, Lesson4, 2002.
- [21] Bryson, J.M. & Bromiley, P.; "CRITICAL FACTORS AFFECTING THE PLANNING AND IMPLEMENTATION OF MAJOR PRODUCTS", Strategic Management Journal 14, no. 5, July 1993.
- [22] Freund, Y.; "CRITICAL SUCCESS FACTORS", Planning Review 16, no. 4, July- August 1998.
- [23] Chrusciel, D. & Field, D.W.; "FROM CRITICAL SUCCESS FACTORS INTO CRITERIA FOR PERFORMANCE EXECELLENCE", The Official Electronic Publication of National Association of Industrial Technology, 2001.
- [24] Caralli, R.A.; "THE CRITICAL SUCCESS FACTOR METHOD: ESTABLISHING A FOUNDATION FOR ENTERPRISE SECURITY MANAGEMENT", July 2004.
- [25] Recklies, O.; "VISION AS KEY FACTOR IN MERGER PROCESSE S", Oliver Recklies, www.themanager.org, May 2001.

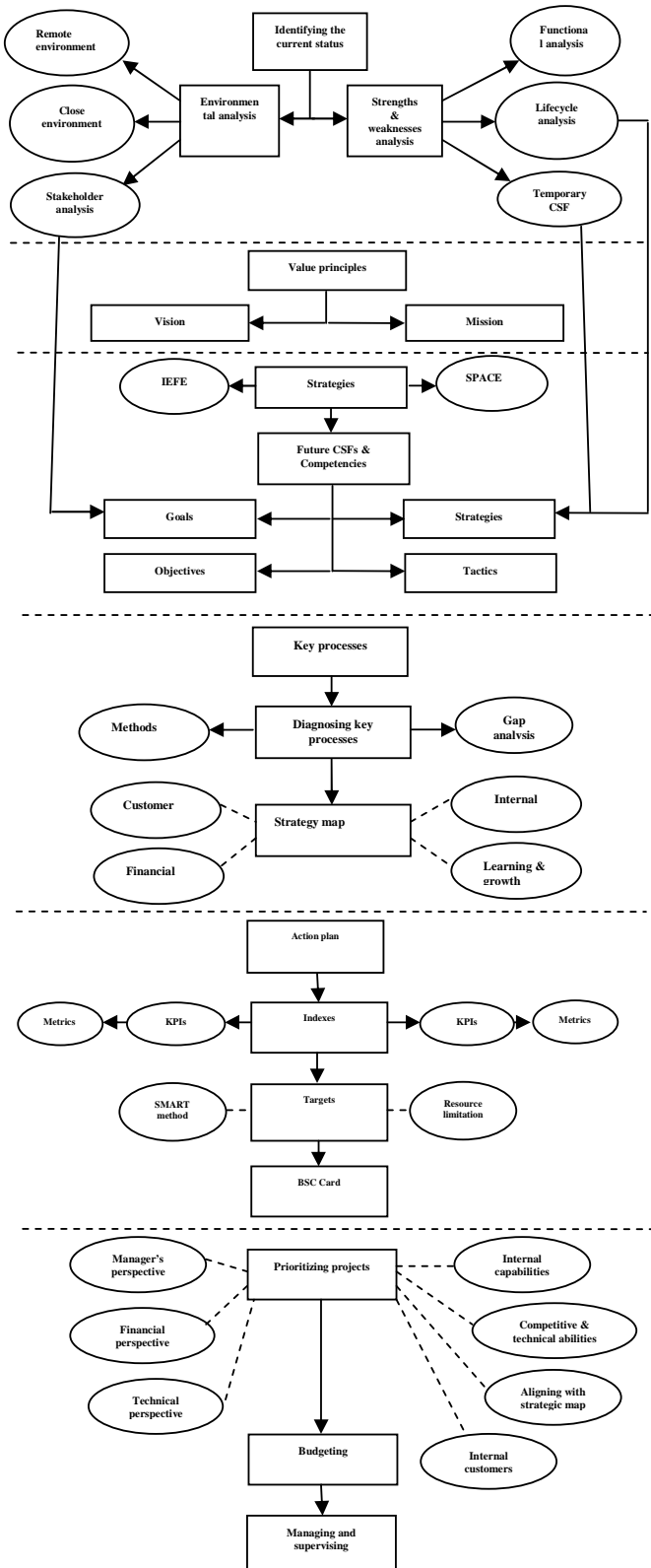


Fig. 9 MABENA model roadmap

- [26] Jacqueline Coolidge, Marc Meunier, Eric Klein; "Caution: Dashboards and Scorecards Are Highly Addictive", AMR Alert, <http://www.corvu.com>, January 6, 2005.
- [27] "Guidelines for Implementing Balanced Scorecard", QPR, Feb 2004.
- [28] Robert S. Kaplan, David P. Norton; "The Balanced Scorecard: Measures That Drive Performance", HBR On Point Enhanced Edition, 1998.
- [29] Kaplan R. S. and Norton D. P.; "The balanced scorecard: measures that drive performance", Harvard Business Review Jan- Feb 1992.
- [30] Robert S. Kaplan, David P. Norton; "The Balanced Scorecard: Translating Strategy into Action", Harvard Business School Pr, September 1996.
- [31] American productivity and quality center, planning, organizing, and managing benchmarking activities; "A USER GUIDE", Houston (1992).
- [32] Javidan, M.; "CORE COMPETENCY: WHAT DOES IT MEAN IN PRACTICE?", Long Range Planning, Vol. 31, No1, (1998).
- [33] Coyne, K.P. & Hall, S.J.D. & Clifford, P.G.; IS YOUR CORE COMPETENCY A MIRAGE?, Mckinsey Quarterly. (1): 40-54. 1997.
- [34] Amit, R. & Schoemaker, P.J.H.; "STRATEGIC ASSET AND ORGANIZATIONAL RENT", Strategic Management Journal Jan, (1993).
- [35] Alexandros Papalexandris, George Ioannou\_ and Gregory P. Prastacos, "Implementing the Balanced Scorecard in Greece: a Software Firm's Experience", Elsevier (2004)
- [36] Andrew Spanyi, "Beyond Process Maturity to Process Competence" (2004)
- [37] Hassan Danaee Fard & Asghar Moshabbaki & Tayebeh Abbasi & Akbar Hassanpoor, "Strategic Management in the Public Sector: Reflections on It's Applicability to Iranian Public Organizations", (2010)
- [38] Kathleene. Voelker, Jonathon S. Rakich, and G. Richard French, "The Balanced Scorecard in Healthcare Organizations: A Performance Measurement and Strategic Planning Methodology", (2001).
- [39] M. D. Nayeri, M. M. Mashhadi, and K. Mohajeri, "Universities Strategic Evaluation Using Balanced Scorecard", (2008).
- [40] A. Saghaei, R. Ghasemi, "Using Structural Equation Modeling in Causal Relationship Design for Balanced-Scorecards' Strategic Map", (2009).

**Kaveh Mohammad Cyrus :** Kaveh M. Cyrus was born in Tehran, Iran, in 1953. He received the Ph.D degree in Industrial Engineering (Major in Strategic Management) in AmirKabir University of Technology, Tehran, Iran in 2006. He received E.D degree in Industrial and Systems Engineering (Major in Systems Engineering) in the University of Southern California (USC), Los Angeles, USA, in 1983. He received M.S degree in Industrial and Systems Engineering (Major in Operations Research) in University of Southern California (USC), Los Angeles, USA in 1980. He received B.S degree in Industrial Engineering (Major in Systems Analysis and Planning) in Sharif University of Technology, Tehran, Iran in 1978. He is Director Manager of the Mabena Company (Management and Planning for Industry and Energy) and also Tenure Assistance Professor in Director Engineering Management Dept of Amirkabir University of Tech. Other work experiences are include director of the Pars Engineering Management Research Center, managing Strategic Planning projects for Raja Rail Road passenger train Organization, National Petrochemical Research and Technology Company, Khowzestan Water & Power Organization, Pegah (Holding) Dairy Production and Distribution Company, Tooklan-Toss (Holding) Auto-parts Manufacturing Company, Sina Tile Production Company, Tide-Water Middle-East (Multi purpose) Marine Services Company, Darupakhsh Medicine Production Company, I.R.I.T.E.C. Consulting Firm, Enerchimi Consul ting Firm, Shahid Rajaie Power Plant, Abguineh Glass Production Company. He has Published three books related to Strategic Management, many papers and articles regarding above mentioned subjects in International magazines, Conferences and Seminars. He has also developed and published a competitive model for local companies' and organizations' strategic planning facing country entering WTO (World Trading Organization). Dr Kaveh M. Cyrus is Chairman of the Board in Iran Management Association and is a co-founder and one of first Board of Directors' members Of Iranian Society of Industrial Engineering. He is one of the members of the Iranian Society of Aeronautical and Space Engineering. Office: No.8, E. Arya Alley, Gheitarieh Dd., Rahmani Brothers St., Kholahdoz Ave., Postal Code: 19399-34551, Tehran, Tel/fax (021) 22540556, Tel (021) 22766873,4 [www.aut.ac.ir/cyrusk](http://www.aut.ac.ir/cyrusk), [cyrusk@aut.ac.ir](mailto:cyrusk@aut.ac.ir); [cyrusk@mabena.com](mailto:cyrusk@mabena.com)

**Shadi Sanagoo:** Shadi Sanagoo was born in Tehran, Iran, in 1982. She received the B.Sc. degree in Industrial Engineering (Major in Systems Analysis and Planning in Mazandaran University of science and technology, Babol, Iran in 2005. She is currently working forward M.SC. degree at Amir Kabir university Tehran, Iran. She is working as a planning and development senior expert in Sina Electronic Development company (ICT holding). Her fields of work include managing Strategic Planning projects, analyzing business plans and business models, project management, economical and financial analyzing and writing annual budgets for the Islamic Revolution Mostazafan Foundation companies. Her previous work experience was quality assurance expert in Master company, project control expert in Rapalo company, system analyser in Behran oil company and doing summer jobs in Iran khodro and Isaco companies. Shadi Sanagoo is one of the members of the Iranian Society of Industrial Engineering .