

Load Modeling for Power Flow and Transient Stability Computer Studies at BAKHTAR Network

M. Sedighizadeh, and A. Rezazadeh

Abstract—A method has been developed for preparing load models for power flow and stability. The load modeling (LOADMOD) computer software transforms data on load class mix, composition, and characteristics into the form required for commonly-used power flow and transient stability simulation programs. Typical default data have been developed for load composition and characteristics. This paper defines LOADMOD software and describes the dynamic and static load modeling techniques used in this software and results of initial testing for BAKHTAR power system.

Keywords—Load Modelling, Static, Power Flow.

I. INTRODUCTION

LOAD characteristics have long been known to have a significant effect on system performance, and transient stability results are known to be highly dependent upon the load characteristics assumed [1]. Because of the uncertainty of the actual load characteristics utilities have attempted to use characteristics that would lead to conservative designs. It has been shown, however, that there is no single load characteristic that leads to a conservative design for all system configurations [2]. It has become clear that assumptions regarding the load model can impact predicted system performance as significantly as the models chosen for excitation systems and synchronous machines, which have received greater industry attention. Several efforts have been made to develop methods for constructing improved load models [3]. One of the methods demonstrated the validity of a load modeling process based on the components that make up the load and the individual voltage and frequency characteristics of these components.

In 1984, EPRI contracted with General electric, to develop production – grade computer programs and documentation that would provide an easy way for load modeling, this has been accomplished by the development of the load model synthesis (LOADSYN) computer program package, which permits the user to develop load models for his system with a minimum amount of data on the system loads, simply the mix

of various classes, e.g., residential, commercial, industrial. Because this software has been disadvantage, therefore, we reprogrammed its algorithm with new properties by Delphi language and it named “LOADMOD”. This software is very user friendly that in this paper will be explained later.

II. LOAD MODELING PHILOSOPHY

Two main approaches to load model development have been considered by the electric utility industry: “measurement – based” and “component – based”.

The measurement-based approach involves placing monitors at various load substations to determine the sensitivity of load active and reactive power to voltage and frequency variations [4] to be used directly or to identify parameters for more detailed load models [5]. This approach has the advantage of direct monitor primarily consist of a general load model (A), CYME load model (B) and constant impedance load model (C).

The response of active and reactive power for this bus following loss one of transmissions lines is shown in Fig. 11 and Fig. 12 respectively. In two figures, power is given in perunit on a 100 MVA base and voltage is given in p.u. based on nominal voltage.

It was found that simplified models A and B are suitable for application in voltage stability studies; whereas model C does not capture the dynamic state change adequately giving wrong predictions on voltage stability behaviour. Owing of the true load can produce load model parameters directly in the form needed for power flow and transient stability program input. Its disadvantages include the cost of acquiring and installing the measurement equipment and the need to monitor all system loads or to extrapolate from limited measurements. The measurements must also be repeated as the load changes due to seasonal and other factors.

The component-based approach [6], which was pursued in this paper, involves building up the load model from information on its constituent parts, as illustrated in Fig. 1. For these methods three sets of data are required: Load class mix data, Load composition data, Load characteristics data.

The component-based approach has the advantage of not requiring system measurements and therefore being more readily put into use. Since load characteristics and load composition data should not vary widely over a particular system, they can be developed once for the entire system.

Manuscript received October 6, 2007

Authors are with Faculty of Electrical and Computer Engineering, Shahid Beheshti University, Tehran, 1983963113, Iran (phone: +98-21-29902290; fax: +98-21-22431804; e-mail: m_sedighi@sbu.ac.ir).

Only the load class mix data needs to be prepared for each bus or area, and updated for changes in the system load.

Component – based load modeling is divided into two main groups: static and dynamic modeling. These groups are explained in following sections:

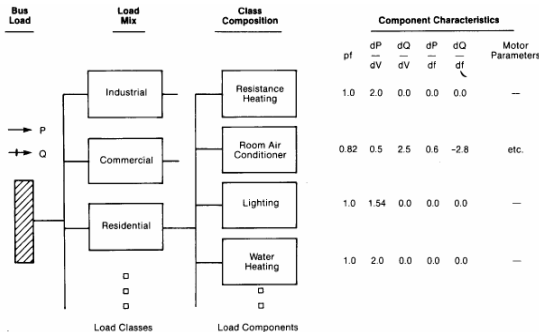


Fig. 1 Component – based load modeling

III. STATIC AGGREGATION

In developing an aggregate static model, the sensitivity factors of the individual load components are aggregated into values that can be used as exponents in the following “general load model”:

$$\frac{P}{P_0} = P_{al} \left(\frac{V}{V_0} \right)^{KPV1} (1 + KPF1 \Delta f) + (1 - P_{al}) \left(\frac{V}{V_0} \right)^{KPV2} \quad (1)$$

$$\frac{Q}{P_0} = Q_{al} \left(\frac{V}{V_0} \right)^{KQV1} (1 + KQF1 \Delta f) + \left(\frac{Q_0}{P_0} - Q_{al} \right) \left(\frac{V}{V_0} \right)^{KQV2} (1 + KQF2 \Delta f) \quad (2)$$

The parameters in this formula are defined follows:

P_{al} – frequency dependent fraction of active power load.

$KPV1$ – Voltage exponent for frequency dependent active power load.

$KPV2$ – Voltage exponent for non-frequency dependent active power load.

$KPF1$ – frequency sensitivity coefficient for active power load.

Δf – per unit frequency deviation from nominal.

V – per unit voltage magnitude at the bus.

V_0 – initial voltage magnitude from power flow base case.

P_0 – initial bus load active power, from power flow base case.

Q_{al} – reactive load coefficient – ration of initial uncompensated reactive load total to initial active power load P_0

$KQV1$ – Voltage exponent for the uncompensated reactive power load.

$KQF1$ – frequency sensitivity coefficient for uncompensated reactive power load.

$KQV2$ – Voltage exponent for reactive compensation term.

$KQF2$ – frequency sensitivity coefficient for reactive compensation.

Q_0 – initial bus load reactive power, from power flow base case.

The aggregation of the static load models involves the following steps:

- 1- Determine the bus load composition, i.e., the fraction of each component at a particular bus (or zone or area), by combining the load class mix and the class composition data.
- 2- Use the bus load composition fractions as weighting factors to compute a weighted average of the individual component sensitivity factors.

IV. DYNAMIC AGGREGATION

Model 1: The motor components are aggregation into a single dynamic induction motor model, using the standard equivalent circuit shown in Fig. 2.

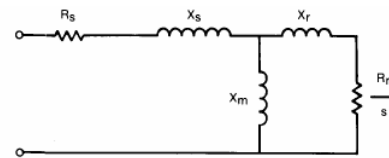


Fig. 2 Induction motor model

The mechanical load torque is represented as the following polynomial function of motor speed:

$$T_M = T_{MO} (A \omega_m^2 + B \omega_m + C) \quad (3)$$

The acceleration of the motor is represented by:

$$\omega_m = 1/2H [T_M(\omega) - T_E(S)] \quad (4)$$

where T_E is the electrical torque, which is a function of the motor slip, s . The motor is disconnected if the bus voltage stays below V_T for longer than T_I seconds. Motor parameters are aggregated and presented in [7].

Model 2: Because diversity in motors rating is very wide in industrial centers, therefore it is better for increase in accuracy of modelling, we present dynamic load model with two motors. The relevant equations for calculating electric parameters of the two – motor model have been developed and presented in [7]. The motor model has been developed and presented in the flow chart of Fig. 3.

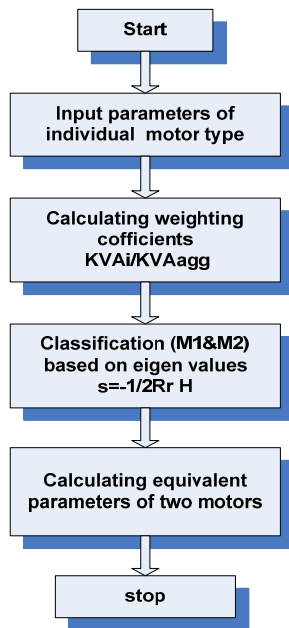


Fig. 3 Flow chart for motor separation based on eigen values method

V. LOAD MODELING COMPUTER PROGRAM

The load modeling program package (LOADMOD) that has been defined in this paper, has following advantages in contrast to (LOADSYN) package:

- ✓ Common graphic user interface
- ✓ Integrated data base editor and manager for all kinds of data
- ✓ flexible enough to be directly applicable to utility-type load and industrial three-phase load in electric power systems
- ✓ compatible with windows98,2000,XP
- ✓ Powerful mouse and ribbon-driven Pan and Zoom facilities.
- ✓ data available and/or entered in tabular form
- ✓ access to graphical reporting facilities
- ✓ Tabular or Dialog Data Entry
- ✓ The outline, contents and units of the generated tabular reports are completely user defined
- ✓ Graphical visualization of results by labeling components with a simple mouse action
- ✓ User-Defined Graphical Reports
- ✓ Copy and Paste through clipboard
- ✓ Representation of dynamic load model with double cage induction motor for rise precision

The load modeling program package (LOADMOD) converts load mix, load composition, and load characteristic data into the parameters required for power flow and transient stability programs. LOADMOD is composed of on input data file, two programs and two data bases. These programs and databases are including: Load characteristic data base, load composition data base, general load modeling program and special load modeling program.

The user provides input to general load modeling program to describe the load on each bus or group of buses (zones, areas) by the percentage mix of load classes such as residential, commercial, industrial and power plant auxiliary, etc. Each load class is defined, in a database file, by its percentage composition in terms of components, such as window air conditioner incandescent lighting, refrigeration, etc. Default data is provided as part of the software package for this composition data.

The parameters defining the voltage and frequency characteristics and dynamic characteristics of each of the load components are stored in another database file, supplied with the software package, which can be easily modified by the user to add more components or use new data that becomes available.

The general load models generated by software are transferred to the special load modeling program, which generates "specific load models" in the forms required by the specific power flow and transient stability programs. When running special load modeling program, the user can also select which of the models available in the particular power flow or stability program, are to be used for certain buses or groups of buses.

VI. LOADMOD SOFTWARE TESTING FOR BAKHTAR POWER SYSTEM

The LOADMOD was tested by BAKHTAR power system network. This network has several buses load (63/20 kv). In this paper all of the buses modeled with LOADMOD. Routine for this modeling is explained in following:

A. Preparing Load Class Mix Data for BAKHTAR Power System

Load class mix data is the percentage fractional composition of the bus load by load classes. This shows the percentage of each residential, commercial or industrial loads for the sampled bus bar. Load class mix data is different for each and every bus and it is changing with weather and other climatic conditions of the region. These data are normally not available or is very difficult to set up in a large scale power system. Different methods are presented for collecting these data and classification of the system loads. The method explained in this paper is collecting these data from customer billing data, which includes the energy consumption of every costumed for two months period. Power system companies are usually having different pricing protocol for each consumer according to its use. Load class mix data is as input data for software, but for BAKHTAR power system is as a default in software.

B. Load Class Mix Data for Each Region

The BAKHTAR power system network is divided into several regions that a part of them as presented by Table I. Form the two months customer billing information available from load forecasting department, the customer energy consumption (MWh) is categorized to industrial, utilities, commercial and residential. The results shown in Table I present the percentage energy consumption of the total load in

each region and for the province as a whole, for the months of May and June 2005. This table is repeated for the six two months of the year to obtain the variations of the load mixture over the year. With some approximation the Table I can be used to have modeling for the first six months of the year and also data for two months of October and November 2005 can be used to have load modeling for the second six months of the year.

C. Load Class Mix Data for Each Bus

In the second level of classification each region is broken further into three parts: municipality, industrial and district as each one of them is called a zone. In every power system network, the total numbers of zones are equivalent to number of regions into three. Load class mix data for each zone is found out similar to that of each region. Classification is followed here to obtain load mixtures for these new subsections with in each region. Infact, the above classification divides the system into 78 zones with associated defined characteristics [7]. For the 78 segments of the BAKHTAR power system (municipality, industrial and district), characteristics were derived containing the load mixture for the whole year. This information was stored in data base for the Production of load mix in base cases for different times of the year. For the BAKHTAR power system all over – distribution substations (63/20 kV) are considered to be a bus bar.

TABLE I

A PART OF LOAD CLASS MIX DATA FOR AREA OF BAKHTAR POWER SYSTEM FOR THE MONTHS OF MAY AND JUNE 2005

Area name	Resi (%)	Agr. (%)	Ind (%)	Com. (%)	Lig (%)
Arak	46.00	13.43	20.31	13.63	6.63
Delijan	24.07	2.28	60.81	7.53	5.31
Saveh	19.71	11.90	55.84	5.93	6.61
Farahan	32.61	29.54	12.97	5.41	19.47
Hamadan	52.73	9.97	15.04	14.21	8.06
Malayer	41.34	30.49	10.97	10.44	6.76
Toyserkan	50.54	21.89	8.92	12.32	6.34
Razan	23.03	28.08	33.61	4.64	10.63
Nahavand	46.06	29.95	5.57	12.65	5.77
Gorveh	84.18	0.00	1.18	7.42	7.22

Load class mix data for each bus bar can be known simply by knowing the bus bar location in the region and zone. Table II shows a part of load class mix data for over-distribution substations (bus bar) of the BAKHTAR power system for the months of May and June 2005. The kind of substation voltage and capacity of the over – distribution substations of the BAKHTAR power system are known and easily available with load forecasting department.

TABLE II

A PART OF LOAD CLASS MIX DATA FOR OVER DISTRIBUTION SUBSTATIONS OF BAKHTAR POWER SYSTEM FOR THE MONTHS OF MAY AND JUNE 2005

Bus name	Resi (%)	Agr. (%)	Ind (%)	Com. (%)	Lig (%)
Bahar	32.92	30.45	24.10	5.88	6.65
Mrianj	39.70	8.89	33.27	10.96	7.18
Laljin	75.36	0.00	0.45	16.86	7.32
AsadAbad	32.13	50.63	2.73	8.33	6.17
KabodrAhang	32.12	43.80	6.87	11.08	6.13
Sarkan	85.04	0.02	1.13	6.57	7.24
Jokar	90.30	0.06	0.34	3.56	5.75
Gahavand	68.63	15.11	4.52	5.99	5.75
Khazal	25.45	63.60	2.66	2.79	5.50
Gorveh	84.18	0.00	1.18	7.42	7.22
Shisheh	0.00	0.00	100.	0.00	0.00
SimanHegmatan	0.00	0.00	100.0	0.00	0.00
SimanEkbatan	0.00	0.00	100.0	0.00	0.00

Load class mix data is as input for software but this data for BAKHTAR power system is as a default in LOADMOD. Menu for input data is shown in Fig. 4.

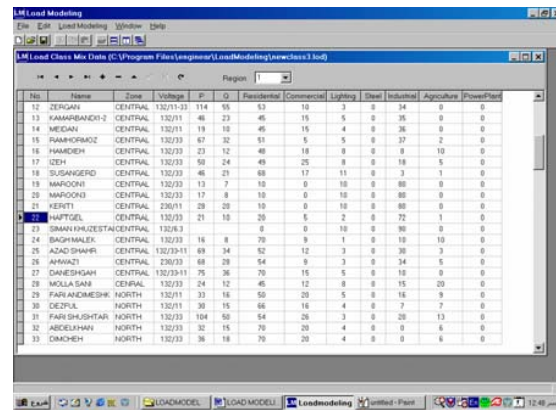


Fig. 4 Menu for load class mix input data

D. Load Composition Data Base

These data are infact showing percentage of the load composition such as refrigerator, air conditioning, lighting and etc, for a total load class mix in each every bus bar. Load composition data can very significantly with time of day, day of week, season, and weather. However, it may be find for four or two seasons of the year like winter and summer. It may also be prudent in some studies to assume the same load model for each season in a power system network. For a typical power system network these data are not too much variable and can be counted as a bus bar in that network for load modeling. These data are same from one bus bar to the other.

In warm climates, summer load may include large amounts of air conditioning load. Winter Loads may consist of electric heating in areas of low energy cost, or heat pump in other areas. Both air conditioning and heating loads are seasonal, but are also very sensitive to weather. Cold, windy weather will increase heating load and hot, humid weather will increase air conditioning load. Weekday load is likely to be

dominated by industrial loads. Up to 90% of the load in some industrial plants is motor load. Commercial building loads are largely consists of air conditioning and discharge lighting. Agricultural load are largely consists of motors driving pumps, especially in growing seasons. Composition data defaults for LOADMOD are 18 cases of US and 2 cases for BAKHTAR power system as shown in Table III. This data base can be developed by user. Menu for load composition data is shown in Fig. 5.

E. Load Characteristics Data

This data is third sets of data required for modeling. These are a set of parameters such as power factor, variation of power with voltage, etc., that characterize the behavior of a specified load. They can be of either static model or dynamic model these characteristics can be obtained for each load component during the laboratory of factory tests. To obtain load characteristics data for BAKHTAR power system, 29 components mentioned in Table III are to be tested which is a very difficult task due to numbers of them. The results of laboratory experiments on six of them such as air conditioning (CRAR, PRAR), refrigerator (REFR), cloth washer (CWSH), color television (TVSN), water heater (ELWH) and florescent lights (FLIT) are presented in [7]. Static and dynamic load component are found out as explained in [8,9]. To find out N_m we divided total motor power of the component to the consumption power of the component. Table IV presents static and dynamic characteristics of the components which have been used.

However, it would have been much better if all 29 components would have been tested and their characteristics are modeled. Table IV is as a data base for load mod software. A part of this data base is shown in Fig. 6.

F. General Modeling Program

Static general modeling option in main menu software creates general load models as described in (1), (2) equations, from data on mix, composition and characteristic. Typically for BAKHTAR power system, static modeling is shown in Table V. A part of output data for static general model is shown in Fig. 7. Software outputs for dynamic modeling (single and two induction motor) are shown in Table VI, VII.

G. Special Modeling Program

This program transforms the general load models in to the specific formats and detail levels required by several common-used power flow and transient Stability programs – namely, the EPRI [10], CYME Company [10], and power technologies, Inc (PTI) [10] programs. Interface to other programs can be easily added. Typically BAKHTAR power system is shown in Table VI. A part of output data for static special model is shown in Fig. 8.

VII. LOAD MODEL SIMULATION

In this paper simulations made at MALAYER1 substation of BAKHTAR power system to determine the sensitivity of the load to voltage and frequency changes. Figs. 9 and 10 show the results of one of these simulations.

Different load configuration is studied. The simplified load used as a reference on MALAYER1 substation primarily consist of a general load model (A), CYME load model (B) and constant impedance load model (C).

The response of active and reactive power for this bus following loss one of transmissions lines is shown in Fig. 11 and Fig. 12 respectively. In two figures, power is given in perunit on a 100 MVA base and voltage is given in p.u. based on nominal voltage.

It was found that simplified models A and B are suitable for application in voltage stability studies, whereas model C does not capture the dynamic state change adequately giving wrong predictions on voltage stability behaviour.

Fig. 5 Menu for load composition data

TABLE III
LOAD COMPOSITION DATA FOR BAKHTAR POWER SYSTEM

Equipment	Code	class	Winter(%)	Summer(%)
Electric heater	REHT	Residential	6	43
Pump heater	RSPM	Residential	0	0
Pump aircon.	RCPM	Residential	0	0
Central aircond.	RCAR	Residential	0	0
Room aircond.	RRAR	Residential	0	27.6
Elec. Water heat.	ELWH	Residential	0	0
range	ELRA	Residential	0	0
Refrigerator	REFR	Residential	49.5	35.9
Dish washer	DWSH	Residential	0	0
Cloth washer	CWSH	Residential	1.3	1
Cloth dryer	DRYR	Residential	0	0
Lighting	ILIT	Residential	38.4	37.8
Television	TVSN	Residential	10	7.2
Floor fan	FFAN	Residential	0	0
Pump heater	CSPM	Commercial	4.4	0

Pump aircon.	CCPM	Commercial	0	0
Central aircond.	CCAR	Commercial	0	0
Room aircond.	CRAR	Commercial	0	30
Florecent ligh.	FLIT	Commercial	47.7	35.5
Other light.	ILIT	Commercial	47.7	47.7
Alum. Electrolis.	ELTR	Industrial	100	100
Iron.arc furn.	FURN	Steel indu.	25	25
Iron small drives	SINM	Steel indu.	35	35
Iron large drives	LINM	Steel indu.	40	40
Other small drives	SMOT	Industrial	65	65
Other large drives	LMOT	Industrial	35	35
Agricul. Water pump	AGMP	Agricultural	100	100
Power plant auxiliaries	PPAU	Power plant	100	100

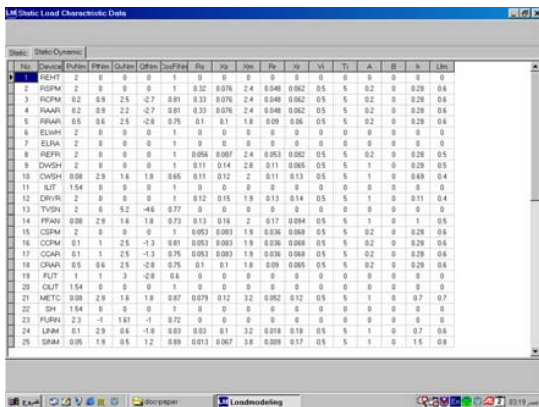


Fig. 6 Menu for load characteristics data

TABLE IV
LOAD CHARACTERISTICS DATA FOR BAKHTAR POWER SYSTEM

Component	Static Characteristics										Dynamic Characteristics							
	FP	P ₁	P ₂	Q ₁	Q ₂	P ₁ - Q ₁	P ₂ - Q ₂	Q ₁ - P ₁	Q ₂ - P ₂	X ₁	X ₂	Y ₁	Y ₂	Z ₁	Z ₂	L ₁	L ₂	
Resistance space heater	1.0	2.0	0.0	0.0	0.0	0.0	0.0	0.0	0.0	33	076	2.4	048	062	0.2	0.0	0.28	
Heat pump space heating	0.84	0.2	0.9	2.5	-1.3	0.9	1.0	2.0	0.0	33	076	2.4	048	062	0.2	0.0	0.28	
Heat pump central air cond.	0.81	0.2	0.9	2.5	-1.3	0.9	1.0	2.0	0.0	33	076	2.4	048	062	0.2	0.0	0.28	
Central air conditioner	0.81	0.2	0.9	2.5	-1.3	0.9	1.0	2.0	0.0	33	076	2.4	048	062	0.2	0.0	0.28	
Room air conditioner	0.75	0.5	0.8	2.5	-2.8	1.0	0.0	0.0	0.0	10	1.8	0.9	0.0	0.2	0.0	0.28	0.6	
Water heater	1.0	2.0	0.0	0.0	0.0	0.0	0.0	0.0	0.0	0.0	0.0	0.0	0.0	0.0	0.0	0.0	0.0	
Range	1.0	2.0	0.0	0.0	0.0	0.0	0.0	0.0	0.0	0.0	0.0	0.0	0.0	0.0	0.0	0.0	0.0	
Refrigerator and freezer	0.84	0.8	0.5	2.5	-1.4	0.8	1.0	2.0	0.0	0.0	066	087	2.4	053	082	0.2	0.0	0.28
Dishwasher	0.99	1.8	0.0	3.2	-1.4	0.8	1.0	2.0	0.0	0.0	11	1.4	2.8	1.1	0.65	1.0	0.28	0.5
Washer	0.99	1.8	0.0	3.2	-1.4	0.8	1.0	2.0	0.0	0.0	11	1.4	2.8	1.1	0.65	1.0	0.28	0.5
Incandescent lighting	1.0	1.54	0.0	0.0	0.0	0.0	0.0	0.0	0.0	0.0	0.0	0.0	0.0	0.0	0.0	0.0	0.0	
Clothes dryer	0.99	2.0	0.0	3.2	-2.2	0.2	1.0	2.0	0.0	0.0	12	1.5	1.9	1.3	1.4	0.0	0.11	0.4
Shower	0.99	1.8	0.0	3.2	-1.4	0.8	1.0	2.0	0.0	0.0	11	1.4	2.8	1.1	0.65	1.0	0.28	0.5
Furnace fan	0.73	0.08	2.9	1.6	1.8	1.0	1.0	0.0	0.0	0.0	0.0	0.0	0.0	0.0	0.0	0.0	0.0	
Commercial heat pump	0.84	0.1	1.0	2.5	-1.3	0.9	1.0	2.0	0.0	0.0	53	83	1.9	036	068	0.2	0.0	0.28
Heat pump commercial A/C	0.81	0.2	0.9	2.5	-1.3	0.9	1.0	2.0	0.0	0.0	53	83	1.9	036	068	0.2	0.0	0.28
Commercial central A/C	0.75	0.1	1.0	2.5	-1.3	1.0	1.0	0.0	0.0	0.0	53	83	1.9	036	068	0.2	0.0	0.28
Commercial furnace	0.75	0.5	0.6	2.5	-2.8	1.0	0.0	0.0	0.0	0.0	10	1.8	0.9	0.0	0.2	0.0	0.28	0.6
Porous light fixture	0.90	1.5	0.0	3.0	-1.5	0.0	0.0	0.0	0.0	0.0	0.0	0.0	0.0	0.0	0.0	0.0	0.0	
Pumps, fans, other motors	0.87	0.08	2.9	1.6	1.8	1.0	1.0	0.0	0.0	0.0	079	12	3.2	052	1.2	0.0	0.7	0.7
Electricals	0.90	1.8	0.3	2.2	0.6	0.0	0.0	0.0	0.0	0.0	0.0	0.0	0.0	0.0	0.0	0.0	0.0	
Air furnace	0.92	1.9	0.0	3.2	-1.4	0.8	1.0	2.0	0.0	0.0	0.0	0.0	0.0	0.0	0.0	0.0	0.0	
Small industrial motors	0.83	0.1	0.9	2.6	-1.8	1.0	1.0	0.0	0.0	0.0	031	10	3.2	018	1.8	1.0	0.7	0.6
Large industrial motors	0.89	0.95	1.0	0.5	1.2	1.0	1.0	0.0	0.0	0.0	033	067	3.8	009	1.7	1.0	1.5	0.8
Agricultural water pumps	0.83	1.4	0.6	1.4	0.2	0.0	0.0	0.0	0.0	0.0	035	088	3.2	012	0.8	0.7	0.8	0.7
Power plant auxiliaries	0.89	0.9	1.0	0.5	1.2	1.0	1.0	0.0	0.0	0.0	031	14	2.4	009	1.2	1.0	1.5	0.7

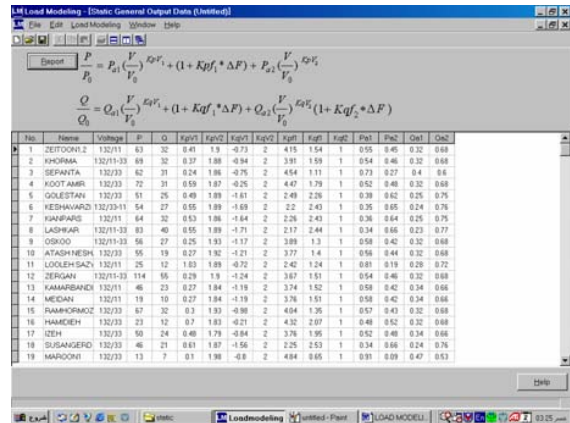


Fig. 7 Menu for general load model data

TABLE V
A PART OF GENERAL LOAD MODEL FOR BAKHTAR POWER SYSTEM

	Malayer1	Asad- Abad	Hamedan	Hossein- Abad	Saleh- Abad
P0	26.7	29.2	30.1	11.3	16.0
Q0	12.9	14.1	14.6	5.5	7.7
KPV1	0.96	1.17	0.78	0.94	1.17
KPV2	1.42	1.42	1.42	1.45	1.42
KQV1	0.7	2.08	-1.18	1.76	2.08
KQV2	2	2	2	2	2
KPF1	2.79	3.73	1.61	3.69	3.73
KQF1	1.95	1.84	2.24	1.49	1.84
KQF2	1	1	1	1	1
Pa1	0.84	0.87	0.78	0.92	0.87
Pa2	0.16	0.13	0.22	.08	0.13
Qa1	0.44	0.48	0.38	0.51	0.48
Qa2	0.56	0.52	0.62	0.49	0.52

TABLE VI
ESTIMATED VALUES OF A SINGLE MOTOR MODEL

	Malayer1	Asad- Abad	Hamedan	Hossein- Abad	Saleh- Abad
P0	26.7	29.2	30.1	11.3	16.0
Q0	12.9	14.1	14.6	5.5	7.7
Rs	0.04	0.04	0.05	0.03	0.04
Xs	0.1	0.09	0.1	0.09	0.09
Rr	0.04	0.04	0.05	0.03	0.04
Xr	0.11	0.12	0.1	0.14	0.12
Xm	2.58	2.71	2.38	2.91	2.71
h	0.59	0.64	0.51	0.73	0.64
A	0.65	0.74	0.51	0.84	0.74
B	0	0	0	0	0

TABLE VII
ESTIMATED VALUES OF A TWO MOTOR MODEL

	Malayer1	Asad- Abad	Hamedan	Hossein- Abad	Saleh- Abad
P0	26.7	29.2	30.1	11.3	16.0
Q0	12.9	14.1	14.6	5.5	7.7
Rs	0.04	0.04	0.03	0.02	0.06
	0.09	0.05	0.11	0.06	0.11
Xs	0.12	.10	0.13	0.10	0.12
	0.12	0.13	0.14	0.13	0.15
Rr	0.03	0.05	0.06	0.03	0.02
	0.07	0.06	0.12	0.05	0.09
Xr	0.132	0.14	0.13	0.18	0.16
	0.135	0.16	0.12	0.17	0.13
Xm	2.95	3.27	2.44	3.76	3.7
	2.56	3.18	2.54	3.27	3.5
h	0.82	0.92	0.56	0.67	0.55
	1.50	1.65	1.11	1.81	1.13
A	0.81	0.91	0.61	0.94	0.44
	1.55	1.65	1.18	1.75	1.25
B	0	0	0	0	0
	0	0	0	0	0

TABLE VIII
A PART OF SPECIAL LOAD MODEL FOR BAKHTAR POWER SYSTEM

	Malayer1	Asad- Abad	Hamedan	Hossein- Abad	Saleh- Abad
P0	26.7	29.2	30.1	11.3	16.0
Q0	12.9	14.1	14.6	5.5	7.7
P1	0.52	0.6	0.46	0.49	0.6
P2	0	0	0	0	0
P3	0.48	0.4	0.54	0.51	.4
Q1	1.43	2.04	0.8	1.88	2.04
Q2	0	0	0	0	0
Q3	-0.43	-1.04	.20	-0.88	-1.04
LDP	0	0	0	0	0
LDQ	0	0	0	0	0

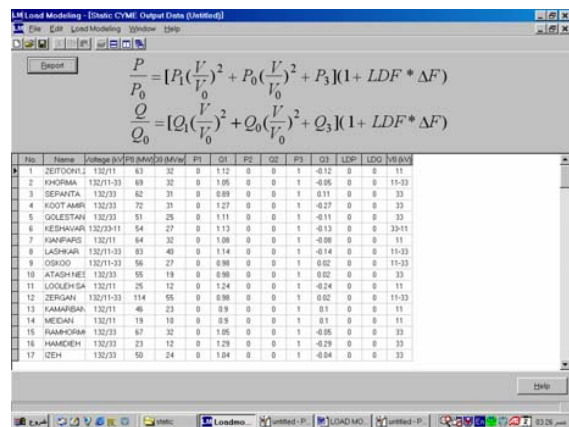


Fig. 8 Menu for special load model data

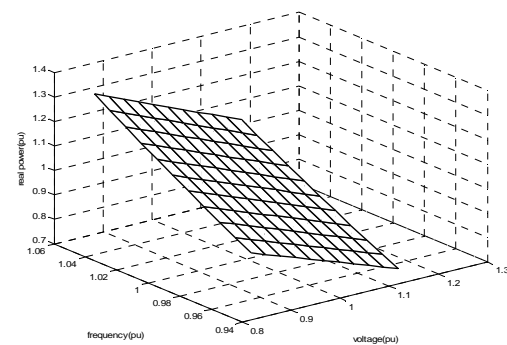


Fig. 9 Sensitivity of the active power to voltage and frequency changes for MALAYER1 substation

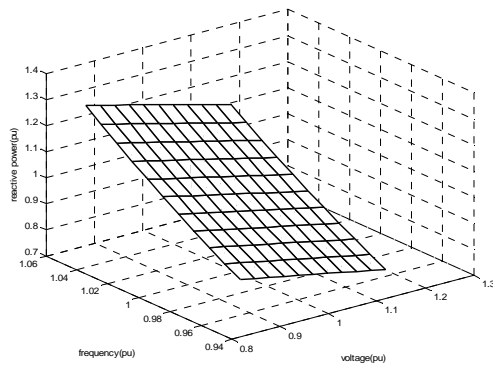


Fig. 10 Sensitivity of the reactive power to voltage and frequency changes for MALAYER1 substation

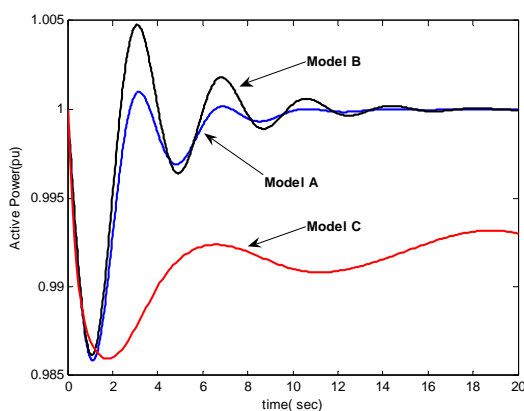


Fig. 11 Transient load responses, active power for MALAYER1 bus

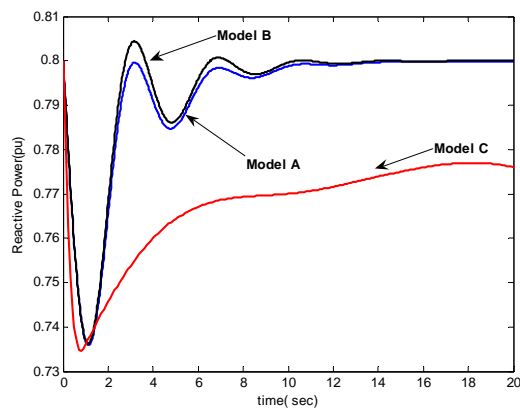


Fig. 12 Transient load responses, active power for Malayer1 bus

VIII. CONCLUSION

The load modeling (LOADMOD) software has been designed to use, to the fullest extent possible, the present load modeling capabilities in commonly – used power flow and stability programs. The LOADMOD programs with their associated documentation and default data bases provide the electric utility industry with an easy way to begin immediately to obtain improved load models for power flow and stability analysis. Yet they also provide a flexible framework for incorporating improved data and models as these are developed.

REFERENCES

- [1] IEEE Task Force on load representation for dynamic performance. Bibliography on load models for power flow and dynamic Performance Simulation: *IEEE Trans. On power Systems*. Vol. 10, No.1 .1995.
- [2] O. Ruhle, Instructions for Data input to NETOMAC. *Siemens AG*, 1996.
- [3] R. Balanathan, N. C. Pahaolawaththa and U. D. Annakkage. Undervoltage Load shedding for induction Motor dominant loads considering P.Q Coupling. *IEE Proc – Gener. Transm Distr.* VI .146, No.4 July.
- [4] A. Borghetti, R. Caldon. A. Mari and C. Nucci, On Dynamic Load Models for voltage stability studies. *IEEE Trans. Power systems* Vol.12, No.1 .Feb.1993.
- [5] D.J.Hill .Nonlinear Dynamic Load Models with Recovery for voltage stability studies. *IEEE Trans. Power Systems* Vol.8 .No.1. Feb.1993
- [6] D. Karlsson and D. J. Hill. Modeling and identification of Nonlinear Dynamic Loads in power systems. *IEEE Trans. Power Systems*, Vol.9 No.1, Feb.1994.
- [7] M. Sedighzadeh, M. Kalantar load modeling with component based methods, M. S. thesis, IUST, Nov 1998
- [8] G. Rogers, J. di Manno and R. Alden, An Aggregate induction Motor model for industrial Plants. *IEEE Trans. On PAS*, No.4, 1984.
- [9] F. Nozari, M. Kankam, W. Price. Aggreagation of induction motors for transient stability Load modeling. *IEEE Trans. on power Systems*. Vol.2 1987.
- [10] M. Taleb, M. Akbaba and E. Abdullah, Aggregation of induction machines for power System Dynamic Studies., *IEEE Trans. On Power Systems*. Vol. 9 .1994.



M. Sedighzadeh received the B.S. degree in Electrical Engineering from the Shahid Chamran University of Ahvaz, Iran and M.S. and Ph.D. degrees in Electrical Engineering from the Iran University of Science and Technology, Tehran, Iran, in 1996, 1998 and 2004, respectively. From 2000 to 2007 he was with power system studies group of Moshanir Company, Tehran, Iran. Currently, he is an Assistant Professor in the Faculty of Electrical and Computer Engineering, Shahid Beheshti University, Tehran, Iran. His research interests are Power system control and modeling, FACTS devices and Distributed Generation.



A. Rezazade was born in Tehran, Iran in 1969. He received his B.Sc and M.Sc. degrees and Ph.D. from Tehran University in 1991, 1993, and 2000, respectively, all in electrical engineering. He has two years of research in Electrical Machines and Drives laboratory of Wuppertal University, Germany, with the DAAD scholarship during his Ph.D. and Since 2000 he was the head of CNC EDM Wirecut machine research and manufacturing center in Pishraneh company. His research interests include application of computer controlled AC motors and EDM CNC machines and computer controlled switching power supplies. Dr. Rezazade currently is an assistant professor in the Power Engineering Faculty of Shahid Beheshti University.