

# Availability Analysis of Milling System in a Rice Milling Plant

P. C. Tewari, Parveen Kumar

**Abstract**—The paper describes the availability analysis of milling system of a rice milling plant using probabilistic approach. The subsystems under study are special purpose machines. The availability analysis of the system is carried out to determine the effect of failure and repair rates of each subsystem on overall performance (i.e. steady state availability) of system concerned. Further, on the basis of effect of repair rates on the system availability, maintenance repair priorities have been suggested. The problem is formulated using Markov Birth-Death process taking exponential distribution for probable failures and repair rates. The first order differential equations associated with transition diagram are developed by using mnemonic rule. These equations are solved using normalizing conditions and recursive method to drive out the steady state availability expression of the system. The findings of the paper are presented and discussed with the plant personnel to adopt a suitable maintenance policy to increase the productivity of the rice milling plant.

**Keywords**—Markov process, milling system, availability modeling, rice milling plant.

## I. INTRODUCTION

AVAILABILITY is one of the important measures of system performance besides reliability under the specified conditions of use [16]. The industrial systems comprise of complex engineering subsystems arranged in series, parallel or hybrid configuration. The Rice Milling Plant is divided into many sections like Paddy Drying Section, Rice Milling, Rice Finishing and Rice Grading Section. The rice milling system is one of the important functionary sections of the rice milling plant. The system consists of five subsystems namely Husker (A), Hush Separator (B), De-stoner (C), Paddy cleaner (D) and Rotary Magnet (E). The process flow diagram of milling system of a rice milling plants is shown in Fig. 1. Initially, the raw material i.e. paddy of various varieties has been provided by the paddy drying section of the plant. Firstly, the paddy is pass through the rotary magnet to separate the foreign iron particles present in the paddy to save the husker. Thereafter, paddy is supplied to the bulk storage cum weighing system, which act as a buffer system. After that paddy is fed to the paddy cleaner to separate the unwanted particles; it works on the principle of specific gravity, then clean paddy is fed to the de-stoner to separate out the stone (hard particles) from the paddy. Now, paddy is ready for

milling in husker, here husk is removed from the paddy due to milling action to give mixture of rice and husk. Thereafter, mixture of rice and husk is fed to the husk separator to separate the husk from the rice, the husk is collected in the open storage while rice and unmilled paddy is sent to next section of the plant for finishing and grading of the rice. The industrial systems are subjected to random failures due to inappropriate design, poor maintenance and wrong operations etc. The failed systems can be brought back into working order within minimum period of time after repair. The availability analysis is useful for long duration with high performance level of the systems in the industries to minimize the production cost and hence to increase productivity.

The available literature shows the many approaches have been used to analyze the system performance in terms of availability. These are Reliability Block Diagram (RBD), Monte Carlo simulation, Markov approach, failure mode and effect analysis, Fault tree analysis and petri nets. Dhillon and Singh [7] used the Markovian approach for the availability analysis using exponential distribution for failure and repair rates. Kumar et al. [19] used the Markov modeling for analysis and performance evaluation of fertilizer plant. Coit et al. [4] proposed a multiple objective formulation for maximizing the system availability. Gupta et al. [8] discussed the reliability parameters of butter making system of dairy plant taking exponentially distributer failure and repair rates of various subsystems. Kumar et al. [20] evaluated the simulated availability of CO<sub>2</sub> cooling system of a fertilizer plant using Markovian approach. Sachdeva et al. [23] presented a new multi criteria optimization approach for developing optimal maintenance schedules for Preventive Maintenance (PM) which considers availability, maintenance cost and life cycle costs as the criteria for optimization purpose using Petri Net (PN) technique and applied to the paper industry. Ying-Shen et al. [26] proposed a genetic algorithm based optimization model to optimize availability of a series-parallel system.

Azaron et al. [1] developed a new methodology for reliability evaluation and optimization of non-repairable dissimilar component cold standby redundant systems. Garg et al. [9] developed the mathematical model of a cattle feed plant using a birth-death Markov Process. The differential equations have been solved for the steady-state. The system performance has also been studied. Garg et al. [10] developed a reliability model of a block- board manufacturing system in the plywood industry using time dependent and steady state availability under idealized and faulty PM. Kajal et al. [15] developed a decision support system for a butter oil unit of a dairy plant. The mathematical model of the butter oil unit has been

Dr.P.C. Tewari is Professor with Department of Mechanical Engineering at National Institute of Technology, Kurukshetra, Haryana 136119 India (phone: +91 97 29234963; e-mail: pctewari1@rediffmail.com).

Parveen Kumar is Ph.D. Research Scholar with Department of Mechanical Engineering at National Institute of Technology, Kurukshetra, Haryana 136119 India. (e-mail: pksaini\_29@rediffmail.com).

developed using probabilistic approach and the various differential equations have been derived on the basis of transition diagram (Fig. 2). These equations are further solved to find out the steady state availability of the unit, which is the measure of performance.

Kumar and Tewari [21] discussed the mathematical modeling and performance optimization of CO<sub>2</sub> cooling system of a fertilizer plant using genetic algorithm. Differential equations have been derived based on Markov birth-death process using probabilistic approach. These equations are then solved using normalizing conditions to determine the steady state availability of the CO<sub>2</sub> cooling system. Vora et al. [27] presented the stochastic analysis and performance evaluation of steam generator system of thermal power plant. Initially transition diagram representing the operational behavior has been drawn and problem addressed by using Markov approach. The availability of each system has been analyzed and condition based maintenance decisions has been proposed.

Garg and Sharma [11] presented a novel technique named as PSOBLT for determining the membership function of the reliability indices of complex repairable industrial system having lesser uncertainty. Major advantage of the proposed technique was that it had given compressed search space for each computed reliability index by utilizing available information and uncertain data. The PSOBLT technique had been applied through a case study of feeding unit in a paper plant.

Khanduja et al. [17] presented a performance model for stock preparation unit of a paper plant using Markov approach and further optimize the performance of the unit using Genetic Algorithm (GA) taking constant failure and repair rates. Khanduja et al. [18] described a performance enhancement model of crystallization unit of a sugar plant using Markov modeling and GA. Harish and Monika [13] suggested an approach for reliability analysis of industrial systems using PSO and Intuitionist Fuzzy Set (IFS) techniques applied to washing system of a paper industry. Modgil et al. [22] presented a performance model based on Markov process for shoe upper manufacturing unit and find out the time dependent system availability with long term availability of the system. Barabadi et al. [3] give an application of reliability models with covariates using spare parts requirements as reliability performance indicator and presented a case study of repairable system. Doostparast et al. [6] developed a reliability based periodic PM planning model for systems to minimize the total maintenance cost using simulated annealing approach. Feeding unit of a sugar industry is chosen here to develop a Decision Support System, so as to decide the maintenance priorities among its various subsystems.

Gowid et al. [12] suggested a reliability model based on time dependent Markov approach for LNG production plant. Shahrzad et al. [25] developed a model for availability assessment of multi-state weighted k-out-of-n systems. Zhang et al. [28] presented a simplified method for offshore oil production system which is a hybrid approach i.e. combination of continuous-time and discrete time.

Hou et al. [14] discussed the availability analysis of systems using random set theory. They use random set theory for availability assessment of systems with rare failure events. Instead of using failure probabilities calculated directly from each component's observation, they propose to construct pseudo-system observations directly from components observations. Cekyay et al. [5] presented the reliability, MTTF and steady-state availability analysis of systems with exponential failure. They focused mainly on coherent systems and series connection of k-out-of-n stand by subsystems with exponentially distributed component lifetimes. Sabouhi et al. [24] dealt with the reliability modeling and availability analysis of Combined Cycle Power Plants (CCPP). Reliability-based sensitivity indices are proposed to identify the plant critical components and hence to decide the efficient maintenance strategies.

Literature review shows that most of researchers confined their work to power plant, paper plant, chemical plant, sugar plant and fertilizer plant etc. But author did not find adequate work in the area of rice plant which is one of the important system of food processing industry. In the present work, availability analysis of milling system of a rice milling plant has been discussed. The paper focus on the system availability and find out value of system availability under various possible combination of failure and repair rates. The steady state availability has been calculated using software package MATLAB 2007a. Further, on the basis of availability analysis, suggestions have been made to decide the maintenance repair priorities of various subsystems of the system concerned.

## II. SYSTEM DESCRIPTION

The process flow diagram of milling system of a rice milling plant is shown in Fig. 1. It consists of five subsystems as described below:

- [1] Rotary Magnet: Firstly, the paddy is passed through the Rotary Magnet to separate the foreign iron particles present in the paddy to save the Husker.
- [2] Paddy Cleaner: This subsystem is used to clean the paddy and separate out the unwanted particles present in paddy. It works on the principle of specific gravity.
- [3] De-Stoner: The clean paddy is feed to the de-stoner to separate out the stone (hard particles) from the paddy.
- [4] Husker: This subsystem is the heart of the milling system, here husk is removed from the paddy due to rubbing action to give mixture of rice and husk.
- [5] Husk Separator: It is used to separate out the rice and husk from the mixture coming out from the Husker. The husk separated from the rice is collected in the open storage, while rice and unmilled paddy is sent to the next system of the plant.

## III. ASSUMPTIONS AND NOTATIONS

The following assumptions and notations are used to develop state transition diagram (Fig. 2) of the system concerned.

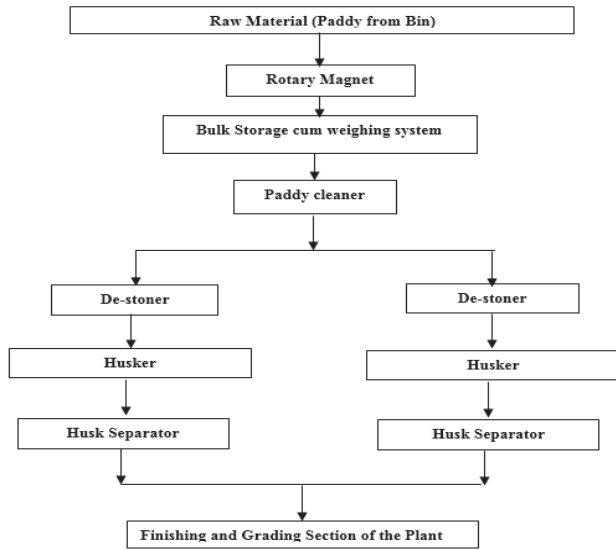


Fig. 1 Process flow diagram of milling system of a rice milling plant

#### A. Assumptions

- The failure and repair rates of all subsystems are constant, statistically independent to each other and there are no simultaneous failures of the subsystems [19].
- A repaired subsystem is as good as new one, performance wise and switchover devices used for standby systems are perfect [17].
- There are sufficient repair facilities. The failure and repair rates of each subsystem follows exponential distribution [2].

#### B. Notations

- Subsystem A consists of two Huskers subjected to major as well as minor failures.
- Subsystem B consists of two Husk Separators subjected to major as well as minor failures.
- Subsystem C consists of two De-Stoners subjected to major as well as minor failures.
- Subsystem D consists of one Paddy Cleaner subjected to major as well as minor failures.
- Subsystem E consists of one number of Rotary Magnet subjected to minor failure and not considered for analysis.
- : System working in full capacity.
- ◇: System working in reduced capacity.
- : System in the failed state.
- $A^O, B^O, C^O, D^O$ : Subsystems in good operating state.
- $A^F, B^F, C^F, D^F$  indicate the failed state of A, B, C, and D.
- $A^R, B^R, C^R$  indicate that the subsystems A, B, and C are working in reduced capacity.
- $\lambda_i$ : Mean failure rates from states  $A^O, B^O, C^O, D^O$  to  $A^R, B^R, C^R$  and  $A^F, B^F, C^F, D^F$  states.
- $\beta_i$ : Mean repair rates from  $A^F, B^F, C^F, D^F$  to  $A^R, B^R, C^R$  and  $A^O, B^O, C^O$  and  $D^O$  states.

- $P_i(t)$ : Probability that at time 't' all units are good and the system is in  $i^{th}$  state.
- '': Derivatives w.r.t. 't'
- Ass: Steady State Availability.

Based on the above assumptions and notations, state transition diagram has been developed as shown in Fig. 2.

#### IV. AVAILABILITY MODELING

The availability modeling of the system based on the Markov Birth-Death process is carried out using various probabilities considerations. The differential equations associated with the state transition diagram shown in Fig. 2, are developed using mnemonic rules as discussed by [17]. The different probability consideration generates the following sets of differential equations for each state one by one out of 28 states of transition diagram as explained by [19]:

$$P_1'(t) + M_1P_1(t) = \beta_1P_2(t) + \beta_2P_3(t) + \beta_3P_4(t) + \beta_4P_9(t) \quad (1)$$

$$P_2'(t) + M_2P_2(t) = \beta_5P_{13}(t) + \beta_4P_{12}(t) + \beta_3P_5(t) + \beta_2P_7(t) + \alpha_1P_1(t) \quad (2)$$

$$P_3'(t) + M_3P_3(t) = \beta_1P_7(t) + \beta_3P_6(t) + \beta_6P_{11}(t) + \beta_4P_{10}(t) + \alpha_2P_1(t) \quad (3)$$

$$P_4'(t) + M_4P_4(t) = \beta_1P_5(t) + \beta_4P_{15}(t) + \beta_7P_{14}(t) + \beta_2P_6(t) + \alpha_3P_1(t) \quad (4)$$

$$P_5'(t) + M_5P_5(t) = \beta_2P_8(t) + \beta_4P_{18}(t) + \beta_7P_{17}(t) + \beta_5P_{16}(t) + \alpha_3P_2(t) + \alpha_1P_4(t) \quad (5)$$

$$P_6'(t) + M_6P_6(t) = \beta_1P_8(t) + \beta_6P_{19}(t) + \beta_7P_{20}(t) + \beta_4P_{21}(t) + \alpha_3P_3(t) + \alpha_2P_4(t) \quad (6)$$

$$P_7'(t) + M_7P_7(t) = \beta_3P_8(t) + \beta_4P_{24}(t) + \beta_6P_{23}(t) + \beta_5P_{22}(t) + \alpha_2P_2(t) + \alpha_1P_3(t) \quad (7)$$

$$P_8'(t) + M_8P_8(t) = \beta_5P_{25}(t) + \beta_6P_{26}(t) + \beta_7P_{27}(t) + \beta_4P_{28}(t) + \alpha_1P_6(t) + \alpha_2P_5(t) + \alpha_3P_7(t) \quad (8)$$

$$P_9'(t) + \beta_4P_9(t) = \alpha_4P_1(t) \quad (9)$$

$$P_{10}'(t) + \beta_4P_{10}(t) = \alpha_4P_3(t) \quad (10)$$

$$P_{11}'(t) + \beta_6P_{11}(t) = \alpha_6P_3(t) \quad (11)$$

$$P_{12}'(t) + \beta_4P_{12}(t) = \alpha_4P_2(t) \quad (12)$$

$$P_{13}'(t) + \beta_5P_{13}(t) = \alpha_5P_2(t) \quad (13)$$

$$P_{14}'(t) + \beta_7P_{14}(t) = \alpha_7P_4(t) \quad (14)$$

$$P_{15}'(t) + \beta_4P_{15}(t) = \alpha_4P_4(t) \quad (15)$$

$$P_{16}'(t) + \beta_5P_{16}(t) = \alpha_5P_5(t) \quad (16)$$

$$P_{17}'(t) + \beta_7P_{17}(t) = \alpha_7P_5(t) \quad (17)$$

$$P_{18}'(t) + \beta_4P_{18}(t) = \alpha_4P_5(t) \quad (18)$$

$$P_{19}'(t) + \beta_6P_{19}(t) = \alpha_6P_6(t) \quad (19)$$

$$P_{20}'(t) + \beta_7 P_{20}(t) = \alpha_7 P_6(t) \quad (20)$$

$$P_{21}'(t) + \beta_4 P_{21}(t) = \alpha_4 P_6(t) \quad (21)$$

$$P_{22}'(t) + \beta_5 P_{22}(t) = \alpha_5 P_7(t) \quad (22)$$

$$P_{23}'(t) + \beta_6 P_{23}(t) = \alpha_6 P_7(t) \quad (23)$$

$$P_{24}'(t) + \beta_4 P_{24}(t) = \alpha_4 P_7(t) \quad (24)$$

$$P_{25}'(t) + \beta_5 P_{25}(t) = \alpha_5 P_8(t) \quad (25)$$

$$P_{26}'(t) + \beta_6 P_{26}(t) = \alpha_6 P_8(t) \quad (26)$$

$$P_{27}'(t) + \beta_7 P_{27}(t) = \alpha_7 P_8(t) \quad (27)$$

$$P_{28}'(t) + \beta_4 P_{28}(t) = \alpha_4 P_8(t) \quad (28)$$

where,

$$M_1 = (\alpha_1 + \alpha_2 + \alpha_3 + \alpha_4)$$

$$M_2 = (\alpha_5 + \alpha_4 + \alpha_3 + \alpha_2 + \beta_1)$$

$$M_3 = (\alpha_1 + \alpha_3 + \alpha_4 + \alpha_6 + \beta_2)$$

$$M_4 = (\alpha_1 + \alpha_7 + \alpha_4 + \alpha_2 + \beta_3)$$

$$M_5 = (\alpha_2 + \alpha_4 + \alpha_7 + \alpha_5 + \beta_3 + \beta_1)$$

$$M_6 = (\alpha_1 + \alpha_6 + \alpha_7 + \alpha_4 + \beta_3 + \beta_2)$$

$$M_7 = (\alpha_3 + \alpha_4 + \alpha_6 + \alpha_5 + \beta_2 + \beta_1)$$

$$M_8 = (\alpha_5 + \alpha_6 + \alpha_7 + \alpha_4 + \beta_2 + \beta_1 + \beta_3)$$

With initial condition at time  $t = 0$ ,

$$\begin{aligned} P_i(t) &= 1 \text{ for } i=1 \\ P_i(t) &= 0 \text{ for } i \neq 1 \end{aligned} \quad (29)$$

#### V. STEADY STATE AVAILABILITY OF THE SYSTEM

Khanduja et al. [17] suggested that in process plant, the management is interested to get the steady state availability of the system. The steady state availability of the system has been found out by applying steady state conditions i.e.  $t \rightarrow \infty$  and  $d/dt \rightarrow 0$ , on the set of differential equations (1) to (8), the equations are derived as:

$$M_1 P_1 = \beta_1 P_2 + \beta_2 P_3 + \beta_3 P_4 + \beta_4 P_9 \quad (30)$$

$$M_2 P_2 = \beta_5 P_{13} + \beta_4 P_{12} + \beta_3 P_5 + \beta_2 P_7 + \alpha_1 P_1 \quad (31)$$

$$M_3 P_3 = \beta_1 P_7 + \beta_3 P_6 + \beta_6 P_{11} + \beta_4 P_{10} + \alpha_2 P_1 \quad (32)$$

$$M_4 P_4 = \beta_1 P_5 + \beta_4 P_{15} + \beta_7 P_{14} + \beta_2 P_6 + \alpha_3 P_1 \quad (33)$$

$$M_5 P_5 = \beta_2 P_8 + \beta_4 P_{18} + \beta_7 P_{17} + \beta_5 P_{16} + \alpha_3 P_2 + \alpha_1 P_4 \quad (34)$$

$$M_6 P_6 = \beta_1 P_8 + \beta_6 P_{19} + \beta_7 P_{20} + \beta_4 P_{21} + \alpha_3 P_3 + \alpha_2 P_4 \quad (35)$$

$$M_7 P_7 = \beta_3 P_8 + \beta_4 P_{24} + \beta_6 P_{23} + \beta_5 P_{22} + \alpha_3 P_2 + \alpha_1 P_3 \quad (36)$$

$$M_8 P_8 = \beta_5 P_{25} + \beta_6 P_{26} + \beta_7 P_{27} + \beta_4 P_{28} + \alpha_2 P_5 + \alpha_1 P_6 + \alpha_3 P_7 \quad (37)$$

$$\beta_4 P_9 = \alpha_4 P_1 \quad (38)$$

$$\beta_4 P_{10} = \alpha_4 P_3 \quad (39)$$

$$\beta_6 P_{11} = \alpha_6 P_3 \quad (40)$$

$$\beta_4 P_{12} = \alpha_4 P_2 \quad (41)$$

$$\beta_5 P_{13} = \alpha_5 P_2 \quad (42)$$

$$\beta_7 P_{14} = \alpha_7 P_4 \quad (43)$$

$$\beta_4 P_{15} = \alpha_4 P_4 \quad (44)$$

$$\beta_5 P_{16} = \alpha_5 P_5 \quad (45)$$

$$\beta_7 P_{17} = \alpha_7 P_5 \quad (46)$$

$$\beta_4 P_{18} = \alpha_4 P_5 \quad (47)$$

$$\beta_6 P_{19} = \alpha_6 P_6 \quad (48)$$

$$\beta_4 P_{21} = \alpha_4 P_6 \quad (49)$$

$$\beta_5 P_{22} = \alpha_5 P_7 \quad (50)$$

$$\beta_6 P_{23} = \alpha_6 P_7 \quad (51)$$

$$\beta_5 P_{25} = \alpha_5 P_8 \quad (52)$$

$$\beta_6 P_{26} = \alpha_6 P_8 \quad (53)$$

$$\beta_7 P_{27} = \alpha_7 P_8 \quad (54)$$

$$\beta_4 P_{28} = \alpha_4 P_8 \quad (55)$$

On solving the above equations, we get:

$$P_2 = L_9 P_1 \quad (56)$$

$$P_3 = L_{11} P_1 \quad (57)$$

$$P_4 = L_3 P_1 \quad (58)$$

$$P_5 = L_{12} P_1 \quad (59)$$

$$P_6 = L_{13} P_1 \quad (60)$$

$$P_7 = L_{14} P_1 \quad (61)$$

$$P_8 = L_{15} P_1 \quad (62)$$

$$P_9 = \frac{\alpha_4}{\beta_4} P_1 \quad (63)$$

$$P_{10} = \frac{\alpha_4}{\beta_4} P_3 = \frac{\alpha_4}{\beta_4} L_{11} P_1 \quad (64)$$

$$P_{11} = \frac{\alpha_6}{\beta_6} P_3 = \frac{\alpha_6}{\beta_6} L_{11} P_1 \quad (65)$$

$$P_{15} = \frac{\alpha_4}{\beta_4} P_4 = \frac{\alpha_4}{\beta_4} L_{10} P_1 \quad (69)$$

$$P_{12} = \frac{\alpha_4}{\beta_4} P_2 = \frac{\alpha_4}{\beta_4} L_9 P_1 \quad (66)$$

$$P_{16} = \frac{\alpha_5}{\beta_5} P_5 = \frac{\alpha_5}{\beta_5} L_{12} P_1 \quad (70)$$

$$P_{13} = \frac{\alpha_5}{\beta_5} P_2 = \frac{\alpha_5}{\beta_5} L_9 P_1 \quad (67)$$

$$P_{17} = \frac{\alpha_7}{\beta_7} P_5 = \frac{\alpha_7}{\beta_7} L_{12} P_1 \quad (71)$$

$$P_{14} = \frac{\alpha_7}{\beta_7} P_3 = \frac{\alpha_7}{\beta_7} L_{10} P_1 \quad (68)$$

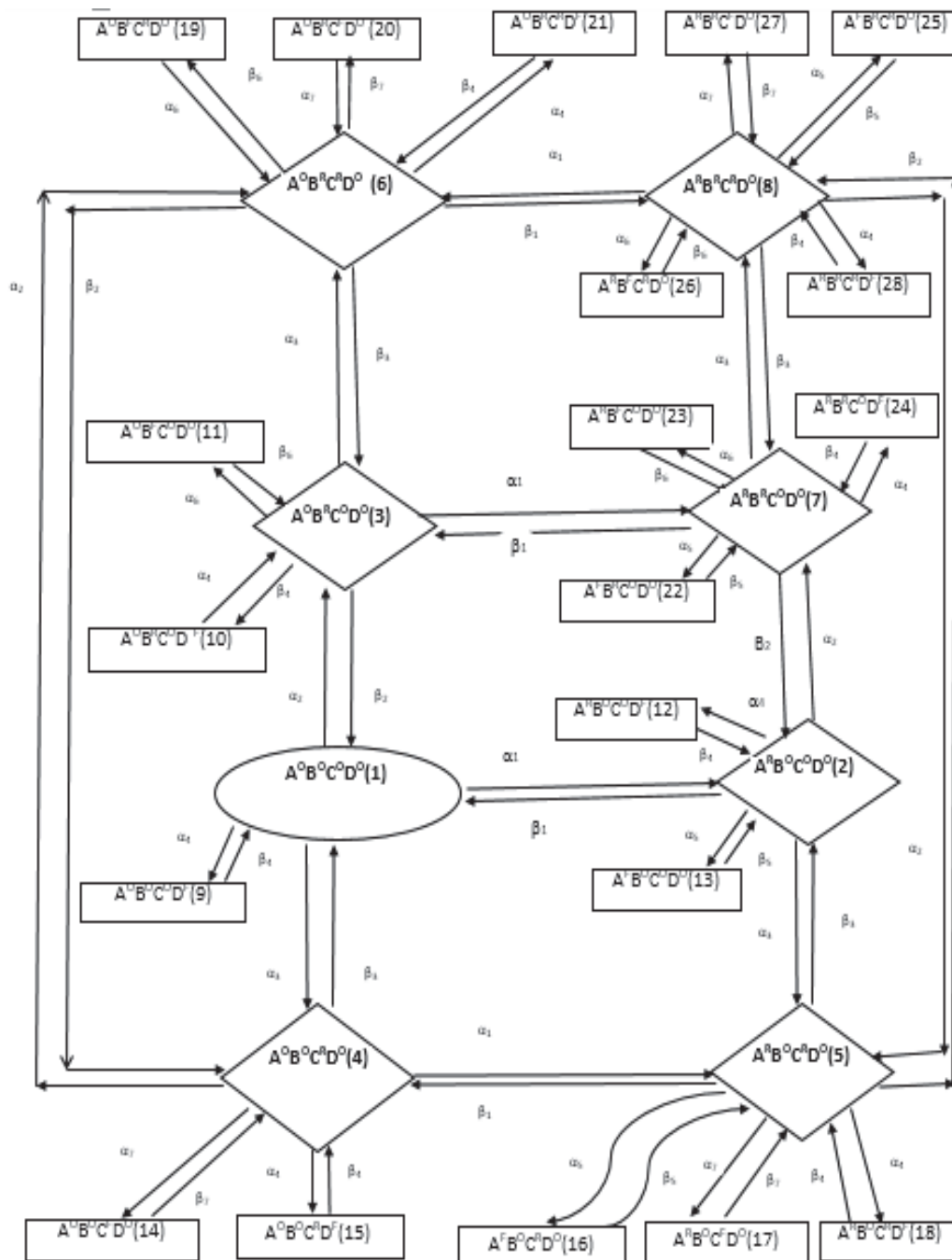


Fig. 2 State transition diagram of milling system of a rice plant

$$P_{18} = \frac{\alpha_4}{\beta_4} P_5 = \frac{\alpha_4}{\beta_4} L_{12} P_1 \quad (72)$$

$$P_{19} = \frac{\alpha_6}{\beta_6} P_6 = \frac{\alpha_6}{\beta_6} L_{13} P_1 \quad (73)$$

$$P_{20} = \frac{\alpha_7}{\beta_7} P_6 = \frac{\alpha_7}{\beta_7} L_{13} P_1 \quad (74)$$

$$P_{21} = \frac{\alpha_4}{\beta_4} P_6 = \frac{\alpha_4}{\beta_4} L_{13} P_1 \quad (75)$$

$$P_{22} = \frac{\alpha_5}{\beta_5} P_7 = \frac{\alpha_5}{\beta_5} L_{14} P_1 \quad (76)$$

$$P_{23} = \frac{\alpha_6}{\beta_6} P_7 = \frac{\alpha_6}{\beta_6} L_{14} P_1 \quad (77)$$

$$P_{24} = \frac{\alpha_4}{\beta_4} P_7 = \frac{\alpha_4}{\beta_4} L_{14} P_1 \quad (78)$$

$$P_{25} = \frac{\alpha_5}{\beta_5} P_8 = \frac{\alpha_5}{\beta_5} L_{15} P_1 \quad (79)$$

$$P_{26} = \frac{\alpha_6}{\beta_6} P_8 = \frac{\alpha_6}{\beta_6} L_{15} P_1 \quad (80)$$

$$P_{27} = \frac{\alpha_7}{\beta_7} P_8 = \frac{\alpha_7}{\beta_7} L_{15} P_1 \quad (81)$$

$$P_{28} = \frac{\alpha_4}{\beta_4} P_8 = \frac{\alpha_4}{\beta_4} L_{15} P_1 \quad (82)$$

$$L_7 = \frac{1}{T_2} \left[ \frac{\beta_2 \alpha_1}{A_6} + \frac{\alpha_1 \alpha_3 \beta_2 \beta_3}{T_5} \left( \frac{1}{A_4} + \frac{1}{A_6} \right) \left( \frac{1}{A_5} + \frac{1}{A_5} \right) \right]$$

$$L_8 = \frac{1}{T_2} \left[ \frac{\beta_3 \alpha_1}{A_4} + \frac{\alpha_1 \alpha_2 \beta_2 \beta_3}{T_5} \left( \frac{1}{A_4} + \frac{1}{A_5} \right) \left( \frac{1}{A_4} + \frac{1}{A_6} \right) \right]$$

$$L_9 = \frac{1}{T_1} \left[ \frac{L_4 (L_7 + L_1 L_8)}{1 - L_1 L_4} \left( \frac{\alpha_3}{T_4} + \frac{L_1 \alpha_2}{T_3} \right) + \frac{L_7 \alpha_2}{T_3} + \frac{L_1 L_8 \alpha_2}{T_3} + \frac{L_8 \alpha_3}{T_4} + \frac{\alpha_1}{T_2} \right]$$

$$L_{10} = (L_5 L_9 + L_6)$$

$$L_{11} = \left( L_3 L_9 + L_4 L_{10} + \frac{\alpha_2}{T_3} \right)$$

$$L_{12} = \frac{1}{A_4} \left[ L_9 \left\{ \alpha_3 + \frac{\beta_2 \alpha_1 \alpha_3}{T_5} \left( \frac{1}{A_4} + \frac{1}{A_6} \right) \right\} + L_{10} \left\{ \alpha_1 + \frac{\alpha_1 \alpha_2 \beta_2}{T_5} \left( \frac{1}{A_5} + \frac{1}{A_4} \right) \right\} + L_{11} \frac{\alpha_1 \alpha_3 \beta_2}{T_5} \left( \frac{1}{A_5} + \frac{1}{A_6} \right) \right]$$

$$L_{13} = \frac{1}{A_5} \left[ L_{11} \left\{ \alpha_3 + \frac{\beta_1 \alpha_1 \alpha_3}{T_5} \left( \frac{1}{A_4} + \frac{1}{A_6} \right) \right\} + L_{10} \left\{ \alpha_2 + \frac{\alpha_1 \alpha_2 \beta_1}{T_5} \left( \frac{1}{A_5} + \frac{1}{A_4} \right) \right\} + L_9 \frac{\alpha_2 \alpha_3 \beta_1}{T_5} \left( \frac{1}{A_4} + \frac{1}{A_6} \right) \right]$$

$$L_{14} = \frac{1}{A_6} \left[ L_9 \left\{ \alpha_2 + \frac{\beta_3 \alpha_2 \alpha_3}{T_5} \left( \frac{1}{A_4} + \frac{1}{A_6} \right) \right\} + L_{11} \left\{ \alpha_1 + \frac{\alpha_1 \alpha_3 \beta_3}{T_5} \left( \frac{1}{A_5} + \frac{1}{A_6} \right) \right\} + L_{10} \frac{\alpha_1 \alpha_2 \beta_3}{T_5} \left( \frac{1}{A_5} + \frac{1}{A_4} \right) \right]$$

$$L_{15} = \frac{1}{T_5} \left[ L_{11} \left\{ \alpha_1 \alpha_3 \left( \frac{1}{A_5} + \frac{1}{A_6} \right) + \alpha_2 \alpha_3 \left( \frac{1}{A_4} + \frac{1}{A_6} \right) L_9 \right\} + L_{10} \left\{ \alpha_1 \alpha_2 \left( \frac{1}{A_5} + \frac{1}{A_4} \right) \right\} \right]$$

$$(\beta_1 + \beta_2 + \beta_3) = A_7$$

$$(\beta_1 + \beta_2 + \alpha_3) = A_6$$

$$(\beta_3 + \beta_2 + \alpha_1) = A_5$$

$$(\beta_1 + \beta_3 + \alpha_2) = A_4$$

$$(\alpha_1 + \beta_3 + \alpha_2) = A_3$$

$$(\alpha_1 + \beta_2 + \alpha_3) = A_2$$

$$(\alpha_3 + \beta_1 + \alpha_2) = A_1$$

$$T_5 = A_7 - \frac{\beta_1 \alpha_1}{A_5} - \frac{\beta_2 \alpha_2}{A_4} - \frac{\beta_3 \alpha_3}{A_6}$$

$$T_4 = A_3 - \frac{\beta_1 \alpha_1}{A_4} - \frac{\beta_2 \alpha_2}{A_5} - \frac{\beta_2 \beta_1 \alpha_1 \alpha_2}{T_5} \left( \frac{1}{A_5} + \frac{1}{A_4} \right) \left( \frac{1}{A_5} + \frac{1}{A_4} \right)$$

$$T_3 = A_2 - \frac{\beta_1 \alpha_1}{A_6} - \frac{\beta_3 \alpha_3}{A_5} - \frac{\beta_3 \beta_1 \alpha_1 \alpha_3}{T_5} \left( \frac{1}{A_5} + \frac{1}{A_6} \right) \left( \frac{1}{A_5} + \frac{1}{A_6} \right)$$

$$T_2 = A_1 - \frac{\beta_3 \alpha_3}{A_4} - \frac{\beta_2 \alpha_2}{A_6} - \frac{\beta_2 \beta_3 \alpha_2 \alpha_3}{T_5} \left( \frac{1}{A_4} + \frac{1}{A_6} \right) \left( \frac{1}{A_4} + \frac{1}{A_6} \right)$$

$$T_1 = 1 - L_3 L_7 - L_2 L_8 - L_8 L_1 L_3 - \frac{L_4 (L_7 + L_1 L_8) (L_2 + L_1 L_3)}{1 - L_1 L_4}$$

Under Normalizing Condition (i.e. sum of all the probabilities is equal to one)

where

$$M_1 = (\alpha_1 + \alpha_2 + \alpha_3 + \alpha_4)$$

$$M_2 = (\alpha_5 + \alpha_4 + \alpha_3 + \alpha_2 + \beta_1)$$

$$M_3 = (\alpha_1 + \alpha_3 + \alpha_4 + \alpha_6 + \beta_2)$$

$$M_4 = (\alpha_1 + \alpha_7 + \alpha_4 + \alpha_2 + \beta_3)$$

$$M_5 = (\alpha_2 + \alpha_7 + \alpha_4 + \alpha_5 + \beta_3 + \beta_1)$$

$$M_6 = (\alpha_1 + \alpha_6 + \alpha_7 + \alpha_4 + \beta_3 + \beta_2)$$

$$M_7 = (\alpha_3 + \alpha_6 + \alpha_5 + \alpha_4 + \beta_1 + \beta_2)$$

$$M_8 = (\alpha_6 + \alpha_7 + \alpha_4 + \alpha_5 + \beta_3 + \beta_1 + \beta_2)$$

$$L_1 = \frac{1}{T_4} \left[ \frac{\beta_2 \alpha_3}{A_5} + \frac{\alpha_1 \alpha_3 \beta_1 \beta_2}{T_5} \left( \frac{1}{A_4} + \frac{1}{A_5} \right) \left( \frac{1}{A_5} + \frac{1}{A_5} \right) \right]$$

$$L_2 = \frac{1}{T_4} \left[ \frac{\beta_1 \alpha_3}{A_4} + \frac{\alpha_2 \alpha_3 \beta_1 \beta_2}{T_5} \left( \frac{1}{A_4} + \frac{1}{A_6} \right) \left( \frac{1}{A_4} + \frac{1}{A_5} \right) \right]$$

$$L_3 = \frac{1}{T_3} \left[ \frac{\beta_1 \alpha_2}{A_6} + \frac{\alpha_2 \alpha_3 \beta_1 \beta_3}{T_5} \left( \frac{1}{A_6} + \frac{1}{A_5} \right) \left( \frac{1}{A_4} + \frac{1}{A_6} \right) \right]$$

$$L_4 = \frac{1}{T_3} \left[ \frac{\beta_3 \alpha_3}{A_5} + \frac{\alpha_1 \alpha_2 \beta_1 \beta_3}{T_5} \left( \frac{1}{A_6} + \frac{1}{A_5} \right) \left( \frac{1}{A_5} + \frac{1}{A_4} \right) \right]$$

$$L_5 = \frac{L_2 + L_1 L_3}{1 - L_1 L_4}$$

$$L_6 = \frac{1}{1 - L_1 L_4} \left[ \frac{\alpha_3}{T_4} + \frac{L_1 \alpha_2}{T_3} \right]$$



$$\sum_{i=1}^{28} P_i = 1$$

$$P_1 = \left[ 1 + L_9 + L_{11} + L_{10} + L_{12} + L_{13} + L_{14} + L_{15} + \frac{\alpha_4}{\beta_4} + \frac{\alpha_4}{\beta_4} L_{11} + \frac{\alpha_6}{\beta_6} L_{11} + \frac{\alpha_4}{\beta_4} L_9 \right. \\ \left. + \frac{\alpha_5}{\beta_5} L_9 + \frac{\alpha_7}{\beta_7} L_{10} + \frac{\alpha_4}{\beta_4} L_{10} + \frac{\alpha_5}{\beta_5} L_{12} + \frac{\alpha_7}{\beta_7} L_{12} + \frac{\alpha_4}{\beta_4} L_{12} + \frac{\alpha_6}{\beta_6} L_{13} + \frac{\alpha_7}{\beta_7} L_{13} \right. \\ \left. + \frac{\alpha_4}{\beta_4} L_{13} + \frac{\alpha_5}{\beta_5} L_{14} + \frac{\alpha_6}{\beta_6} L_{14} + \frac{\alpha_4}{\beta_4} L_{14} + \frac{\alpha_5}{\beta_5} L_{15} + \frac{\alpha_6}{\beta_6} L_{15} + \frac{\alpha_7}{\beta_7} L_{15} + \frac{\alpha_4}{\beta_4} L_{15} \right]^{-1}$$

(83)

The steady state availability of the milling system  $A_{ss}$  is given by

$$A_{ss} = P_1 + P_2 + P_3 + P_4 + P_5 + P_6 + P_7 + P_8$$

$$A_{ss} = [1 + L_9 + L_{11} + L_{10} + L_{12} + L_{13} + L_{14} + L_{15}]P_1 \quad (84)$$

## VI. AVAILABILITY ANALYSIS

The availability analysis is carried out by taking appropriate range of failure and repair rates of all subsystems from maintenance record of milling system and detailed discussion with the maintenance personnel of the plant. The effect of various subsystems on availability of the system with various combinations of failure and repair parameters has been shown in Tables I-VII and Figs. 3-9. It also reveals the effect of failure and repair parameters of all subsystems on milling system performance.

TABLE I  
STEADY STATE AVAILABILITY VERSUS FAILURE AND REPAIR RATES OF HUSKER

$\alpha_1$	$\beta_1$	0.020	0.040	0.060	0.080	Other Constant Parameters
0.0001	0.9201	0.9399	0.9468	0.9503		$\alpha_2=0.001, \alpha_3=0.002,$
0.0002	0.8856	0.9204	0.9333	0.9400		$\alpha_4=0.003, \alpha_5=0.025,$
0.0003	0.8563	0.9025	0.9205	0.9301		$\alpha_6=0.005, \alpha_7=0.004,$
0.0004	0.8310	0.8861	0.9085	0.9260		$\beta_2=0.020, \beta_3=0.020,$
						$\beta_4=0.20, \beta_5=0.025,$
						$\beta_6=0.020, \beta_7=0.025$

TABLE II  
STEADY STATE AVAILABILITY VERSUS FAILURE AND REPAIR RATES OF HUSK SEPARATOR

$\alpha_2$	$\beta_2$	0.020	0.050	0.080	0.11	Other Constant Parameters
0.001	0.9201	0.9248	0.9261	0.9269		$\alpha_1=0.001, \alpha_3=0.002,$
0.002	0.9133	0.9216	0.9239	0.9251		$\alpha_4=0.003, \alpha_5=0.025,$
0.003	0.9071	0.9185	0.9219	0.9235		$\alpha_6=0.005, \alpha_7=0.004,$
0.004	0.9015	0.9156	0.9199	0.9220		$\beta_1=0.020, \beta_3=0.020,$
						$\beta_4=0.20, \beta_5=0.025,$
						$\beta_6=0.020, \beta_7=0.025.$

TABLE III  
STEADY STATE AVAILABILITY VERSUS FAILURE AND REPAIR RATES OF DE-STONER

$\alpha_3$	$\beta_3$	0.020	0.060	0.10	0.14	Other Constant Parameters
0.002	0.9201	0.9275	0.9291	0.9298		$\alpha_1=0.001, \alpha_2=0.001,$
0.004	0.9094	0.9228	0.9261	0.9276		$\alpha_4=0.003, \alpha_5=0.025,$
0.006	0.8997	0.9179	0.9228	0.9251		$\alpha_6=0.005, \alpha_7=0.004,$
0.008	0.8908	0.9127	0.9192	0.9223		$\beta_1=0.020, \beta_2=0.020,$
						$\beta_4=0.20, \beta_5=0.025,$
						$\beta_6=0.020, \beta_7=0.025.$

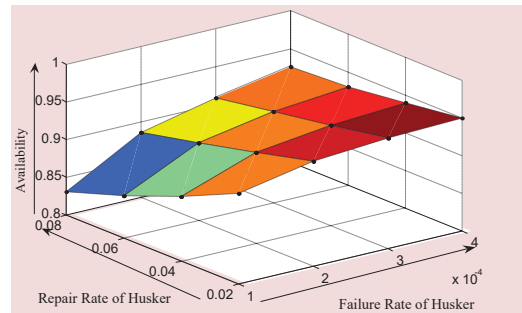


Fig. 3 Effect of failure and repair rates of husker on system availability

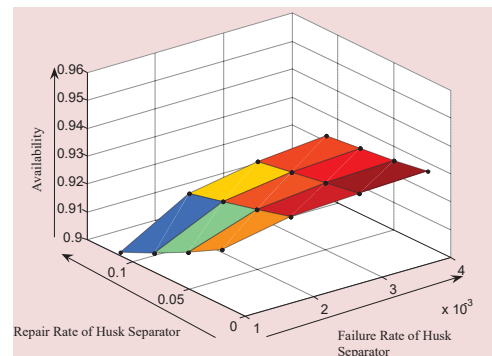


Fig. 4 Effect of Failure and Repair Rates of Husk Separator on System Availability

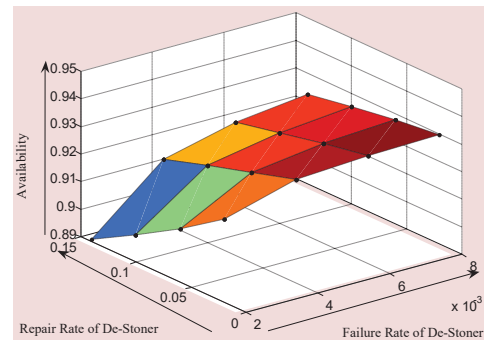


Fig. 5 Effect of Failure and Repair Rates of De-Stoner on System Availability

TABLE IV  
STEADY STATE AVAILABILITY VERSUS FAILURE AND REPAIR RATES OF PADDY CLEANER

$\alpha_4$	$\beta_4$	0.20	0.30	0.40	0.50	Other Constant Parameters
0.003	0.9201	0.9244	0.9265	0.9278		$\alpha_1=0.001, \alpha_2=0.001,$
0.005	0.9117	0.9187	0.9222	0.9244		$\alpha_3=0.002, \alpha_5=0.025,$
0.007	0.9035	0.9131	0.9180	0.9209		$\alpha_6=0.005, \alpha_7=0.004,$
0.009	0.8954	0.9076	0.9138	0.9189		$\beta_1=0.020, \beta_2=0.020,$
						$\beta_3=0.020, \beta_5=0.025,$
						$\beta_6=0.020, \beta_7=0.025.$

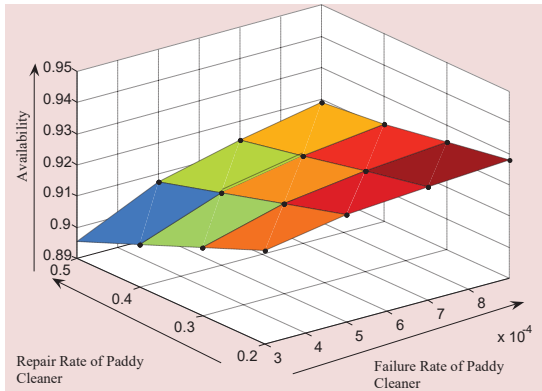


Fig. 6 Effect of Failure and Repair Rates of Paddy Cleaner on System Availability

TABLE V  
STEADY STATE AVAILABILITY VERSUS FAILURE AND REPAIR RATES OF HUSKER WORKING IN REDUCED CAPACITY

$\beta_5$	0.025	0.050	0.075	0.10	Other Constant Parameters
$\alpha_5$					
0.025	0.9201	0.9403	0.9472	0.9507	$\alpha_1=0.001, \alpha_2=0.001, \alpha_3=0.002, \alpha_4=0.003, \alpha_5=0.005, \alpha_7=0.004, \beta_1=0.020, \beta_2=0.020, \beta_3=0.020, \beta_4=0.20, \beta_5=0.020, \beta_7=0.025.$
0.030	0.9123	0.9362	0.9444	0.9486	
0.035	0.9046	0.9321	0.9417	0.9465	
0.040	0.8970	0.9281	0.9389	0.9444	

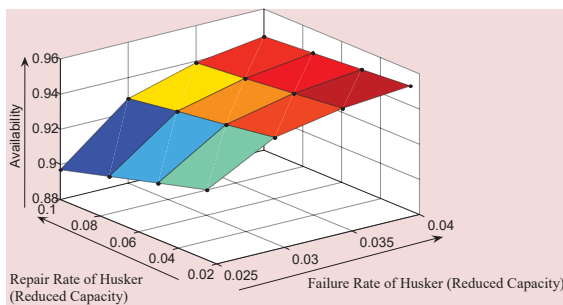


Fig. 7 Effect of Failure and Repair Rates of Husker on System Availability Working in Reduced Capacity

TABLE VI  
STEADY STATE AVAILABILITY VERSUS FAILURE AND REPAIR RATES OF HUSK SEPARATOR WORKING IN REDUCED CAPACITY

$\beta_6$	0.020	0.040	0.060	0.080	Other Constant Parameters
$\alpha_6$					
0.005	0.9201	0.9248	0.9264	0.9272	$\alpha_1=0.001, \alpha_2=0.001, \alpha_3=0.002, \alpha_4=0.003, \alpha_5=0.025, \alpha_7=0.004, \beta_1=0.020, \beta_2=0.020, \beta_3=0.020, \beta_4=0.20, \beta_5=0.025, \beta_7=0.025.$
0.006	0.9182	0.9239	0.9258	0.9268	
0.007	0.9163	0.9229	0.9252	0.9263	
0.008	0.9145	0.9220	0.9245	0.9258	

TABLE VII  
STEADY STATE AVAILABILITY VERSUS FAILURE AND REPAIR RATES OF DE-STONER WORKING IN REDUCED CAPACITY

$\beta_7$	0.025	0.050	0.075	0.10	Other Constant Parameters
$\alpha_7$					
0.004	0.9201	0.9260	0.9280	0.9290	$\alpha_1=0.001, \alpha_2=0.001, \alpha_3=0.002, \alpha_4=0.003, \alpha_5=0.025, \alpha_6=0.005, \beta_1=0.020, \beta_2=0.020, \beta_3=0.020, \beta_4=0.20, \beta_5=0.025, \beta_6=0.020,$
0.005	0.9172	0.9245	0.9270	0.9283	
0.006	0.9142	0.9231	0.9260	0.9275	
0.007	0.9113	0.9216	0.9250	0.9268	

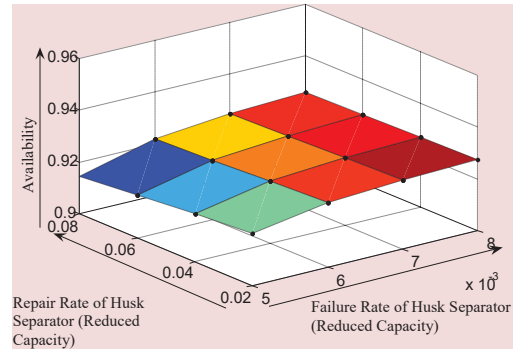


Fig. 8 Effect of Failure and Repair Rates of Husk Separator on System Availability Working in Reduced Capacity

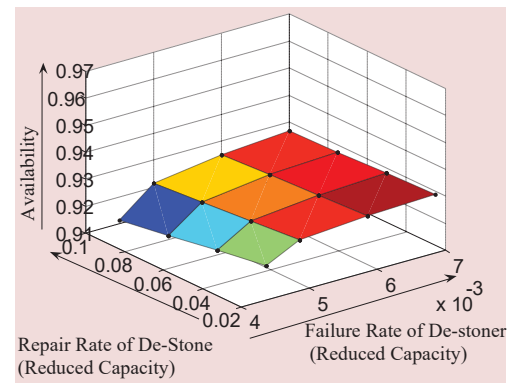


Fig. 9 Effect of Failure and Repair Rates of De-Stoner on System Availability Working in Reduced Capacity

## VII. RESULTS AND DISCUSSION

From analysis part, it is found that increase in the failure and repair rates of Husker, Husk Separator, De-Stoner and Paddy Cleaner affects the availability of the system and needs to be controlled. Table I and Fig. 3 show the effect of failure and repair rate of Husker on the long run availability of milling system, as the failure rate ( $\alpha_1$ ) increases from 0.0001 to 0.0004 the system availability reduces considerably by 9.7%. Similarly, as the repair rate ( $\beta_1$ ) increases from 0.020 to 0.080, the system availability significantly improves by 3.3%.

Table II and Fig. 4 reveal the effect of failure and repair rates of Husk Separator on the availability of milling system, as the failure rate ( $\alpha_2$ ) increases from 0.001 to 0.004 the system availability reduces by 2.0%. Similarly, as the repair rate ( $\beta_2$ ) increases from 0.020 to 0.11 the system availability hardly increases by 0.8%.

Table III and Fig. 5 depict the effect of failure and repair rates of the De-Stoner on the availability of milling system, as the failure rate ( $\alpha_3$ ) of DeStoner increases from 0.002 to 0.008 the system availability decreases by 3.2%. Similarly, as the repair rate ( $\beta_3$ ) increases from 0.020 to 0.14 the system availability increases by 1.1%.

Table IV and Fig. 6 highlight the effect of failure and repair rates of the Paddy Cleaner on the availability system, as the failure rate ( $\alpha_4$ ) of Paddy Cleaner increases from 0.001 to 0.004 the system availability decreases by 2.7%. Similarly, as



the repair rate ( $\beta_4$ ) increases from 0.020 to 0.50 the system availability increases by 0.8% only.

Table V and Fig. 7 explain the effect of failure and repair rates of the Husker working in reduced state on the availability of the system, as the failure rate ( $\alpha_5$ ) of Husker increases from 0.025 to 0.040 the availability decreases by 2.5%. Similarly, as the repair rate ( $\beta_5$ ) increases from 0.025 to 0.10 the system availability increases by 3.3%.

Table VI and Fig. 8 reveal the effect of failure and repair rates of the Husk Separator working in reduced state on the availability of system, as the failure rate ( $\alpha_6$ ) of Husk Separator increases from 0.005 to 0.008 the availability decreases by 0.6%. Similarly, as the repair rate ( $\beta_6$ ) increases from 0.020 to 0.080 the system availability increases by 0.8%.

Table VII and Fig. 9 depict the effect of failure and repair rates of the De-Stoner working in reduced state on the availability of the system, as the failure rate ( $\alpha_7$ ) of De-Stoner increases from 0.004 to 0.007 the availability decreases by 1.0%. Similarly, as the repair rate ( $\beta_7$ ) increases from 0.025 to 0.10 the system availability improves by 1.7%.

### VIII. CONCLUSIONS AND FUTURE WORK

In this paper, we mainly focus on the availability analysis and maintenance repair priorities of the system using Markov approach with exponential subsystem failure and repair rates. The results are shown in Tables I-VII. They are derived to assist the maintenance decisions where repair priorities should be given to subsystems of rice milling section. It is clearly shown from Table VIII that the Husker is the most critical subsystem as far as repair aspect is concerned and hence given top priority. The De-Stoner should be given second priority as the effect of its failure and repair rates on the system availability is much higher than that of Paddy Cleaner and Husk Separator. Therefore, on the basis of above analysis, the repair priorities have been suggested as shown in Table VIII.

TABLE VIII

REPAIR PRIORITIES FOR MILLING SYSTEM OF A RICE MILLING PLANT

Subsystem	Failure Rates	Decrease in Availability	Repair Rates	Increase in Availability	Suggested Repair Priority
Husker	0.0001 to 0.0004	9.7%	0.020 to 0.080	3.3%	I
De-Stoner	0.002 to 0.008	3.2%	0.020 to 0.14	1.0%	II
Paddy Cleaner	0.003 to 0.009	2.7%	0.2 to 0.5	0.8%	III
Husk Separator	0.001 to 0.004	2.0%	0.020 to 0.11	0.7%	IV

One of the main limitations of our model is the exponentially distributed failure and repair rates, which are assumed to carried out the performance analysis of system under study. We admit that if numbers of subsystems are more, computing the performance may take much more time. Finding less computational methods to address the problem might also be suitable for future work.

### REFERENCES

- [1] Azaron, A., Perkgoz, C., Katagiri, H., Kato, K., and Sakawa, M. *Multi-objective reliability optimization for dissimilar-unit cold-standby systems using a genetic algorithm*. Journal of Computer Operation and Research. 2009. 3: p. 1562-1571.
- [2] Balaguruswamy E (1984) *Reliability Engineering*, Tata McGraw Hill.
- [3] Barabadi, A., Barabadi, J. and Markeset, T, *Application of reliability models with covariates in spare part prediction and optimization – A Case Study*. International Journal of Reliability Engineering System and Safety. 2014. 123: p. 1-7.
- [4] Coit, D. W., Jin, T. and Wattanapongsakorn, N., *System optimization considering component reliability estimation uncertainty: A multi-criteria approach*, IEEE Transaction on Reliability. 2004. 53(3): p. 369-380.
- [5] Cekyay, B. and Ozekici, S., *Reliability, MTTF and steady-state availability analysis of systems with exponential lifetimes*, Applied Mathematical Modeling, 2015. 39: p. 284-296.
- [6] Doostparast, M., Mohammad, D. and Kolahan, F., *A reliability based approach to optimize preventive maintenance scheduling for coherent system*, International Journal of Reliability and System Safety. 2014.126: p. 198-206.
- [7] Dhillon, B. S. and Singh, C., *Engineering Reliability: New Techniques and Applications*. John Wiley and Sons, New York
- [8] Gupta, P., Lal, A., Sharma, R. and Singh, J., *Numerical analysis of reliability and availability of series process in butter oil processing plant*, International Journal of Quality and Reliability Management. 2005. 22(3): p. 303-316.
- [9] Garg, D., Singh, J. and Kumar, K., *Performance analysis of a cattle feed plant*, The IUP Journal of Science and Technology. 2009. 5(2): p. 83-94.
- [10] Garg, S., Singh, J. and Singh, D. V., *Availability and maintenance scheduling of a repairable block-board manufacturing system*, International Journal of Reliability and System Safety., 2010. 4(1): p.104-118.
- [11] Garg, Harish and Sharma, S.P., *Stochastic behavior analysis of complex repairable industrial systems utilizing uncertain data*, ISA Transactions, 2012. 51: p. 752-762.
- [12] Gowid, S., Dixon, R. and Ghani, S., *Optimization of reliability and maintenance of liquefaction system on LNG terminal using Markov modeling*, International Journal of Quality Reliability and Management, 2014. 31(3): p. 293-310.
- [13] Harish, Garg and Monica, Rani., *An approach for reliability analysis of industrial systems using PSO an IFS technique*. ISA Transaction, 2013. 52: p. 701-710.
- [14] Hou Y., Sallak, M. and Schon, W., *Availability analysis of systems using random set theory*, IFAC-Papers Online. 2015. 48: p. 1315-1320.
- [15] Kajal, S., Tewari, P. C. and Kaushik, D., *Decision support system for butter oil system of a dairy plant at NDRI*, The IUP Journal of Science and Technology. 2010. 6(1): p. 63-71.
- [16] Kajal, S., Tewari, P. C. and Saini, P., *Availability optimization for coal handling system using genetic algorithm*, International Journal of Performability Engineering, 2013. 9(1): p.109-116.
- [17] Khanduja, R., Tewari, P. C. and Chauhan, R., S., *Performance modeling and optimization for the stock preparation unit of a paper plant using genetic algorithm*, International Journal of Quality Reliability and Management. 2012. 28(6): p. 688- 703.
- [18] Khanduja, R., Tewari, P. C. and Mahesh, Gupta, *Performance enhancement for crystallization unit of sugar plant using genetic algorithm technique*, Journal of Industrial Engineering International, 2012. 28(60): p. 688-703.
- [19] Kumar, S., Tewari, P. C. and Kumar, S., *Performance evaluation and availability analysis of ammonia synthesis unit in a fertilizer plant*, Journal of Industrial Engineering International. 2009. 5(9): p.17-26.
- [20] Kumar, S., Tewari, P. C. and Sharma, R., *Simulated availability of CO<sub>2</sub> cooling system in a fertilizer plant*, Industrial Engineering Journal. 2007. 36(10): p.19-23.
- [21] Kumar, S. and Tewari, P. C., *Mathematical modeling and performance optimization of CO<sub>2</sub> cooling system of a fertilizer plant*, International Journal of Industrial Engineering Computation. 2011.2(3): p. 689-698.
- [22] Modgil V., Sharma, S. K. and Singh J., *Performance modeling and availability analysis of shoe upper manufacturing unit*, International Journal of Quality Reliability and Management. 2013. 30(8): p. 816-831.
- [23] Sachdeva, A., Kumar, D. and Kumar, P., *Planning and optimizing the maintenance of paper production systems in a paper plant*, Computer and Industrial Engineering. 2008. 55: p.817-829.

- [24] Sabouhi, H., Abbaspour A., Firuzabad, M. and Dehghanian, P., *Reliability modeling and availability analysis of combined cycle power plants*, Electrical Power and Energy Systems. 2016. 79: p.108–119.
- [25] Shahrzad, F. R., Xie, M., Kien, M.N. and Richard, C.M.Y., *Dynamic availability assessment and optimal component design of multi-state weighted k-out-of-n system*, International Journal of Reliability and System Safety. 2014. 123(3): p. 57-62.
- [26] Ying-Shen, J., Shui-Shun, L. and Hsing-Perk, K., *A knowledge management system for series-parallel availability optimization and design*, Journal of Expert System and Applications. 2008. 34: p. 181-193.
- [27] Vora, Y., Patel, M.B., and Tewari, P.C., *Simulation model for stochastic analysis and performance evaluation of steam generator system of a thermal power plant*, International Journal of Engineering Science and Technology. 2011. 3(6): p. 5141-5149.
- [28] Zhang, H., Innal, F., Dufour, F. and Dutuit, Y., *Piecewise deterministic markov processes based approach applied to an offshore oil production system*, International Journal of Reliability and System safety. 2014. 126(3): p. 126-134.

**Dr. P.C Tewari** is working as Professor in the Department of Mechanical Engineering in National Institute of Technology, Kurukshetra, India. He has about 27 years of teaching and research experience. He completed his Bachelor and Master Degree in Mechanical Engineering from I.I.T., Roorkee, (Formerly University of Roorkee) Utrakhnad and Doctorate in Mechanical Engineering from Kurukshetra University, Kurukshetra. There are more than 150 research publications in refereed National and International Journals and Conferences to his credit. He has supervised 07 Ph.D. and 08 are in progress. He also guided about 25 M. Tech. dissertations. He is life member of I.S.T.E. and I.S.T.A.M. His areas of Academics and Research are Performance Evaluation and Optimization, System Behavioral Analysis, Reliability and Maintenance Resource Allocation He has been a member of reviewer committee for Institution of Engineers Journal of Production Engineering and International Journal of Quality and Reliability Management.

**Parveen Kumar** is working as Lecturer in the Department of Mechanical Engineering in G.B.N. Govt. Polytechnic, Nilokheri, Haryana, India. He has about 12 year of teaching experience of diploma and degree courses. He completed his Bachelor Degree in Mechanical Engineering from Kurukshetra University, Kurukshetra and Master Degree in Manufacturing System Engineering from Punjab Technical University, Jalandhar, Punjab (S.L.I.E.T.). Presently Research Scholar (Part-Time) in Department of Mechanical Engineering National Institute of Technology, Kurukshetra, India. There are 06 research publications in refereed National and International Journals and Conferences to his credit.