

Risk Assessment of Particulate Matter (PM₁₀) in Makkah, Saudi Arabia

Turki M. Habeebullah, Atef M. F. Mohammed, Essam A. Morsy

Abstract—In recent decades, particulate matter (PM₁₀) have received much attention due to its potential adverse health impact and the subsequent need to better control or regulate these pollutants.

The aim of this paper is focused on study risk assessment of PM₁₀ in four different districts (Shebikah, Masfalah, Aziziyah, Awali) in Makkah, Saudi Arabia during the period from 1 Ramadan 1434 AH - 27 Safar 1435 AH. Samples were collected by using Low Volume Sampler (LVS Low Volume Sampler) device and filtration method for estimating the total concentration of PM₁₀.

The study indicated that the mean PM₁₀ concentrations were 254.6 (186.1 - 343.2) µg/m³ in Shebikah, 184.9 (145.6 - 271.4) µg/m³ in Masfalah, 162.4 (92.4-253.8) µg/m³ in Aziziyah, and 56.0 (44.5 - 119.8) µg/m³ in Awali. These values did not exceed the permissible limits in PME (340 µg/m³ as daily average). Furthermore, health assessment is carried out using AirQ2.2.3 model to estimate the number of hospital admissions due to respiratory diseases. The cumulative number of cases per 100,000 were 1534 (18-3050 case), which lower than that recorded in the United States, Malaysia. The concentration response coefficient was 0.49 (95% CI 0.05 - 0.70) per 10 µg/m³ increase of PM₁₀.

Keywords—Air pollution, Respiratory diseases, AirQ2.2.3, Makkah.

I. INTRODUCTION

PARTICULATE matter can be categorized into primary and secondary aerosols: i) Primary aerosols include emission from pilot power plants, auto mobile exhaust, sea spray, and dust storm, and are emitted into the atmosphere directly from the source. ii) Secondary aerosols are produced in the atmosphere from reactions involving primary or secondary gases [1]-[3]. Airborne particles, especially fine particles are found to be widely associated with health problems, [4], [5]. Rapid industrialization and urbanization in the past decade has resulted in a world-wide increase of airborne particulate matters [6], which are responsible for the reduction in visibility in urban areas [7] and can adversely affect human health [8].

The physical characteristics of airborne particulate matter, such as size distribution and mass concentration of the dust are more. It is known that particulate matter is an important marker

for measuring air quality, as evidence of their presence and the presence of contaminants in the air. Particles are formed in the atmosphere from natural and artificial sources, also made up of condensation of gases and vapors in the air [8]-[10]. Particulate matter, especially inhaled dust (less than 10 microns) spread to the atmosphere from a variety of sources, including vehicular traffic, industrial processes, home heating, and cooking [11].

Most of the health damage caused by exposure to particles suspended caused by nanoparticle at a young age, less than 10 ppm and penetrate these particles way until you reach the lung, causing different symptoms such as asthma, cough etc. (Fig. 1).

Most of these suspended particles be the result of incomplete combustion include ash, soot and carbon compounds. In addition to the suspended particles is comprising acidic condensates and metals such as lead, cadmium sulfate and nitrate. If the amount of dust or particles that reach the respiratory tract in the acceptable limits it is possible to get rid of 95% of them by the defense systems of the respiratory system.

In recent decades, PM₁₀ have received much attention due to its potential adverse health impact and the subsequent need to better control or regulate these pollutants. PM₁₀ can penetrate into the lungs more readily and is therefore more likely to increase respiratory and mutagenic diseases [11]. Exposure to particulate matter can aggravate chronic respiratory and cardiovascular diseases, alter host defenses, damage lung tissue, lead to premature death, and possible contribute to cancer [12], [13].

Higher activities of pilgrims in Hajj and Umrah season can also lead to increase particulate concentrations, generated from traffic emission, fuel evaporations, aerosols transfer and various anthropogenic activities in Makkah City.

The main aim of this research is to study the risk assessment of particulate matter with aerodynamic diameter of 10 micron or less (PM₁₀) in four districts in Makkah, Saudi Arabia: Shebikah, Masfalah, Aziziyah, and Awali during the period from 1 Ramadan 1434 AH 27 to Safar 1435 AH. Furthermore, the current study use AirQ2.2.3 model to estimate the number of hospital admissions due to respiratory diseases for each concentration range and each relative risk for the sampling site.

II. MATERIAL AND METHODS

A. Study Area and Sampling Description

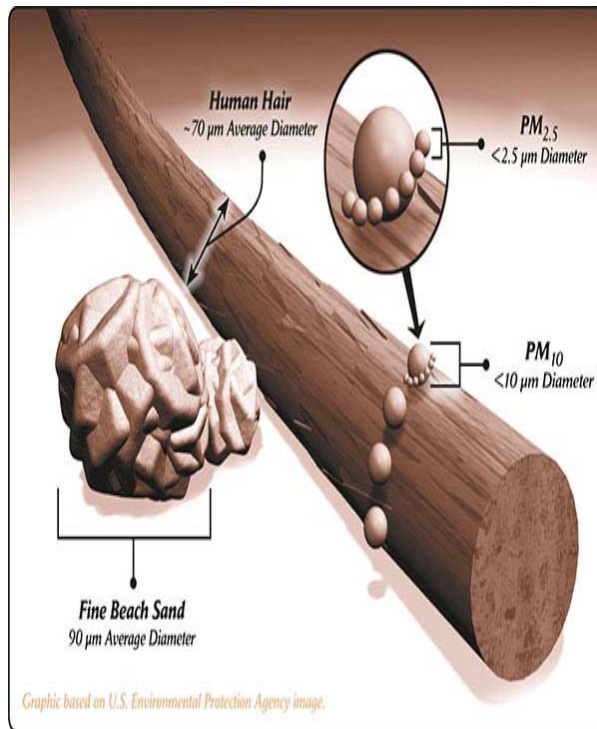
The Holy City of Makkah (Latitude 21° 25' 19" North, longitude 39° 49' 46") is at an elevation of 277 m above sea

Turki M. Habeebullah and Essam A. Morsy are with The Custodian of the Two Holy Mosques Institute for Hajj and Umrah Research, Umm Al-Qura University, Makkah, Saudi Arabia (phone: +966-560033454, +966-559538459; fax: +9660125573282; e-mail: t_habeebullah@yahoo.com, e_morsy1@yahoo.com).

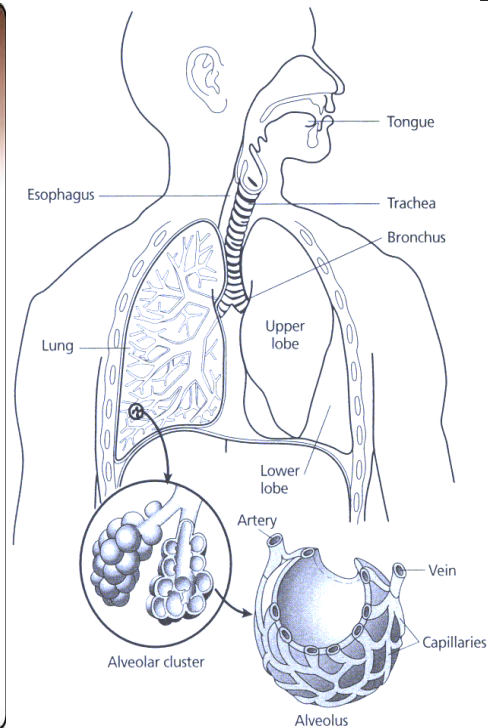
Atef M.F. Mohammed is with The Custodian of the Two Holy Mosques Institute for Hajj and Umrah Research, Umm Al-Qura University, Makkah, Saudi Arabia, and Author with Air pollution Department, National Research Center, Cairo, Egypt. (phone: +966-548598900; fax: +9660125573282; e-mail: ateffathy2006@yahoo.com).

level, and approximately 80 km inland from the Red Sea. The city is situated between mountains, which have defined the contemporary expansion of the city with a population of 1,700,000 [14]. The area around Al-Haram comprises the old city. Transportation facilities, either personal vehicles or private taxis, related to the Hajj and/or Umrah are the main services available around the city. Sampling locations

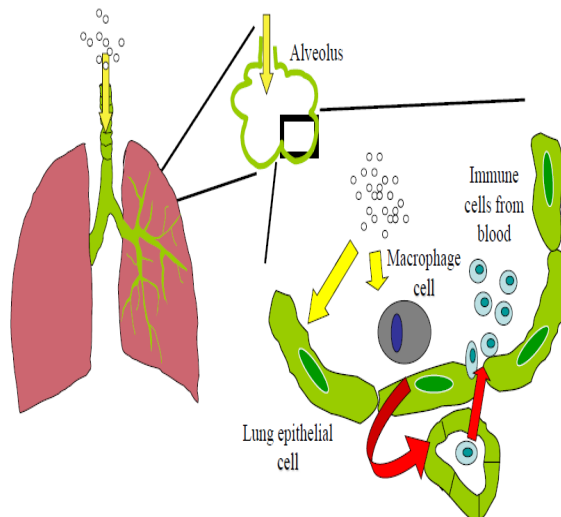
included four different districts: i) Shebikah in the central region near Al-Haram. ii) Masfalah District is characterized by high traffic densities. iii) Aziziyah District is considered as residential area of high population density. iv) Awali District considered as residential area of low population density (as shown in Fig. 2).



(a) PM Diameters compared with Human Hair Diameter



(b) PM inside Lung



(c) PM inside Alveolus

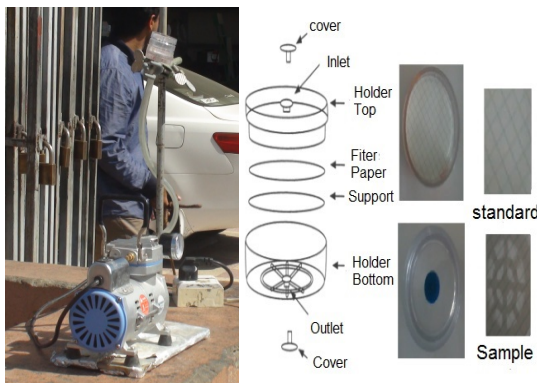
Fig. 1 Particulate Matter and inhaled path in the lungs



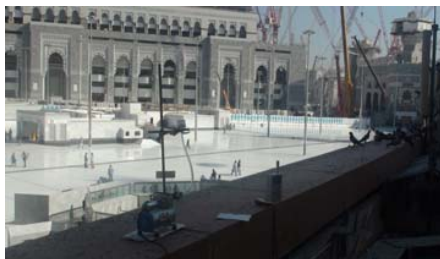
Fig. 2 A map showing sampling locations

B. Sampling Method

The study monitored the concentrations of respirable particulate (PM_{10} , less than 10 microns) using a device all the dust pectoral low volume LVS (Low Volume Sampler) and manufactured by the German Beco (Beco R300) and after calibration device and the use of filters nitrate cellulose size of 0.45 microns for dust least 10 micrometers (Fig. 3). Samples were collected weekly during the period from 1 Ramadan 1434 AH - 27 Safar 1435 AH, collecting a total of 30 samples. The sampling time was 24 h, yielding sample air volumes about 2.9 m^3 .



(a) Low Volume Sampler

(b) PM_{10} holder

(c) Sampling location at Shebikah

Fig. 3 Low Volume Sampler and PM_{10} holder

Filtration method was used for estimating the total concentration of PM_{10} . Where filter paper is weighted in the laboratory before sampling, and then transported carefully to sampling holder. After sampling the loaded filter is carefully transfer to the laboratory, where it is weighed to constant weight. The difference in weight before and after sampling is equal to weight of PM_{10} collected. PM_{10} concentrations can be calculating by using the sample air volumes and the weight of PM_{10} collected and expressed as $\mu\text{g}/\text{m}^3$ [15].

C. Risk Assessment of PM_{10}

The inhalation dose would be calculated to PM_{10} collected in Makkah during the period from 1 Ramadan 1434 AH - 27 Safar 1435 AH, by using (1) [16].

$$I = (C * DPR * A * EF * ED * 1e-6) / AT \quad (1)$$

where; I: Inhalation dose (mg/kg/day) (From (1)), C: The concentration of PM_{10} ($\mu\text{g}/\text{m}^3$) (PM_{10} concentrations), BDR: Daily breathing rate (L/kg/day) (393 L/kg/day), A: Inhalation absorption factor (Equal to 1), EF: Exposure rate (day/year) (365 day/year), ED: Exposure duration (years) (70 years), $1e-6$: Inhalation coefficient (0.000001), AT: The average exposure period (day) (25550 Day).

Also, lung cancer risk as a result of exposure to PM_{10} inhalation dose would be calculated by using (2) [16].

$$ICR = (I * CPF) \quad (2)$$

where; I: Inhalation dose (mg/kg/day) (From (1)), CPF: Cancer power factor (1.098).

D. AirQ2.2.3 Model Inputs

The AirQ2.2.3 model is based on a risk assessment approach, which combines data on concentration-response functions with data on population exposure to calculate the extent of health effects expected to result from exposure to a particulate matter (here PM_{10}). The information on concentration-response functions is provided by WHO [17],

obtained from the epidemiological literature and expressed as relative risk for several health effects, such as premature mortality or hospital admission. Data on population exposure comprise population data, incidence rates for specific health effect and air quality data. The user has to provide the data on population exposed to air pollution. The model needs the following input data:

- 1) Personal data such as country name, year of study, address of the area of investigation, city name, email and telephone number of user and responsible person.
- 2) Pollutant data such as type of pollutant (in this study pollutant considered was PM_{10}), Makkah city coordinates (Latitude 21.43N and Longitude 39.82E), exposed population (2700000 pilgrim +1800000 resident) and number of stations used for profile (1) [18].
- 3) Air quality data such as mean and maximum (for each site) and cumulative concentrations which ranged from $< 10 \mu\text{g}/\text{m}^3$ to $\geq 400 \mu\text{g}/\text{m}^3$.
- 4) Calculate Relative Risk (RR) manually using (3) [13].

$$RR = \exp [B(X-X_0)] \quad (3)$$

where; $B = 0.0006 - 0.0010$ (mean 0.0008), X = Annual mean PM_{10} concentration ($\mu\text{g}/\text{m}^3$), X_0 = Baseline (Threshold) concentration ($\mu\text{g}/\text{m}^3$).

- 5) In (3), high and the mean value of constant B were used to estimate low, high and mean relative risk. Furthermore, instead of baseline concentration, Daily air quality standard of PME for PM_{10} was used, which is $340 \mu\text{g}/\text{m}^3$ [19]. The following information were also required to run the model: Health data such as health end point (hospital admissions due to respiratory diseases), baseline incidence (3872 case per 100000 person per year) [20], relative risk (mean, lower and upper) from previous equation, and scientific certainty of relative risk.

E. AirQ2.2.3 Model Output

AirQ2.2.3 model estimates impacts such as cumulative number of cases per 100,000 persons for each concentration range and each relative risk for each site and calculates hospital admissions due to respiratory diseases.

III. RESULTS AND DISCUSSION

A. PM_{10}

Fig. 4 shows that Respirable particulate matter concentrations compared with Presidency of Meteorology and Environment (PME) Daily standard. It reported that the mean concentrations of PM_{10} were 254.6 ($186.1 - 343.2$) $\mu\text{g}/\text{m}^3$ in Shebikah, 184.9 ($145.6 - 271.4$) $\mu\text{g}/\text{m}^3$ in Masfalah, 162.4 ($92.4 - 253.8$) $\mu\text{g}/\text{m}^3$ in Aziziyah, and 56.0 ($44.5 - 119.8$) $\mu\text{g}/\text{m}^3$ in Awali. These values did not exceed the permissible limits in PME ($340 \mu\text{g}/\text{m}^3$ as daily average) [19].

These PM_{10} concentrations in Shebikah may be attributed to Expansive of Al-Haram Al-Sharif, especially in the areas of east and North arenas which contain construction activities, traffic of trucks and heavy equipment. In Masfalah, PM_{10} concentrations may be attributed to high traffic density. In Aziziyah, PM_{10} concentrations may be attributed to high density of population, human activities, and construction activities. While in Awali, low PM_{10} concentrations may be attributed to low population density.

Table I shows a comparison between PM_{10} concentrations from the current study and PM_{10} concentrations in different cities around the world countries where were low than that found in Nanjing ($682.0 \mu\text{g}/\text{m}^3$) and Beijing ($506.9 \mu\text{g}/\text{m}^3$) in China [21].

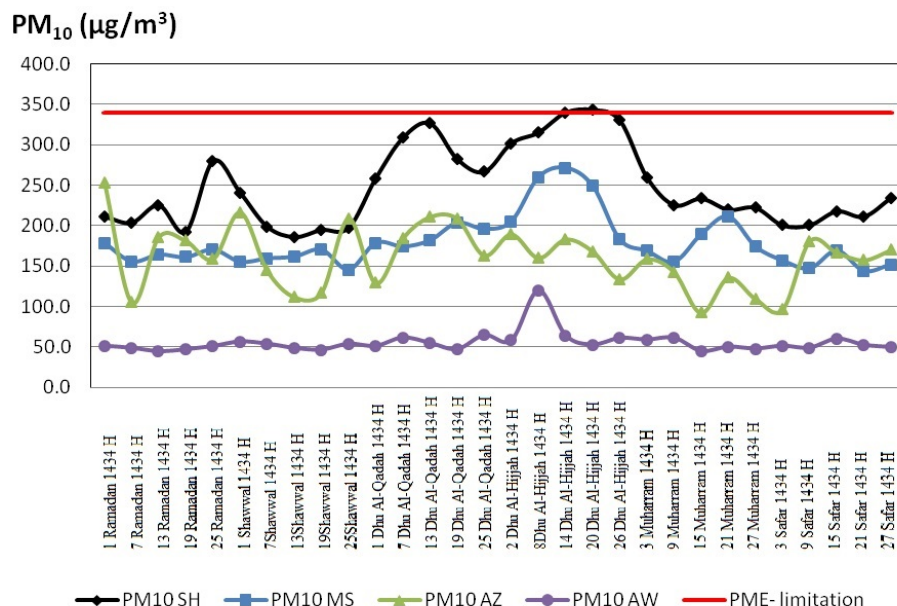


Fig. 4 PM_{10} concentrations at four locations in Makkah city ($\mu\text{g}/\text{m}^3$) during the period from 1 Ramadan, 1434 AH - 27 Safar 1435 AH

TABLE I
PM₁₀ CONCENTRATIONS COMPARED WITH DIFFERENT CITIES AROUND THE
WORLD COUNTRIES [17], [21]

Country		PM ₁₀ (µg/m ³)
Saudi Arabia	The current study	
	Shebikah	186.1 - 343.2
	Masfalah	145.6 - 271.4
	Aziziyah	92.4 - 253.8
China	Awali	44.5 - 119.8
	Makkah	145.4
	Nanjing	682.0
India	Beijing	506.9
	Ahmedabad	171.0
Taiwan	Chaouco	115.0
Turkey	Mersin	26.7
Switzerland	Bern	40.2
Italy	Monte Simon	16.0
Greece	Athens	44.1
Brazil	Rio Digniero	34.4
Tanzania	San Polo	38.0
	Dar es Salaam	69.0

B. Risk Assessment of PM₁₀

Fig. 5 showed that the inhalation dose of exposure to PM₁₀ concentrations during the period from 1 Ramadan 1434 AH- 27 Safar 1435 AH. Where, inhalation doses were 0.097 (0.073 -0.135 mg/kg/day) in Shebikah, 0.071 (0.057-0.107 mg/kg/day) in Masfalah, 0.063 (0.036 -0.100 mg/kg/day) in Aziziyah, and 0.22 (0.017- 0.047 mg/kg/day) in Awali. This is due to high density of pilgrims and buses that take them from the hotel to Al-Haram al-Sharif and the holy sites and return them again. Also, Fig. 5 shows that low inhalation dose in Awali location during sampling period, except during 8 and 9 Zu-Elhijjah, this due to a significant increase of the movement of pilgrims and buses bound for Arafat to perform Hajj.

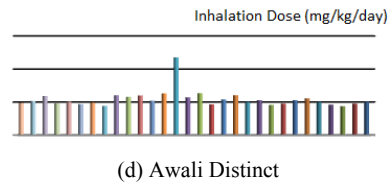
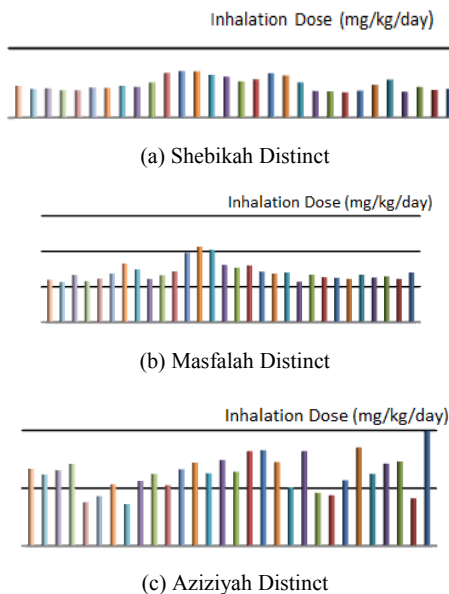


Fig. 5 Inhalation Dose of PM₁₀ concentration (mg/kg/day) during the period from 1 Ramadan, 1434 AH - 27 Safar 1435 AH

Fig. 6 shows that lung cancer risk as a result of exposure to PM₁₀ inhalation during the period from 1 Ramadan, 1434 AH - 27 Safar 1435 AH. It were 0.11 (0.08 - 0.15) in Shebikah, 0.08 (0.06-0.12) in Masfalah, 0.07 (0.04-0.11) in Aziziyah, and 0.02 (0.02-0.05) in Awali. This is due to high density of pilgrims and buses that take them from the hotel to Al-Haram al-Sharif and the holy sites and return them again. Also, Fig. 5 shows that low inhalation dose in Awali location during sampling period, except during 8 and 9 Zu-Elhijjah, this due to a significant increase of the movement of pilgrims and buses bound for Arafat to perform Hajj.

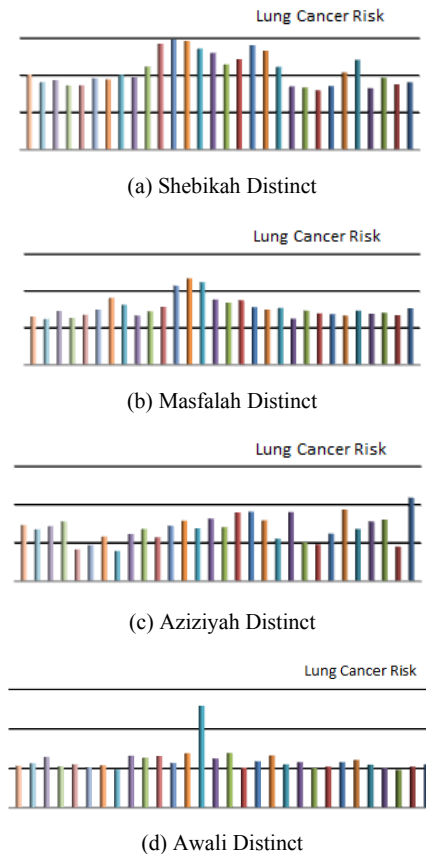


Fig. 6 Lung cancer risk as a result of exposure to PM₁₀ inhalation during the period from 1 Ramadan, 1434 AH - 27 Safar 1435 AH

C. AirQ2.2.3 Model

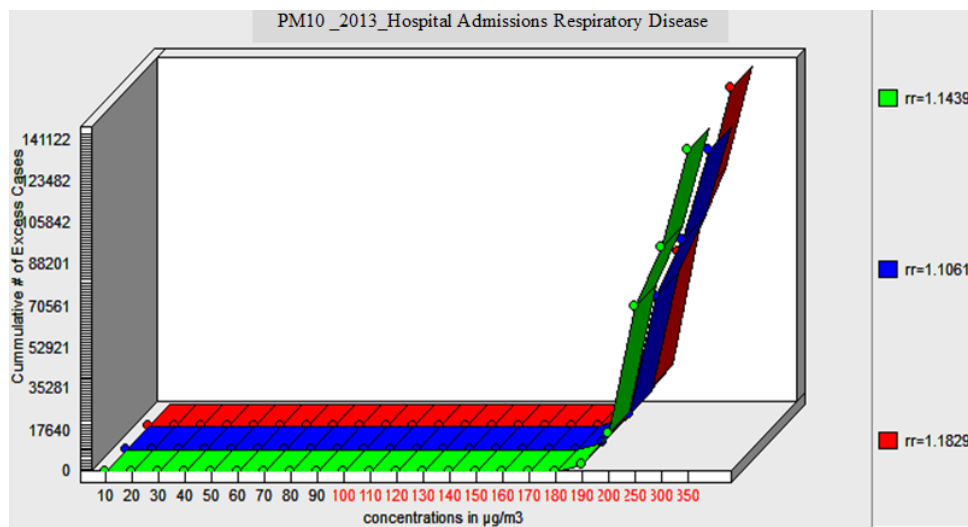
Results AirQ2.2.3 model predicted that the number of hospital admissions due to respiratory diseases as a result of exposure to concentrations of PM₁₀ measured in the current

study, to be the number of hospital admissions due to system diseases Respiratory in every 100,000 people were (361-3050 case) in Shebikah, (177-2298 case) in Masfalah, (72-1982 case) in Aziziyah, and (18-70 case) in Awali (as shown in Fig. 7).

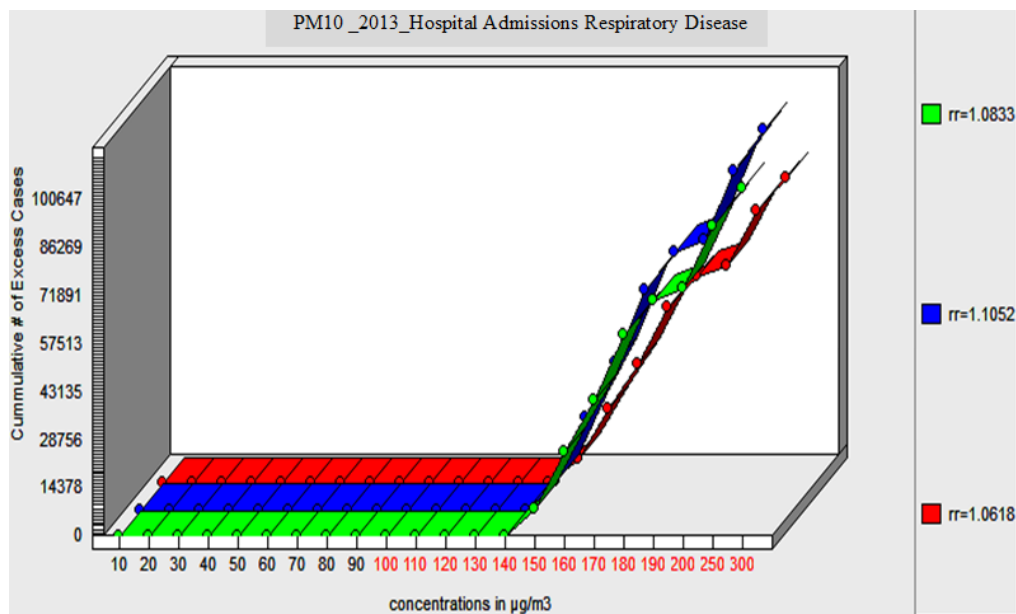
AirQ2.2.3 model results also shows that the response concentration factor (95% CI) was 0.53 (0.11-0.95%), 0.70 (0.33-1.06%), 0.68 (0.37-0.99%), 0.05 (0.06-0.04%) in Shebikah, Masfalah, Aziziyah, and Awali, respectively, per 10 $\mu\text{g}/\text{m}^3$ increase. These values were lower than that observed in Cairo, Egypt 4.1 (4-4.2) and in Tallinn - Estonia 1.14% (0.62-1.67), while it is higher than that observed in Shanghai, China 0.23 (0.03-0.48), in north China 0.036 (0.06 - 0.012) [22]-[26].

Comparing the results of the current study 1534 (18-3050 case) in every 100,000 people in all locations with that recorded in different countries around the world, it were less than that recorded in the United States (8970 cases per 100,000 people), in Malaysia (2003 in the case of every 100,000 people). But it was higher than that has been recorded in China (1240 in the case of every 100,000 people) [22], [27]-[32].

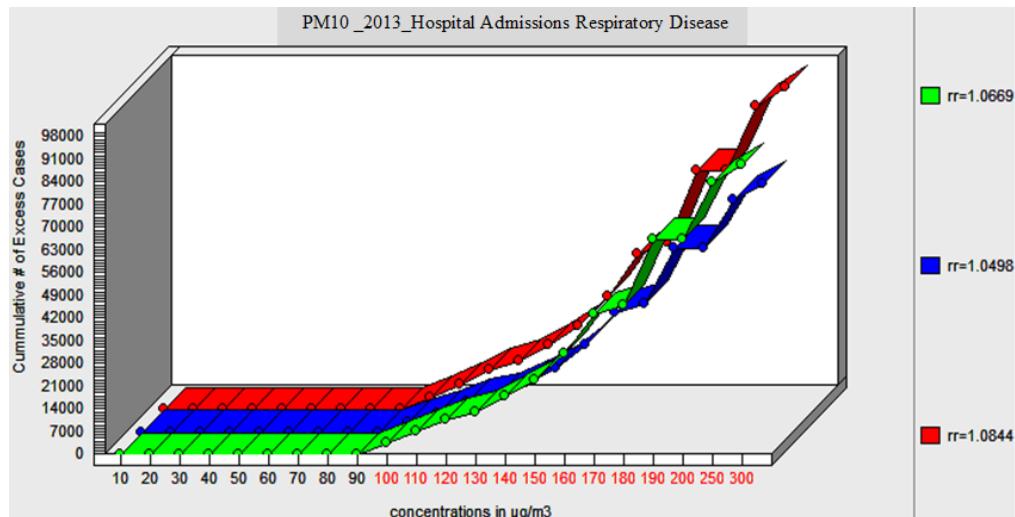
Finally, Studies on inhaled PM_{10} and their relationship to the number of hospital admissions due to respiratory diseases need more time and study to verify that they are the main cause of respiratory diseases in Makkah.



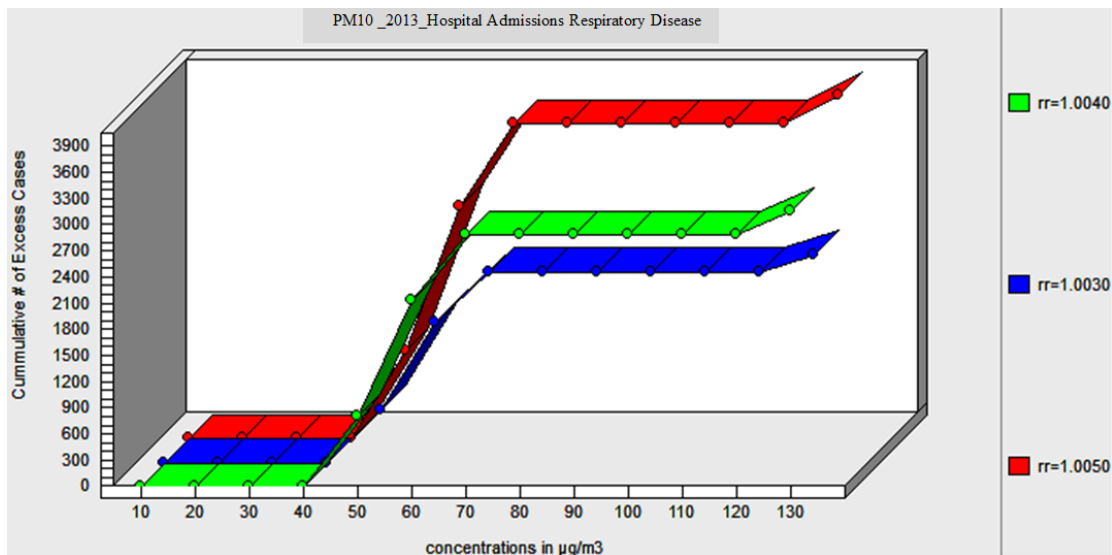
(a) Shebikah District



(b) Masfalah District



(c) Aziziyah District



(d) Awali District

Fig. 7 The number of hospital admissions due to respiratory diseases per 100,000 people

IV. CONCLUSIONS

The current study discussed PM_{10} concentrations in four locations with different activity in Makkah city, Saudi Arabia during the period from 1 Ramadan for the year 1434 AH - 27 Safar 1435 AH. It showed that levels were lower than PME standard ($340 \mu g/m^3$ as daily). The PM_{10} concentrations may be attributed to high traffic density, high density of population, and construction activities. While in Awali, low PM_{10} concentrations may be attributed to low population density.

Results showed that the inhalation dose and lung cancer risk as a result of exposure to PM_{10} concentrations during sampling period may be attributed to high density of pilgrims and buses that take them from the hotel to Al-Haram al-Sharif and the holy sites and return them again. While it lower in Awali location during sampling period, except during 8 and 9 Dhul-

Hijjah, due to a significant increase of the movement of pilgrims and buses bound for Arafat to perform Hajj.

Finally, Results of AirQ2.2.3 model predicted that the number of hospital admissions due to respiratory diseases as a result of exposure to concentrations of PM_{10} measured in the current study, to be the number of hospital admissions due to system diseases Respiratory in every 100,000 people were 1534 (18-3050 case) in every 100,000 people in all locations, which lower than that recorded in the United States (8970 cases per 100,000 people), in Malaysia (2003 in the case of every 100,000 people) but higher than has been recorded in China (1240 in the case of every 100,000 people). In addition, it shows that the response concentration factor (95% CI) was 0.53 (0.11-0.95%), 0.70 (0.33-1.06%), 0.68 (0.37-0.99%), 0.05 (0.06-0.04%) in Shebikah, Masfalalah, Aziziyah, and

Awali, respectively, per 10 $\mu\text{g}/\text{m}^3$ increase. These values were lower than that observed in Cairo, Egypt 4.1 (4 - 4.2) and in Tallinn - Estonia 1.14% (0.62-1.67), while it is higher than that observed in Shanghai, China 0.23 (0.03-0.48), in north China 0.036 (0.06 - 0.012).

ACKNOWLEDGMENT

This work is funded by Institute of Scientific Research and Revival of Islamic Culture, Umm Al-Qura University. We greatly appreciate their support. Thanks are also extended to all staff of The Custodian of the Two Holy Mosques Institute for Hajj and Umrah Research at Umm Al-Qura University, particularly to the staff of the Department of Environment and Health Research for their supports and cooperation's.

REFERENCES

- [1] Chow, J. C. J. G. Watson, E. M. Fujita, Z. Q. Lu, D. R. Lawson, D. H. Lowenthal, P. A. Solomon, K. L. Magliano, S. D. Ziman, and, L. W. Richards, "PM10 and PM2.5 Compositions in California's San Joaquin Valley," *Aerosol Sci. Tech.*, vol. 18, no. 2, pp. 105-128, 1993.
- [2] Chow, W. H.; McLaughlin, J. J.; Menck, H. R. and T. M. Mack, (1994). "Risk Factors for Extrahepatic Bile Duct Cancers: Los Angeles County, California (USA)," *Cancer Causes Control*, vol. 5, pp. 267-272, 1994.
- [3] US Environmental Protection Agency (USEPA). "National Air Pollutant Emission Trends, 1990-1994," 1995.
- [4] Kaiser, J. (2000). "Air Pollution-Panel Backs EPA and "Six Cities" Study," *Science*, vol. 289, no. 5480, pp. 711, 2000.
- [5] Pisoni, E. and M. Volta, "Modelling Pareto Efficient PM10 Control Policies in Northern Italy to Reduce Health Effects" *Atmos. Environ*, vol. 43, no. 20, pp. 3243-3248, 2009.
- [6] Charlson, R. J. (1992). "Climate Forcing by Anthropogenic Aerosols" *Science*, vol. 255, no. 5043, pp. 423-430, 1992.
- [7] National Research Council (NRC), "Protecting Visibility in National Parks and Wilderness Areas," National Academy Press, Washington, DC, 1993.
- [8] United States Environmental Protection Agency (USEPA), "Air Quality Criteria for Particulate Matter," US Environmental Protection Agency, Research Triangle Park, NC. US Environmental Protection Agency, Criteria Document on Fine Particles, EPA/600/P-95/001CF, Washington, DC, 1996.
- [9] Gard, E. E. et al. (1998). "Direct Observation of Heterogeneous Chemistry in the Atmosphere" *Science*, vol. 279, no. 5453, pp. 1184-1187, 1998.
- [10] Ali-Mohamed, A. Y. and A. H. Jaffar, "Estimation of Atmospheric Inorganic Water-Soluble Aerosols in the Western Region of Bahrain by Ion Chromatography," 2000.
- [11] Schwartz, J. D. Slater, T. V. Larson, W. E. Pierson, and J. Q. Koenig, "Particulate Air Pollution and Hospital Emergency Room Visits for Asthma in Seattle," *Am. Rev. Respir. Dis.*, vol. 147, pp. 826-831, 1993.
- [12] Hassan, S. K. M. (2006). "Atmospheric Polycyclic Aromatic Hydrocarbons and Some Heavy Metals in Suspended Particulate Matter in Urban, Industrial and Residential Areas in Greater Cairo. Ph.D," Thesis, Chemistry Department, Faculty of Science, Cairo University, Egypt, 2006.
- [13] World Health Organization (WHO). (2004). "Protection of the Human Environment, Assessing the Environmental Burden of Disease at National and Local Levels," Geneva, 2004.
- [14] Central Department of Statistics and Information (CDSI) (2010). Saudi Arabia, [www.cdsi.gov.sa/english/ChemicalBook\(CB\)](http://www.cdsi.gov.sa/english/ChemicalBook(CB)).
- [15] JIS (Japanese Industrial Standards) (1992): General Rule for Test Methods of Reagents, Japanese Industrial Standards Committee, Tokyo, Japan.
- [16] SES (Stirling Energy System) solar. 2008. SES Solar One Application for Certification: Volume 3. Appendix DD: Public Health and Safety Data. California energy commission. Bureau of Land Management. http://www.energy.ca.gov/sitingcases/solartwo/documents/applicant/afc/volume_02+03/MASTER_Appendix%20DD.pdf.
- [17] World Health Organization (WHO), "Air Quality Guidelines for Europe," Copenhagen: WHO Regional Office for Europe, 2010.
- [18] Makkah (2012). Available on: <http://wikimapia.org/5366059/Makkah>.
- [19] Health Statistical Year Book (HSYB) for Hajj 1432H. (2011). (Online). Available: <http://www.moh.gov.sa>.
- [20] Presidency of Meteorology and Environment (PME) Limitation. (2006). General Environment Executive and Regulations, 1427, Supplement (1) Environmental Protection Standards-For the Environment and the Regulations of Public Order in Saudi Arabia-Documents No. 1409-01.
- [21] Habibullah, T. M. (2011) Research Program for the Pilgrims Exposure to Air Pollutants in Makkah and the Holy Sites. "The Second Report" Part I: Size Distribution, Chemical and Mineral Composition of the Dust Outstanding (Anions-Cations-Metals) for the Pilgrimage Seasons 1426 and 1431. Custodian of the Two Holy Mosques Institute for Hajj Research and Umrah. Umm Al Qura University, Makkah, Saudi Arabia.
- [22] Wang X, Mauzerall DL. Evaluating Impacts of Air Pollution in China on Public Health: Implications for Future Air Pollution and Energy Policies. *Atmos Environ* 2006; 40: 1706-21. <http://dx.doi.org/10.1016/j.atmosenv.2005.10.066>.
- [23] USEPA (United States Environmental Protection Agency). The Benefits and Costs of the Clean Air Act, 1970-1990. EPA-410-R-97-002, United States Environmental Protection Agency Office of Air and Radiation Policy, 1997. (<http://www.epa.gov/airprog/oar/sect812/>, Accessed 11/02/2013).
- [24] Chen C, Chen D, Green C, Wu C. Benefits of Expanded Use of Natural Gas for Pollutant Reduction and Health Improvement in Shanghai. *Sino Sphere J.* 2002; 5(2): 58-64.
- [25] Afroz R, Hassan MN, Ibrahim NA. Review of Air Pollution and Health Impacts in Malaysia. *Environ Res* 2003; 92: 71-77. [http://dx.doi.org/10.1016/S0013-9351\(02\)00059-2](http://dx.doi.org/10.1016/S0013-9351(02)00059-2).
- [26] Fattore E, Paiano V, Borgini A, Tittarelli A, Bertoldi M, Crosignani P, Fanelli R. Human Health Risk in Relation to Air Quality in Two Municipalities in an Industrialized Area of Northern Italy. *Environ Res* 2011; 111: 1321-7. <http://dx.doi.org/10.1016/j.envres.2011.06.012>.
- [27] Orru H, Teinmaa E, Lai T, Tamm T, Kaasik M, Kimmel V, et al. Health Impact Assessment of Particulate Pollution in Tallinn Using Fine Spatial Resolution and Modeling Techniques. *Environ Health* 2009; 8: 7-15. <http://dx.doi.org/10.1186/1476-069X-8-7>.
- [28] Guo Y, Jia Y, Pan X, Liu L, Wichmann HE. The Association between Fine Particulate Air Pollution and Hospital Emergency Room Visits for Cardiovascular Diseases in Beijing, China. *Sci Total Environ* 2009; 407: 4826-30. <http://dx.doi.org/10.1016/j.scitotenv.2009.05.022>.
- [29] Guo Y, Tong S, Li S, Barnett AG, Yu W, Zhang Y. Gaseous Air Pollution and Emergency Hospital Visits for Hypertension in Beijing, China: A Time-Stratified Case Cross over Study. *Environ Health* 2010a; 9: 57-65. <http://dx.doi.org/10.1186/1476-069X-9-57>.
- [30] Guo Y, Tong S, Zhang Y, Barnett AG, Jia Y, Pan X. The Relationship between Particulate Air Pollution and Emergency Hospital Visits for Hypertension in Beijing, China. *Sci Total Environ* 2010b; 408: 4446-50. <http://dx.doi.org/10.1016/j.scitotenv.2010.06.042>.
- [31] Chen R, Pan G, Kan H, Tan J, Song W, Wu Z. Ambient Air Pollution and Daily Mortality in Anshan, China: A Times Stratified Case-Cross over Analysis. *Sci Total Environ* 2010; 408: 6086-91. <http://dx.doi.org/10.1016/j.scitotenv.2010.09.018>.
- [32] Shakour AA, El-Shahat MF, El-Taieb NM, Hassanein MA, Mohamed AMF. Health Impacts of Particulate Matter in Greater Cairo, Egypt. *J Am Sci* 2011; 7: 9-15.